



European Organisation for Astronomical Research in the Southern Hemisphere

**Programme:** VLT

**Project/WP:** Back-End Operations

# SPHERE IRDIS Imaging Reflex Tutorial

**Document Number:**

**Document Version:** 1.0

**Document Type:** Manual (MAN)

**Released On:**

**Document Classification:** Public

<b>Prepared by:</b>	Sabine Moehler
<b>Validated by:</b>	Wolfram Freudling
<b>Approved by:</b>	Martino Romaniello

<b>ESO</b>	<b>SPHERE IRDIS Imaging Reflex Tutorial</b>	Doc:	
		Issue:	Issue 1.4
		Date:	Date 2024-04-11
		Page:	2 of <a href="#">37</a>

**Authors**

Name	Affiliation
S. Moehler	ESO
Lars Kristian Lundin	ESO

This page was intentionally left blank

<b>ESO</b>	<b>SPHERE IRDIS Imaging Reflex Tutorial</b>	Doc:	
		Issue:	Issue 1.4
		Date:	Date 2024-04-11
		Page:	2 of <a href="#">37</a>

### Change record

Issue/Rev.	Date	Section/Parag. affected	Reason/Initiation/Documents/Remarks
1.0	31/01/2017	All	First public release
1.1	16/04/2018	Sect. 6.4	Updated information on limitations
1.2	03/05/2021	All	Updated common sections and added information on distortion map actor
1.3	27/06/2023	Sect. 6.4	Update information on limitations of distortion map actor
1.4	11/04/2024	Sect. 2	Update installation instructions

This page was intentionally left blank

<b>ESO</b>	<b>SPHERE IRDIS Imaging Reflex Tutorial</b>	Doc:	
		Issue:	Issue 1.4
		Date:	Date 2024-04-11
		Page:	4 of 37

## Contents

<b>1</b>	<b>Introduction to EsoReflex</b>	<b>7</b>
<b>2</b>	<b>Software Installation</b>	<b>8</b>
2.1	Installing Esoreflex workflows via macports . . . . .	8
2.2	Installing Esoreflex workflows via rpm/yum/dnf . . . . .	8
2.3	Installing Esoreflex workflows via install_esoreflex . . . . .	8
2.4	Demo Data . . . . .	9
<b>3</b>	<b>Quick Start: Reducing The Demo Data</b>	<b>10</b>
<b>4</b>	<b>About the main esoreflex canvas</b>	<b>14</b>
4.1	Saving And Loading Workflows . . . . .	14
4.2	Buttons . . . . .	14
4.3	Workflow States . . . . .	14
<b>5</b>	<b>The SPHERE Workflow</b>	<b>15</b>
5.1	Workflow Canvas Parameters . . . . .	15
5.2	Workflow Actors . . . . .	16
5.2.1	Simple Actors . . . . .	16
5.2.2	Composite Actors . . . . .	16
5.2.3	Recipe Execution within Composite Actors . . . . .	17
5.2.4	Lazy Mode . . . . .	20
<b>6</b>	<b>Reducing your own data</b>	<b>22</b>
6.1	The esoreflex command . . . . .	22
6.2	Launching the workflow . . . . .	22
6.3	Workflow Steps . . . . .	24
6.3.1	Data Organisation And Selection . . . . .	24
6.3.2	DataSetChooser . . . . .	26
6.3.3	The ProductExplorer . . . . .	26
6.3.4	Creation Of Master Calibration Files . . . . .	28

<b>ESO</b>	<b>SPHERE IRDIS Imaging Reflex Tutorial</b>	Doc:	
		Issue:	Issue 1.4
		Date:	Date 2024-04-11
		Page:	5 of 37

6.3.5	Science Reduction . . . . .	29
6.3.6	Output Organization . . . . .	29
6.4	Limitations, Non-default Parameters and Tips for Improvement . . . . .	30
<b>7</b>	<b>Frequently Asked Questions</b>	<b>32</b>
<b>8</b>	<b>Troubleshooting</b>	<b>35</b>

<b>ESO</b>	SPHERE IRDIS Imaging Reflex Tutorial	Doc:	
		Issue:	Issue 1.4
		Date:	Date 2024-04-11
		Page:	6 of <a href="#">37</a>



ESO	SPHERE IRDIS Imaging Reflex Tutorial	Doc:	
		Issue:	Issue 1.4
		Date:	Date 2024-04-11
		Page:	7 of 37

## 1 Introduction to ESOReflex

This document is a tutorial designed to enable the user to to reduce his/her data with the ESO pipeline run under an user-friendly environmet, called ESOReflex, concentrating on high-level issues such as data reduction quality and signal-to-noise (S/N) optimisation.

ESOReflex is the ESO Recipe Flexible Execution Workbench, an environment to run ESO VLT pipelines which employs a workflow engine to provide a real-time visual representation of a data reduction cascade, called a workflow, which can be easily understood by most astronomers. The basic philosophy and concepts of Reflex have been discussed by [Freudling et al. \(2013A&A...559A..96F\)](#). Please reference this article if you use Reflex in a scientific publication.

Reflex and the data reduction workflows have been developed by ESO and instrument consortia and they are fully supported. If you have any issue, please have a look to <https://support.eso.org> to see if this has been reported before or [open a ticket](#) for further support.

A workflow accepts science and calibration data, as downloaded from the archive using the CalSelector tool<sup>1</sup> (with associated raw calibrations) and organises them into DataSets, where each DataSet contains one science object observation (possibly consisting of several science files) and all associated raw and static calibrations required for a successful data reduction. The data organisation process is fully automatic, which is a major time-saving feature provided by the software. The DataSets selected by the user for reduction are fed to the workflow which executes the relevant pipeline recipes (or stages) in the correct order. Full control of the various recipe parameters is available within the workflow, and the workflow deals automatically with optional recipe inputs via built-in conditional branches. Additionally, the workflow stores the reduced final data products in a logically organised directory structure employing user-configurable file names.

The IRDIS Imaging Reflex workflow described in this tutorial supports the reduction of IRDIS imaging observations (CI, DBI, DPI). The user is referred to the SPHERE user manual ([Girard et al. 2016<sup>2</sup>](#)) for more information on the instrument itself, and the SPHERE pipeline user manual ([Möller-Nilson et al. 2016](#)) for the details of the IRDIS pipeline recipes. There are also other tutorials that guide you through the other SPHERE workflows, which can be found at the ESO pipeline main webpage (<http://www.eso.org/sci/software/pipelines/>).

The quick start section (see Section 3) describes the minimum effort to get started, and it makes up only two pages of text in this tutorial.

<sup>1</sup><https://www.eso.org/sci/archive/calselectorInfo.html>

<sup>2</sup>available at

<http://www.eso.org/sci/facilities/paranal/instruments/sphere/doc/>

ESO	SPHERE IRDIS Imaging Reflex Tutorial	Doc:	
		Issue:	Issue 1.4
		Date:	Date 2024-04-11
		Page:	8 of 37

## 2 Software Installation

`Esoflex` and the workflows can be installed in different ways: via package repositories, via the `install_esoflex` script or manually installing the software tar files.

The recommended way is to use the package repositories if your operating system is supported. The pipelines and Reflex can be installed from the ESO `macports` repositories that support macOS platforms, the and the `rpm/yum` repositories that support Fedora and CentOS platforms. For any other operating system it is recommended to use the `install_esoflex` script.

The installation from package repository requires administrative privileges (typically granted via `sudo`), as it installs files in system-wide directories under the control of the package manager. If you want a local installation, or you do not have `sudo` privileges, or if you want to manage different installations on different directories, then use the `install_esoflex` script. Note that the script installation requires that your system fulfill several software prerequisites, which might also need `sudo` privileges.

Reflex 2.11.x needs java JDK 11 to be installed.

Please note that in case of major or minor (affecting the first two digit numbers) Reflex upgrades, the user should erase the `$HOME/KeplerData`, `$HOME/.kepler` directories if present, to prevent possible aborts (i.e. a hard crash) of the `esoflex` process.

### 2.1 Installing `Esoflex` workflows via `macports`

This method is supported for the macOS operating system. It is assumed that `macports` (<https://www.macports.org>) is installed. Please read the full documentation at <https://www.eso.org/sci/software/pipelines/installation/macports.html>, which also describes the versions of macOS that are currently supported.

### 2.2 Installing `Esoflex` workflows via `rpm/yum/dnf`

This method is supported for Fedora and CentOS platforms and requires `sudo` rights. Please read the full documentation at <https://www.eso.org/sci/software/pipelines/installation/rpm.html>, which also describes the versions of Fedora and CentOS that are currently supported.

### 2.3 Installing `Esoflex` workflows via `install_esoflex`

This method is recommended for operating systems other than what indicated above, or if the user has no `sudo` rights. Software dependencies are not fulfilled by the installation script, therefore the user has to install all the prerequisites before running the installation script.

The software pre-requisites for Reflex 2.11 may be found at:  
[https://www.eso.org/sci/software/pipelines/reflex\\_workflows](https://www.eso.org/sci/software/pipelines/reflex_workflows)

To install the Reflex 2.11 software and demo data, please follow these instructions:

<b>ESO</b>	<b>SPHERE IRDIS Imaging Reflex Tutorial</b>	Doc:	
		Issue:	Issue 1.4
		Date:	Date 2024-04-11
		Page:	9 of 37

1. From any directory, download the installation script:

```
wget https://eso.org/sci/software/pipelines/install_esoreflex
```

2. Make the installation script executable:

```
chmod u+x install_esoreflex
```

3. Execute the installation script:

```
./install_esoreflex
```

and the script will ask you to specify three directories: the download directory `<download_dir>`, the software installation directory `<install_dir>`, and the directory to be used to store the demo data `<data_dir>`. If you do not specify these directories, then the installation script will create them in the current directory with default names.

4. Follow all the script instructions; you will be asked whether to use your Internet connection (recommended: yes), the pipelines and demo-datasets to install (note that the installation will remove all previously installed pipelines that are found in the same installation directory).
5. To start Reflex, issue the command:

```
<install_dir>/bin/esoreflex
```

It may also be desirable to set up an alias command for starting the Reflex software, using the shell command `alias`. Alternatively, the `PATH` variable can be updated to contain the `<install_dir>/bin` directory.

## 2.4 Demo Data

Together with the pipeline you will also receive a demo data set, that allows you to run the Reflex IRDIS Imaging workflow without any changes in parameters. This way you have a data set to experiment with before you start to work on your own data.

Note that you will need a minimum of ~0.7 GB, ~0.8 GB and ~9.3 GB of free disk space for the directories `<download_dir>`, `<install_dir>` and `<data_dir>`<sup>3</sup>, respectively. Processing all demo data will create ~6.5 GB of temporary products and ~3.5 GB of final products. The SPHERE demo data have been retrieved with the CalSelector tool<sup>4</sup>.

---

<sup>3</sup>The demo data contain data for all SPHERE observing modes.

<sup>4</sup><http://www.eso.org/sci/archive/calselectorInfo.html>

ESO	SPHERE IRDIS Imaging Reflex Tutorial	Doc:	
		Issue:	Issue 1.4
		Date:	Date 2024-04-11
		Page:	10 of 37

### 3 Quick Start: Reducing The Demo Data

For the user who is keen on starting reductions without being distracted by detailed documentation, we describe the steps to be performed to reduce the science data provided in the SPHERE demo data set supplied with the `esoreflex 2.11` release. By following these steps, the user should have enough information to perform a reduction of his/her own data without any further reading:

1. First, type:

```
esoreflex -l
```

If the `esoreflex` executable is not in your path, then you have to provide the command with the executable full path `<install_dir>/bin/esoreflex -l`. For convenience, we will drop the reference to `<install_dir>`. A list with the available `esoreflex` workflows will appear, showing the workflow names and their full path.

2. Open the IRDIS Imaging by typing:

```
esoreflex sphere_irdis_ci_dbi_dpi&
```

Alternatively, you can type only the command `esoreflex` the empty canvas will appear (Figure 3.1) and you can select the workflow to open by clicking on `File -> Open File`. Note that the loaded workflow will appear in a new window. The IRDIS Imaging workflow is shown in Figure 3.2.

3. To aid in the visual tracking of the reduction cascade, it is advisable to use component (or actor) highlighting. Click on `Tools -> Animate at Runtime`, enter the number of milliseconds representing the animation interval (100 ms is recommended), and click .
4. Change directories set-up. Under “Setup Directories” in the workflow canvas there are seven parameters that specify important directories (green dots).

By default, the `ROOT_DATA_DIR`, which specifies the working directory within which the other directories are organised, is set to your `$HOME/reflex_data` directory. All the temporary and final products of the reduction will be organized under sub-directories of `ROOT_DATA_DIR`, therefore make sure this parameter points to a location where there is enough disk space. To change `ROOT_DATA_DIR`, double click on it and a pop-up window will appear allowing you to modify the directory string, which you may either edit directly, or use the  button to select the directory from a file browser. When you have finished, click  to save your changes.

Changing the value of `RAW_DATA_DIR` is the only necessary modification if you want to process data other than the demo data

5. Click the  button to start the workflow
6. The workflow will highlight the `Data Organiser` actor which recursively scans the raw data directory (specified by the parameter `RAW_DATA_DIR` under “Setup Directories” in the workflow canvas) and constructs the datasets. Note that the raw and static calibration data must be present either

ESO	SPHERE IRDIS Imaging Reflex Tutorial	Doc:	
		Issue:	Issue 1.4
		Date:	Date 2024-04-11
		Page:	11 of 37

in `RAW_DATA_DIR` or in `CALIB_DATA_DIR`, otherwise datasets may be incomplete and cannot be processed. However, if the same reference file was downloaded twice to different places this creates a problem as `esoreflex` cannot decide which one to use.

7. The `Data Set Chooser` actor will be highlighted next and will display a “Select Datasets” window (see Figure 3.3) that lists the datasets along with the values of a selection of useful header keywords<sup>5</sup>. The first column consists of a set of tick boxes which allow the user to select the datasets to be processed. By default all complete datasets which have not yet been reduced will be selected. A full description of the options offered by the `Data Set Chooser` will be presented in Section 6.3.2.
8. Click the `Continue` button and watch the progress of the workflow by following the red highlighting of the actors. A window will show which dataset is currently being processed.
9. Once the reduction of all datasets has finished, a pop-up window called *Product Explorer* will appear, showing the datasets which have been reduced together with the list of final products. This actor allows the user to inspect the final data products, as well as to search and inspect the input data used to create any of the products of the workflow. Figure 3.4 shows the *Product Explorer* window. A full description of the *Product Explorer* will be presented in Section 6.3.3.
10. After the workflow has finished, all the products from all the datasets can be found in a directory under `END_PRODUCTS_DIR` named after the workflow start timestamp. Further subdirectories will be found with the name of each dataset.

Well done! You have successfully completed the quick start section and you should be able to use this knowledge to reduce your own data. However, there are many interesting features of `Reflex` and the `SPHERE` workflow that merit a look at the rest of this tutorial.



Figure 3.1: *The empty Reflex canvas.*

<sup>5</sup>The keywords listed can be changed by double clicking on the `DataOrganiser` Actor and editing the list of keywords in the second line of the pop-up window. Alternatively, instead of double-clicking, you can press the right mouse button on the `DataOrganiser` Actor and select `Configure Actor` to visualize the pop-up window.



ESO	SPHERE IRDIS Imaging Reflex Tutorial	Doc:	
		Issue:	Issue 1.4
		Date:	Date 2024-04-11
		Page:	13 of 37



Figure 3.4: The Product Explorer shows all datasets reduced in previous executions together with the full reduction chain for all the pipeline products.

ESO	SPHERE IRDIS Imaging Reflex Tutorial	Doc:	
		Issue:	Issue 1.4
		Date:	Date 2024-04-11
		Page:	14 of 37

## 4 About the main `esoreflex` canvas

### 4.1 Saving And Loading Workflows

In the course of your data reductions, it is likely that you will customise the workflow for various data sets, even if this simply consists of editing the `ROOT_DATA_DIR` to a different value for each data set. Whenever you modify a workflow in any way, you have the option of saving the modified version to an XML file using `File -> Export As` (which will also open a new workflow canvas corresponding to the saved file). The saved workflow may be opened in subsequent `esoreflex` sessions using `File -> Open`. Saving the workflow in the default Kepler format (`.kar`) is only advised if you do not plan to use the workflow with another computer.

### 4.2 Buttons

At the top of the `esoreflex` canvas are a set of buttons which have the following functions:

-  - Zoom in.
-  - Reset the zoom to 100%.
-  - Zoom the workflow to fit the current window size (Recommended).
-  - Zoom out.
-  - Run (or resume) the workflow.
-  - Pause the workflow execution.
-  - Stop the workflow execution.

The remainder of the buttons (not shown here) are not relevant to the workflow execution.

### 4.3 Workflow States

A workflow may only be in one of three states: executing, paused, or stopped. These states are indicated by the yellow highlighting of the , , and  buttons, respectively. A workflow is executed by clicking the  button. Subsequently the workflow and any running pipeline recipe may be stopped immediately by clicking the  button, or the workflow may be paused by clicking the  button which will allow the current actor/recipe to finish execution before the workflow is actually paused. After pausing, the workflow may be resumed by clicking the  button again.



ESO	SPHERE IRDIS Imaging Reflex Tutorial	Doc:	
		Issue:	Issue 1.4
		Date:	Date 2024-04-11
		Page:	15 of 37

## 5 The SPHERE Workflow

The SPHERE workflow canvas is organised into a number of areas. From top-left to top-right you will find general workflow instructions, directory parameters, and global parameters. In the middle row you will find five boxes describing the workflow general processing steps in order from left to right, and below this the workflow actors themselves are organised following the workflow general steps.

### 5.1 Workflow Canvas Parameters

The workflow canvas displays a number of parameters that may be set by the user. Under “Setup Directories” the user is only required to set the `RAW_DATA_DIR` to the working directory for the dataset(s) to be reduced, which, by default, is set to the directory containing the demo data. The `RAW_DATA_DIR` is recursively scanned by the `Data Organiser` actor for input raw data. The directory `CALIB_DATA_DIR`, which is by default within the pipeline installation directory, is also scanned by the `Data Organiser` actor to find any static calibrations that may be missing in your dataset(s). If required, the user may edit the directories `BOOKKEEPING_DIR`, `LOGS_DIR`, `TMP_PRODUCTS_DIR`, and `END_PRODUCTS_DIR`, which correspond to the directories where book-keeping files, logs, temporary products and end products are stored, respectively (see the Reflex User Manual for further details; [Forchi \(2012\)](#)).

There is a mode of the `Data Organiser` that skips the built-in data organisation and uses instead the data organisation provided by the `CalSelector` tool. To use this mode, click on `Use CalSelector associations` in the `Data Organiser` properties and make sure that the input data directory contains the XML file downloaded with the `CalSelector` archive request (note that this does not work for all instrument workflows).

Under the “Global Parameters” area of the workflow canvas, the user may set the `FITS_VIEWER` parameter to the command used for running his/her favourite application for inspecting FITS files. Currently this is set by default to `fv`, but other applications, such as `ds9`, `skycat` and `gaia` for example, may be useful for inspecting image data. Note that it is recommended to specify the full path to the visualization application (an alias will not work).

By default the `EraseDirs` parameter is set to `false`, which means that no directories are cleaned before executing the workflow, and the recipe actors will work in Lazy Mode (see Section 5.2.4), reusing the previous pipeline recipe outputs if input files and parameters are the same as for the previous execution, which saves considerable processing time. Sometimes it is desirable to set the `EraseDirs` parameter to `true`, which forces the workflow to recursively delete the contents of the directories specified by `BOOKKEEPING_DIR`, `LOGS_DIR`, and `TMP_PRODUCTS_DIR`. This is useful for keeping disk space usage to a minimum and will force the workflow to fully re-reduce the data each time the workflow is run.

The parameter `RecipeFailureMode` controls the behaviour in case that a recipe fails. If set to `Continue`, the workflow will trigger the next recipes as usual, but without the output of the failing recipe, which in most of the cases will lead to further failures of other recipes without the user actually being aware of it. This mode might be useful for unattended processing of large number of datasets. If set to `Ask`, a pop-up window will ask whether the workflow should stop or continue. This is the default. Alternatively, the `Stop` mode will stop the workflow execution immediately.

The parameter `ProductExplorerMode` controls whether the `ProductExplorer` actor will show its window or not. The possible values are `Enabled`, `Triggered`, and `Disabled`. `Enabled` opens the `Product-`



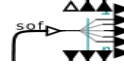


ESO	SPHERE IRDIS Imaging Reflex Tutorial	Doc:	
		Issue:	Issue 1.4
		Date:	Date 2024-04-11
		Page:	16 of 37

Explorer GUI at the end of the reduction of each individual dataset. `Triggered` (default and recommended) opens the `ProductExplorer` GUI when all the selected datasets have been reduced. `Disabled` does not display the `ProductExplorer` GUI.

## 5.2 Workflow Actors

### 5.2.1 Simple Actors



Simple actors have workflow symbols that consist of a single (rather than multiple) green-blue rectangle. They may also have an icon within the rectangle to aid in their identification. The following actors are simple actors:

- 
 - The `DataOrganiser` actor.
- 
 - The `DataSetChooser` actor (inside a composite actor).
- 
 - The `FitsRouter` actor Redirects files according to their categories.
- 
 - The `ProductRenamer` actor.
- 
 - The `ProductExplorer` actor (inside a composite actor).

Access to the parameters for a simple actor is achieved by right-clicking on the actor and selecting `Configure Actor`. This will open an “Edit parameters” window. Note that the `Product Renamer` actor is a jython script (Java implementation of the Python interpreter) meant to be customised by the user (by double-clicking on it).

### 5.2.2 Composite Actors

Composite Actors have workflow symbols that consist of multiple-layered green-blue rectangles. They generally do not have a icon within the rectangle. A Composite Actor represents a combination of more Simple or Composite Actors which hides over-complexity from the user in the top-level workflow. In the IRDIS Imaging workflow, the following actors are composite actors:

- 
 - The `Initialise` actor.
- 
 - The `Initialise Current DataSet` actor.

ESO	SPHERE IRDIS Imaging Reflex Tutorial	Doc:	
		Issue:	Issue 1.4
		Date:	Date 2024-04-11
		Page:	17 of 37

-  - The MasterDark actor.
-  - The InstrumentFlat actor.
-  - The StarCenter actor.
-  - The DistortionMap actor.
-  - The Science actor.
-  - The Close DataSet actor.

Composite Actors may also be expanded for inspection. To do this, right-click on the actor and select `Open Actor`, which will expand the Composite Actor components in a new Reflex canvas window. If the Composite Actor corresponds to a pipeline recipe, then the corresponding `RecipeExecutor` actor will be present as a Simple Actor, and its parameters are accessible as for any other Simple Actor. Alternatively you may still find Composite Actors, on which you need to repeat the first step to access the `Recipe Executor`.

### 5.2.3 Recipe Execution within Composite Actors

The IRDIS Imaging workflow contains Composite Actors to run pipeline recipes. This is in the most simple case due to the `SoF Splitter/SoF Accumulator`<sup>6</sup>, which enables the processing of calibration data from different settings within one given DataSet (e.g. dark frames taken with different DITs). More complex Composite Actors contain several actors (e.g. `Recipe Executor`).

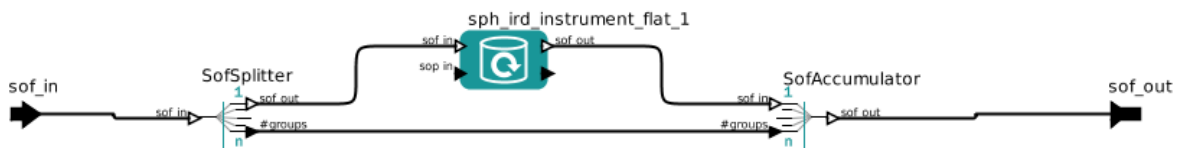


Figure 5.1: This is the window you get when you choose `Open Actor` for the Composite Actor `InstrumentFlat`. This is the most simple case for a Composite Actor. Using `Configure Actor` on `sph_ird_instrument_flat_1` gives you Fig. 5.2.

The central elements of any Reflex workflow are the `RecipeExecutor` actors that actually run the recipes. One basic way to embed a `RecipeExecutor` in a workflow is shown in Fig 5.1, which is the most simple

<sup>6</sup>SoF stands for Set of Frames, which is an ASCII file containing the name (and path) of each input file and its category (e.g. BIAS).

ESO	SPHERE IRDIS Imaging Reflex Tutorial	Doc:	
		Issue:	Issue 1.4
		Date:	Date 2024-04-11
		Page:	18 of 37

Table 5.1: The IRDIS Imaging workflow actors and their contents

actor	recipes	description
MasterDark	sph_ird_master_dark	create master dark
	sph_ird_sky_bg	create sky background background frame
	sph_ird_ins_bg	create instrument background frame
InstrumentFlat	sph_ird_instrument_flat	create master instrument flat field
StarCenter	sph_ird_star_center	determine the field centre to be used for derotation
DistortionMap	sph_ird_distortion_map	determine the optical distortion using a pinhole image
Science	sph_ird_science_dbi	reduce dual-band imaging science data
	sph_ird_science_imaging	reduce classical imaging science data
	sph_ird_science_dpi	reduce differential polarimetric imaging science data

version of a Composite Actor. The `RecipeExecutor` is preceded by an `SofSplitter`, and followed by an `SofAccumulator`. The function of the `SofSplitter` is to investigate the incoming SoFs, sort them by “purpose”, and create separate SoFs for each purpose. The `RecipeExecutor` then processes each of the SoFs independently (unless they are actually the same files). Finally, the `SofAccumulator` packs all the results into a single output SoF. The direct relation between the `SofSplitter` and `SofAccumulator` is used to communicate the number of different SoFs created by the `SofSplitter`. A workflow will only work as intended if the purpose of all the files a recipe needs as input is identical. The only exception to this rule is that a purpose can also be “default”. In this case, the file is included in any output SoF created by the `SofSplitter` and `SofAccumulator`.

The reason for this scheme is best explained by an example. For a complex `DataSet`, the `Data Organizer` might have selected a large number of individual raw dark frames. The different dark frames are to be used to calibrate different frames, e.g. the science frames and the flat field frames. The `Data Organizer` determines and records this “purpose” of each dark frame, and this information is included in the `DataSet` and each SoF created from this `DataSet`. The `FitsRouter` directs all raw dark frames to the `MasterDark` Composite Actor. The `SofSplitter` then creates SoFs, one for the dark frames to be used for the science frames, and (probably) separate ones for the dark frames to be used for the flat fields. The `sph_ird_master_dark` recipe creates one master dark (and other products) for each SoF, and the `SofAccumulator` then creates a SoF that contains all the products.

A `RecipeExecutor` actor is used in the workflow to run a single pipeline recipe (e.g. in the `InstrumentFlat` actor the recipe `sph_ird_instrument_flat` is executed). In order to configure the `RecipeExecutors`, one has to first use `Open Actor` to get to the level of the recipe executors (see Fig. 5.1).

In Figure 5.2 we show the “Edit parameters” window for a typical `RecipeExecutor` actor, which can be displayed by right-clicking on the actor and selecting `Configure Actor`. In the following we describe in more detail the function of some of the parameters for a `RecipeExecutor` actor:

- The “recipe” parameter states the pipeline recipe which will be executed.
- The “mode” parameter has a pull-down menu allowing the user to specify the execution mode of the actor.

ESO	SPHERE IRDIS Imaging Reflex Tutorial	Doc:	
		Issue:	Issue 1.4
		Date:	Date 2024-04-11
		Page:	19 of 37

Figure 5.2: The “Edit parameters” window for a typical RecipeExecutor actor, the `sph_ird_instrument_flat_1` actor which runs the `sph_ird_instrument_flat` pipeline recipe.

The available options are:

- Run: The pipeline recipe will be executed, possibly in Lazy Mode (see Section 5.2.4). This option is the default option.
  - Skip: The pipeline recipe is not executed, and the actor inputs are passed to the actor outputs.
  - Disabled: The pipeline recipe is not executed, and the actor inputs are not passed to the actor outputs.
- The “Lazy Mode” parameter has a tick-box (selected by default) which indicates whether the RecipeExecutor actor will run in Lazy Mode or not. A full description of Lazy Mode is provided in Sect. 5.2.4.
  - The “Recipe Failure Mode” parameter has a pull-down menu allowing the user to specify the behaviour of the actor if the pipeline recipe fails. The available options are:
    - Stop: The actor issues an error message and the workflow stops.
    - Continue: The actor creates an empty output and the workflow continues.

ESO	SPHERE IRDIS Imaging Reflex Tutorial	Doc:	
		Issue:	Issue 1.4
		Date:	Date 2024-04-11
		Page:	20 of 37

- Ask: The actor displays a pop-up window and asks the user whether he/she wants to continue or stop the workflow. This option is the default option.

To have all `Recipe Executors` use the global setting their internal “Recipe Failure Mode” should be set to `$RecipeFailureMode`.

- The set of parameters which start with “recipe param” and end with a number or a string correspond to the parameters of the relevant pipeline recipe. By default in the `RecipeExecutor` actor, the pipeline recipe parameters are set to their pipeline default values. If you need to change the default parameter value for any pipeline recipe, then this is where you should edit the value. For more information on the IRDIS pipeline recipe parameters, the user should refer to the SPHERE pipeline user manual (Möller-Nilson et al. 2016) or to the command line help available via `esorex --man <recipe name>`.

The description of the remainder of the `RecipeExecutor` actor parameters are outside the scope of this tutorial, and the interested user is referred to the Reflex User Manual for further details (Forchì 2012). Any changes that you make in the “Edit parameters” window must be saved in the workflow by clicking the `Commit` button when you have finished to have them used for processing.

#### 5.2.4 Lazy Mode

By default, all `RecipeExecutor` actors in a pipeline workflow are “Lazy Mode” enabled. This means that when the workflow attempts to execute such an actor, the actor will check whether the relevant pipeline recipe has already been executed with the same input files and with the same recipe parameters. If this is the case, then the actor will not execute the pipeline recipe, and instead it will simply broadcast the previously generated products to the output port. The purpose of the Lazy Mode is therefore to minimise any reprocessing of data by avoiding data re-reduction where it is not necessary.

One should note that the actor’s Lazy Mode depends on the contents of the directory specified by the parameter `BOOKKEEPING_DIR` and the relevant FITS file checksums. Any modification to the directory contents and/or the file checksums will cause the corresponding actor to run the pipeline recipe again when executed, thereby re-reducing the input data.

The re-reduction of data at each execution may sometimes be desirable. To force a re-reduction of data for any single `RecipeExecutor` actor in the workflow, right-click the actor, select `Configure Actor`, and uncheck the Lazy mode parameter tick-box in the “Edit parameters” window that is displayed. For many workflows the `RecipeExecutor` actors are actually found inside the composite actors in the top level workflow. To access such embedded `RecipeExecutor` actors you will first need to open the sub-workflow by right-clicking on the composite actor and then selecting `Open Actor`.

To force the re-reduction of all data in a workflow (i.e. to disable Lazy mode for the whole workflow), you must uncheck the Lazy mode for every single `RecipeExecutor` actor in the entire workflow. It is also possible to change the name of the bookkeeping directory, instead of modifying any of the Lazy mode parameters. This will also force a re-reduction of the given dataset(s). A new reduction will start (with the lazy mode still enabled), but the results of previous reduction will not be reused. Alternatively, if there is no need to keep any of the previously reduced data, one can simply set the `EraseDirs` parameter under the “Global Parameters” area of the workflow canvas to `true`. This will then remove all previous results that are stored in the bookkeeping, temporary, and log directories before processing the input data, in effect, starting a new clean data reduction

<b>ESO</b>	<b>SPHERE IRDIS Imaging Reflex Tutorial</b>	Doc:	
		Issue:	Issue 1.4
		Date:	Date 2024-04-11
		Page:	21 of <a href="#">37</a>

and re-processing every input dataset. *Note: The option `EraseDirs = true` does not work in esoreflex version 2.9.x and makes the workflow to crash.*

ESO	SPHERE IRDIS Imaging Reflex Tutorial	Doc:	
		Issue:	Issue 1.4
		Date:	Date 2024-04-11
		Page:	22 of 37

## 6 Reducing your own data

In this section we describe how to reduce your own data set.

First, we suggest the reader to familiarize with the workflow by reducing the demo dataset first (Section 3), but it is not a requirement.

### 6.1 The `esoreflex` command

We list here some options associated to the `esoreflex` command. We recommend to try them to familiarize with the system. In the following, we assume the `esoreflex` executable is in your path; if not you have to provide the full path `<install_dir>/bin/esoreflex`

To see the available options of the `esoreflex` command type:

```
esoreflex -h
```

The output is the following.

```
-h | -help          print this help message and exit.
-v | -version       show installed Reflex version and pipelines and exit.
-l | -list-workflows list available installed workflows and from
                    ~/KeplerData/workflows.
-n | -non-interactive enable non-interactive features.
-e | -explore        run only the Product Explorer in this workflow
-p <workflow> | -list-parameters <workflow>
                    lists the available parameters for the given
                    workflow.
-config <file>       allows to specify a custom esoreflex.rc configuration
                    file.
-create-config <file> if <file> is TRUE then a new configuration file is
                    created in ~/.esoreflex/esoreflex.rc. Alternatively
                    a configuration file name can be given to write to.
                    Any existing file is backed up to a file with a '.bak'
                    extension, or '.bakN' where N is an integer.
-debug              prints the environment and actual Reflex launch
                    command used.
```

### 6.2 Launching the workflow

We list here the recommended way to reduce your own datasets. Steps 1 and 2 are optional and one can start from step 3.

1. Type: `esoreflex -n <parameters> IRDIS Imaging` to launch the workflow non interactively and reduce all the datasets with default parameters.



ESO	SPHERE IRDIS Imaging Reflex Tutorial	Doc:	
		Issue:	Issue 1.4
		Date:	Date 2024-04-11
		Page:	23 of 37

<parameters> allows you to specify the workflow parameters, such as the location of your raw data and the final destination of the products.

For example, type (in a single command line):

```
esoreflex -n
  -RAW_DATA_DIR /home/user/my_raw_data
  -ROOT_DATA_DIR /home/user/my_reduction
  -END_PRODUCTS_DIR $ROOT_DATA_DIR/reflex_end_products
  sphere_irdis_ci_dbi_dpi
```

to reduce the complete datasets that are present in the directory /home/user/my\_raw\_data and that were not reduced before. Final products will be saved in /home/user/my\_reduction/reflex\_end\_products, while book keeping, temporary products, and logs will be saved in sub-directories of /home/user/my\_reduction/. If the reduction of a dataset fails, the reduction continues to the next dataset. It can take some time, depending on the number of datasets present in the input directory. For a full list of workflow parameters type `esoreflex -p IRDIS Imaging`. Note that this command lists only the parameters, but does not launch the workflow.

Once the reduction is completed, one can proceed with optimizing the results with the next steps.

## 2. Type:

```
esoreflex -e sphere_irdis_ci_dbi_dpi
```

to launch the Product Explorer. The Product Explorer allows you to inspect the data products already reduced by the IRDIS Imaging `esoreflex` workflow. Only products associated with the workflow default bookkeeping database are shown. To visualize products associated to given bookkeeping database, pass the full path via the `BOOKKEEPING_DB` parameter:

```
esoreflex -e BOOKKEEPING_DB <database_path> sphere_irdis_ci_dbi_dpi
```

to point the product explorer to a given <database\_path>, e.g., /home/username/reflex/reflex\_bookkeeping/test.db

The Product Explorer allows you to inspect the products while the reduction is running. Press the button Refresh to update the content of the Product Explorer. This step can be launched in parallel to step 1.


A full description of the Product Explorer will be given in Section 6.3.3

## 3. Type:

```
esoreflex sphere_irdis_ci_dbi_dpi &
```

to launch the IRDIS Imaging `esoreflex` workflow. The IRDIS Imaging workflow window will appear (Fig. 3.2). Please configure the set-up directories `ROOT_DATA_DIR`, `RAW_DATA_DIR`, and other workflow parameters as needed. Just double-click on them, edit the content, and press OK. Remember to specify the same <database\_path> as for the Product Explorer, if it has been opened at step #2, to synchronize the two processes.

4. (Recommended, but not mandatory) On the main `esoreflex` menu set `Tools -> Animate at Runtime` to 1 in order to highlight in red active actors during execution.

5. Press the button  to start the workflow. First, the workflow will highlight and execute the `Initialise` actor, which among other things will clear any previous reductions if required by the user (see Section 5.1).

ESO	SPHERE IRDIS Imaging Reflex Tutorial	Doc:	
		Issue:	Issue 1.4
		Date:	Date 2024-04-11
		Page:	24 of 37

Secondly, if set, the workflow will open the Product Explorer, allowing the user to inspect previously reduced datasets (see Section 6.3.3 for how to configure this option).

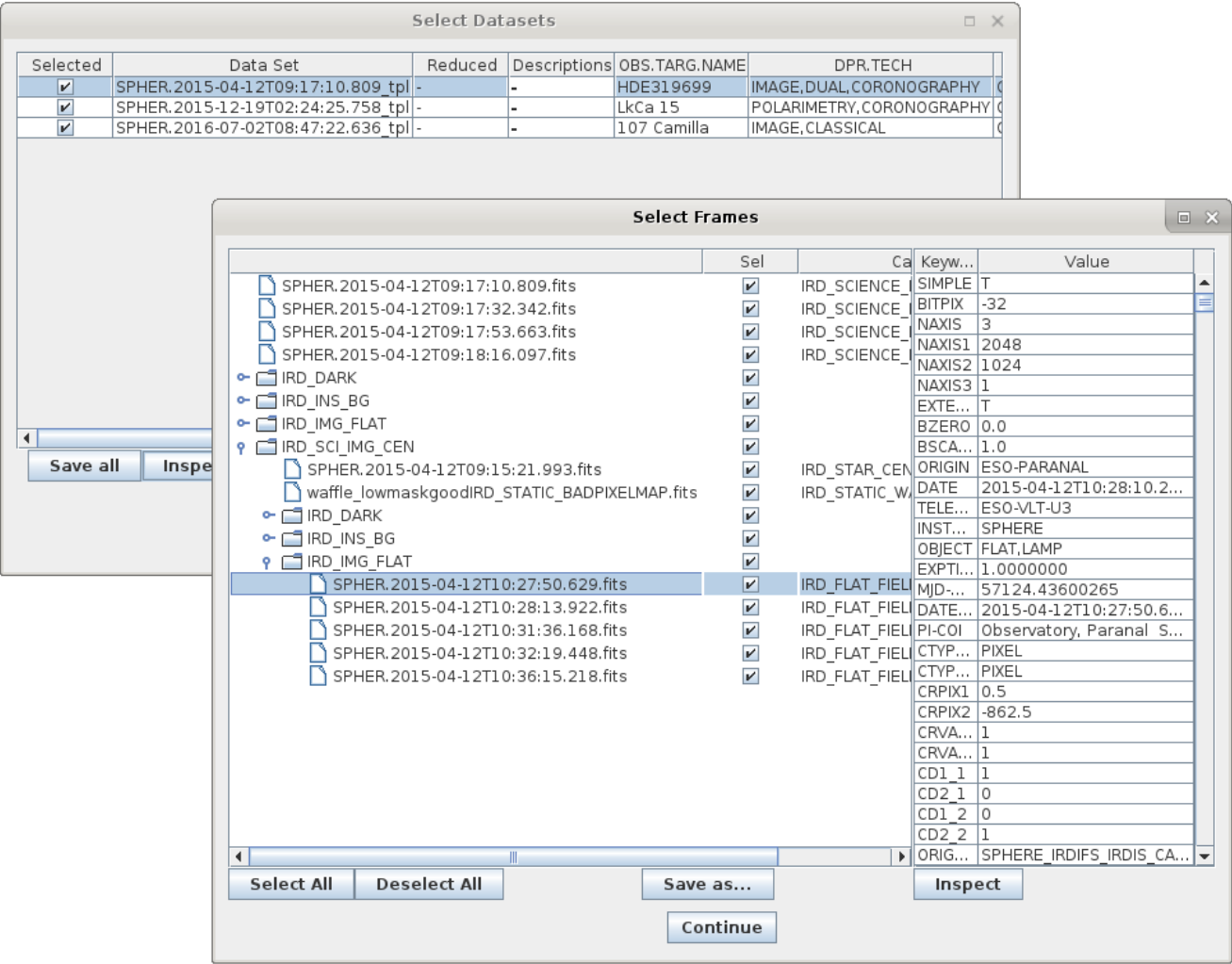


Figure 6.1: The “Select Frames” window with a single file from the current Data Set highlighted in blue, and the corresponding FITS header displayed in the text box on the right. Hidden partially behind the “Select Frames” window is the “Select DataSets” window with the currently selected DataSet highlighted in blue.

### 6.3 Workflow Steps

#### 6.3.1 Data Organisation And Selection

The DataOrganiser (DO) is the first crucial component of a Reflex workflow. The DO takes as input RAW\_DATA\_DIR and CALIB\_DATA\_DIR and it detects, classifies, and organises the files in these directories

ESO	SPHERE IRDIS Imaging Reflex Tutorial	Doc:	
		Issue:	Issue 1.4
		Date:	Date 2024-04-11
		Page:	25 of 37

and any subdirectories. The output of the DO is a list of “DataSets”. A DataSet is a special Set of Files (SoF). A DataSet contains one or several science (or calibration) files that should be processed together, and all files needed to process these data. This includes any calibration files, and in turn files that are needed to process these calibrations. Note that different DataSets might overlap, i.e. some files might be included in more than one DataSet (e.g., common calibration files).

A DataSet lists three different pieces of information for each of its files, namely 1) the file name (including the path), 2) the file category, and 3) a string that is called the “purpose” of the file. The DO uses the OCA<sup>7</sup> rules to find the files to include in a DataSet, as well as their categories and purposes. The file category identifies different types of files, and it is derived by information in the header of the file itself. A category could for example be RAW\_CALIBRATION\_1, RAW\_CALIBRATION\_2 or RAW\_SCIENCE, depending on the instrument. The purpose of a file identifies the reason why a file is included in a DataSet. The syntax is `action_1/action_2/action_3/ ... /action_n`, where each `action_i` describes an intended processing step for this file (for example, creation of a MASTER\_CALIBRATION\_1 or a MASTER\_CALIBRATION\_2). The actions are defined in the OCA rules and contain the recipe together with all file categories required to execute it (and predicted products in case of calibration data). For example, a workflow might include two actions `action_1` and `action_2`. The former creates MASTER\_CALIBRATION\_1 from RAW\_CALIBRATION\_1, and the later creates a MASTER\_CALIBRATION\_2 from RAW\_CALIBRATION\_2. The `action_2` action needs RAW\_CALIBRATION\_2 frames and the MASTER\_CALIBRATION\_1 as input. In this case, these RAW\_CALIBRATION\_1 files will have the purpose `action_1/action_2`. The same DataSet might also include RAW\_CALIBRATION\_1 with a different purpose; irrespective of their purpose the file category for all these biases will be RAW\_CALIBRATION\_1.

The Datasets created via the DataOrganiser will be displayed in the DataSet Chooser. Here the users have the possibility to inspect the various datasets and decide which one to reduce. By default, DataSets that have not been reduced before are highlighted for reduction. Click either  in order to continue with the workflow reduction, or  in order to stop the workflow. A full description of the DataSet Chooser is presented in Section 6.3.2.

Once the  is pressed, the workflow starts to reduce the first selected DataSet. Files are broadcasted according to their purpose to the relevant actors for processing.

The categories and purposes of raw files are set by the DO, whereas the categories and purpose of products generated by recipes are set by the RecipeExecuter. The file categories are used by the FitsRouter to send files to particular processing steps or branches of the workflow (see below). The purpose is used by the SofSplitter and SofAccumulator to generate input SoFs for the RecipeExecuter. The SofSplitter and SofAccumulator accept several SoFs as simultaneous input. The SofAccumulator creates a single output SoF from the inputs, whereas the SofSplitter creates a separate output SoF for each purpose.

---

<sup>7</sup>OCA stands for OrganisationClassificationAssociation and refers to rules, which allow to classify the raw data according to the contents of the header keywords, organise them in appropriate groups for processing, and associate the required calibration data for processing. They can be found in the directory `<install_dir>/share/esopipes/<pipeline-version>/reflex/`, carrying the extension `.oca`. The variable `<install_dir>` depends on the operative system and installation procedure. For installation through rpm: `<install_dir>=/usr`; for installation through macport `<install_dir>=/opt/local`; for installation through the installation script `install_esoreflex` it depends on the path specified during installation, e.g. `<install_dir>=<specified_path>/install`

ESO	SPHERE IRDIS Imaging Reflex Tutorial	Doc:	
		Issue:	Issue 1.4
		Date:	Date 2024-04-11
		Page:	26 of 37

### 6.3.2 DataSetChooser

The `DataSetChooser` displays the `DataSets` available in the “Select Data Sets” window, activating vertical and horizontal scroll bars if necessary (Fig. 3.3).

Some properties of the `DataSets` are displayed: the name, the number of files, a flag indicating if it has been successfully reduced (a green OK), if the reduction attempts have failed or were aborted (a red FAILED), or if it is a new dataset (a black "-"). The column "Descriptions" lists user-provided descriptions (see below), other columns indicate the instrument set-up and a link to the night log.

Sometimes you will want to reduce a subset of these `DataSets` rather than all `DataSets`, and for this you may individually select (or de-select) `DataSets` for processing using the tick boxes in the first column, and the buttons `Deselect All` and `Select Complete` at the bottom, or configure the “Filter” field at the bottom left. Available filter options are: "New" (datasets not previously reduced will be selected), "Reduced" (datasets previously reduced will be selected), "All" (all datasets will be selected), and "Failed" (dataset with a failed or aborted reduction will be selected).

You may also highlight a single `DataSet` in blue by clicking on the relevant line. If you subsequently click on `Inspect Highlighted`, then a “Select Frames” window will appear that lists the set of files that make up the highlighted `DataSet` including the full filename<sup>8</sup>, the file category (derived from the FITS header), and a selection tick box in the right column. The tick boxes allow you to edit the set of files in the `DataSet` which is useful if it is known that a certain calibration frame is of poor quality (e.g: a poor raw flat-field frame). The list of files in the `DataSet` may also be saved to disk as an ASCII file by clicking on `Save As` and using the file browser that appears.

By clicking on the line corresponding to a particular file in the “Select Frames” window, the file will be highlighted in blue, and the file FITS header will be displayed in the text box on the right, allowing a quick inspection of useful header keywords. If you then click on `Inspect`, the workflow will open the file in the selected FITS viewer application defined by the workflow parameter `FITS_VIEWER`.

To exit from the “Select Frames” window, click `Continue`.

To add a description of the reduction, press the button `...` associated with the field "Add description to the current execution of the workflow" at the bottom right of the Select Dataset Window; a pop up window will appear. Enter the desired description (e.g. "My first reduction attempt") and then press `OK`. In this way, all the datasets reduced in this execution, will be flagged with the input description. Description flags can be visualized in the `SelectFrames` window and in the `ProductExplorer`, and they can be used to identify different reduction strategies.

To exit from the “Select DataSets” window, click either `Continue` in order to continue with the workflow reduction, or `Stop` in order to stop the workflow.

### 6.3.3 The ProductExplorer

The `ProductExplorer` is an interactive component in the `esoreflex` workflow whose main purpose is to list the final products with the associated reduction tree for each dataset and for each reduction attempt (see Fig. 3.4).

<sup>8</sup>keep the mouse pointer on the file name to visualize the full path name.

ESO	SPHERE IRDIS Imaging Reflex Tutorial	Doc:	
		Issue:	Issue 1.4
		Date:	Date 2024-04-11
		Page:	27 of 37

### *Configuring the ProductExplorer*

You can configure the ProductExplorer GUI to appear after or before the data reduction. In the latter case you can inspect products as reduction goes on.

1. To display the ProductExplorer GUI at the end of the data reduction:

- Click on the global parameter “ProductExplorerMode” before starting the data reduction. A configuration window will appear allowing you to set the execution mode of the Product Explorer. Valid options are:
  - "Triggered" (default). This option opens the ProductExplorer GUI when all the selected datasets have been reduced.
  - "Enabled". This option opens the ProductExplorer GUI at the end of the reduction of each individual dataset.
  - “Disable”. This option does not display the ProductExplorer GUI.
- Press the  button to start the workflow.

2. To display the ProductExplorer GUI “before” starting the data reduction:

- double click on the composite Actor "Inspect previously reduced data". A configuration window will appear. Set to "Yes" the field "Inspect previously reduced data (Yes/No)". Modify the field "Continue reduction after having inspected the previously reduced data? (Continue/Stop/Ask)". "Continue" will continue the workflow and trigger the DataOrganizer. "Stop" will stop the workflow; "Ask" will prompt another window deferring the decision whether continuing or not the reduction after having closed the Product Explorer.
- Press the  button to start the workflow. Now the ProductExplorer GUI will appear before starting the data organization and reduction.

### *Exploring the data reduction products*

The left window of the ProductExplorer GUI shows the executions for all the datasets (see Fig. 3.4). Once you click on a dataset, you get the list of reduction attempts. Green and red flags identify successful or unsuccessful reductions. Each reduction is linked to the “Description” tag assigned in the “Select Dataset” window.

1. To identify the desired reduction run via the “Description” tag, proceed as follows:

- Click on the symbol at the left of the dataset name. The full list of reduction attempts for that dataset will be listed. The column Exec indicates if the reduction was successful (green flag: "OK") or not (red flag: "Failed").
- Click on the entries in the field "Description" to visualize the description you have entered associated to that dataset on the Select Dataset window when reducing the data.

ESO	SPHERE IRDIS Imaging Reflex Tutorial	Doc:	
		Issue:	Issue 1.4
		Date:	Date 2024-04-11
		Page:	28 of 37

- Identify the desired reduction run. All the products are listed in the central window, and they are organized following the data reduction cascade.

You can narrow down the range of datasets to search by configuring the field "Show" at the top-left side of the ProductExplorer (options are: "All", "Successful", "Unsuccessful"), and specifying the time range (Last, all, From-to).

2. To inspect the desired file, proceed as follows:

- Navigate through the data reduction cascade in the ProductExplorer by clicking on the files.
- Select the file to be inspected and click with the mouse right-hand button. The available options are:
  - Options available always:
    - \* Copy full path. It copies the full name of the file onto the clipboard. Shift+Ctrl+v to past it into a terminal.
    - \* Inspect Generic. It opens the file with the fits viewer selected in the main workflow canvas.
    - \* Inspect with. It opens the file with an executable that can be specified (you have to provide the full path to the executable).
  - Options available for files in the TMP\_PRODUCTS\_DIR directory only:
    - \* command line. Copy of the environment configuration and recipe call used to generate that file.
    - \* Xterm. It opens an Xterm at the directory containing the file.
  - Options available for products associated to interactive windows only:
    - \* Display pipeline results. It opens the interactive windows associated to the recipe call that generated the file. Note that this is for visualization purposes only; the recipe parameters cannot be changed and the recipe cannot be re-run from this window.

### 6.3.4 Creation Of Master Calibration Files

In this step of the workflow, the following IRDIS recipes are executed in the order listed below. Please refer to the SPHERE pipeline user manual ([Möller-Nilson et al. 2016](#)) for the details of each recipe and the algorithms employed:

1. The MasterDark actor will execute the pipeline recipes `sph_ird_master_dark`, `sph_ird_ins_bg`, and `sph_ird_sky_bg` (as appropriate for the input data) in order to create combined master dark, instrument background, and sky background frames, respectively, from the set of corresponding raw frames. The science recipes have a built-in logic with respect to the use of dark/background frames if several are present:
  - (a) If a `IRD_SKY_BG_FIT` is available, this one is chosen.
  - (b) Else if a `IRD_SKY_BG` is available, this one is chosen.
  - (c) Else if an `IRD_INS_BG_FIT` is available, this one is chosen.

ESO	SPHERE IRDIS Imaging Reflex Tutorial	Doc:	
		Issue:	Issue 1.4
		Date:	Date 2024-04-11
		Page:	29 of 37

- (d) Else if an `IRD_INS_BG` is available, this one is chosen.
- (e) Else if a `IRD_MASTER_DARK` is available, this one is chosen.
- (f) Else an error will be thrown and execution terminated."

As the products `IRD_SKY_BG_FIT` and `IRD_INS_BG_FIT` do not describe the underlying data well they are not provided for processing.

2. The `InstrumentFlat` actor will execute the pipeline recipe `sph_ird_instrument_flat` in order to create a combined master flat frame from the set of raw flat frames
3. The `StarCenter` actor will execute the pipeline recipe `sph_ird_star_center` in order to determine the position of the central target.
4. The `DistortionMap` actor will execute the pipeline recipe `sph_ird_distortion_map` in order to determine the optical distortion using a pinhole image.

### 6.3.5 Science Reduction

The `Science` actor will execute the IRDIS pipeline recipes `sph_ird_science_dbi` or `sph_ird_science_dpi` depending on the input raw data<sup>9</sup>. Please refer to the SPHERE pipeline user manual (Möller-Nilson et al. 2016) for the details of these recipes.

### 6.3.6 Output Organization

After having processed the input data for a `DataSet`, the workflow highlights and executes the `Product Renamer` actor, which, by default, will copy the defined final products of the `Science` actor to the directory specified by `END_PRODUCTS_DIR` and rename them with names derived from the values of certain FITS header keywords. Specifically, final products are renamed by default with names of the form `<HIERARCH.ESO.OBS.NAME>_<HIERARCH.ESO.PRO.CATG>.fits`, with `<HIERARCH.ESO.OBS.NAME>` and `<HIERARCH.ESO.PRO.CATG>` representing the values of the corresponding FITS header keywords (`<HIERARCH.ESO.OBS.NAME>` is the name of the OB and `<HIERARCH.ESO.PRO.CATG>` is the category of the product file). These names are fully configurable by right-clicking on the `Product Renamer` actor, selecting `Configure Actor`, and then editing the string as appropriate. In some cases the keyword `<HIERARCH.ESO.OBS.TARG.NAME>` (target name) may be more useful than `<HIERARCH.ESO.OBS.NAME>`.

The following actors in this step of the workflow are concerned with the termination of the data flow for the current `DataSet` and will be highlighted briefly as they are executing.

Finally, the `Product Explorer` window will appear as shown in Fig. 3.4 with a list of datasets on the left menu. By unfolding the menu under each dataset, all the renamed products appear, and if one is interested in the files, including all intermediate steps, that are used to produce that final product, just click on it and a dependency tree will show the whole reduction chain.

<sup>9</sup>The recipe `sph_ird_science_imaging` is not used as it does not handle pupil-stabilized observations and provides the same results per “arm” for field-stabilized data as `sph_ird_science_dbi`.



ESO	SPHERE IRDIS Imaging Reflex Tutorial	Doc:	
		Issue:	Issue 1.4
		Date:	Date 2024-04-11
		Page:	30 of 37

## 6.4 Limitations, Non-default Parameters and Tips for Improvement

### Limitations

Below we provide a list of known limitations of the pipeline as it was delivered to ESO in October 2016:

**sph\_ird\_ins\_bg** This recipe processes instrumental background data that were observed with an open shutter and the same instrument components as used for the science data. It also fits the instrument background, but the result is currently bad and therefore not used for processing.

**sph\_ird\_sky\_bg** This recipe processes sky background data taken at night, immediately before or after the object observations. They are the preferred correction as they record the conditions as seen by the object. One should however verify that indeed blank sky was observed (and not for instance some region with molecular clouds that provide their own structure). The fit to the sky background is again bad and therefore not used for processing.

**sph\_ird\_distortion\_map** The recipe determines the distortion of IRDIS imaging data using internal calibration data observed with a pinhole mask. It allows the user also to determine the offset between the LEFT and RIGHT image (`ird.distortion_map.align_right = TRUE`). However, applying the distortion correction to astrometric observations does not improve the correction beyond what is achieved by a correction of the anamorphism only. In some cases the correction even worsens the data. Therefore, the processing of internal distortion data is disabled by default. If you wish to enable it you need to follow the steps described in Sect. 5.2.3 to change the mode from `Disabled` to `Run` (see also Fig. 5.2).

**sph\_ird\_science\_imaging** This recipe is not used by the workflow, as it does not handle pupil-stabilized observations and provides the same results per “arm” for field-stabilized data as `sph_ird_science_dbi`. Only the final combination of the two arms is handled differently. As the alignment of the frames is often not sufficiently precise for a good combination the workflow does not provide these final products.

### Non-default Parameters

When implementing this workflow we set in some cases recipe parameters different from the defaults. This is usually done because the colleagues at SPHERE Data Center<sup>10</sup>, who reduce the SPHERE GTO IRDIS and IFS data, found those value more appropriate. One should keep in mind, however, that they optimized the IRDIS imaging parameters for the NIRSUR survey, which is optimized for planet searches and uses the spectral differential imaging (SDI) procedure (Racine et al. 1999).

**sph\_ird\_master\_dark** These data record only the detector dark current. The `IRD_MASTER_DARK` will be used for science processing only if neither `IRD_INS_BG` nor `IRD_SKY_BG` are available. To have also bad pixel maps `ird.master_dark.save_addprod` is set to `true`.

**sph\_ird\_instrument\_flat** Instead of the defaults values of 0.1 and 10 for `ird.instrument_flat.badpix_lowtolerance` and `ird.instrument_flat.badpix_uptolerance`, respectively, we use 0.75 and 1.25. For *K*-band data the DC recommends to set `ird.instrument_flat.badpix_uptolerance` to 1.5.

<sup>10</sup><http://sphere.osug.fr/spip.php?rubrique16&lang=en>



ESO	SPHERE IRDIS Imaging Reflex Tutorial	Doc:	
		Issue:	Issue 1.4
		Date:	Date 2024-04-11
		Page:	31 of 37

The `IRD_FLAT_FIELD` includes an extension with the bad pixels identified by this recipe as well as those available from the `IRD_STATIC_BADPIXELMAP` created by `sph_ird_master_dark`. For recipes using the `IRD_FLAT_FIELD` the `IRD_STATIC_BADPIXELMAP` should therefore not be provided separately.

**sph\_ird\_distortion\_map** Although third-order polynomials seem to fit the internal distortion data better, astrometric data are better corrected with linear fits. Therefore the recipe parameter `ird.distortion_map.fitting_order` is set to 1 instead of the default value of 3.

**sph\_ird\_star\_center** This recipe uses a mask to limit the search for the waffle spots to the region where they are expected. The distance of the waffle spots from the star increases linearly with wavelength. The mask should accomodate the full wavelength range of SPHERE data from  $0.9\mu\text{m}$  to  $2.5\mu\text{m}$ .

**sph\_ird\_science\_dbi** This recipe is used to process both CI and DBI data. The workflow is set to keep all intermediate products (`ird.science_dbi.save_interprod` set to `true`), which are useful for further analysis, as well as the stacked products per “arm” (`ird.science_dbi.save_addprod` set to `true`).

## Improving Your Results

Below we list some possibilities how to improve your results: ([Racine et al. 1999](#)).

**Demo Data** You will see dark regions in the products for `SPHER.2015-12-19T02:24:25.758_tpl` (DPI). These are caused by sources in the SKY frames used to correct the background. By deselecting the action `IRD_SKY_BG` you can improve the results.

**sph\_ird\_master\_dark** If you think that too few bad pixels are found try changing `ird.master_dark.sigma_clip` from 5 (default) to 3. For *K*-band data with long exposure times `ird.master_dark.max_acceptable` should be increased from 1000 (default) to 1600 (32 sec) and 3500 (64 sec).

**sph\_ird\_star\_center** For *K*-band data the detection of the waffle spots is difficult due to the high background. Setting `ird.star_center.sigma` to 100 may be helpful. Alternatively one can try to remove the background manually before processing the data.

The parameters are set to detect waffle spots. If you want to process data taken without a coronagraph you should change the following parameters:

`ird.star_center.use_waffle` to `false`

`ird.star_center.sigma` to 500 (the stars are usually extremely bright).

**sph\_ird\_science\_dbi** Both ADI and SDI are switched off (default). If you want to use SDI the DC recommends to set `ird.science_dbi.minr` and `ird.science_dbi.maxr` to 20 and 70, respectively (defaults are 4 and 40). These values are for  $\lambda = 1.6\mu\text{m}$  and should be scaled linearly with  $\lambda$ .

ESO	SPHERE IRDIS Imaging Reflex Tutorial	Doc:	
		Issue:	Issue 1.4
		Date:	Date 2024-04-11
		Page:	32 of 37

## 7 Frequently Asked Questions

- **The error window fills the whole screen - how can I get to the `Continue`/`Stop` buttons?**

Press the `Alt` key together with your left mouse button to move the window upwards and to the left. At the bottom the `Continue`/`Stop` buttons will be visible. This bug is known but could not yet be fixed.

- **I tried to Open (or Configure) an Actor while the workflow is running and now it does not react any more. What should I do?**

This is a limitation of the underlying Kepler engine. The only way out is to kill the workflow externally. If you want to change anything while a workflow is running you first need to pause it.

- **After a successful reduction of a data set, I changed this data set in some way (e.g. modified or removed some files, or changed the rules of the Data Organizer). When I restart Reflex, the Data Set Chooser correctly displays my new data set, but marks it as “reduced ok”, even though it was never reduced before. What does this mean?**

The labels in the column “Reduced” of the Data Set Chooser mark each dataset with “OK”, “Failed” or “-”. These labels indicate whether a data set has previously successfully been reduced at least once, all previous reductions failed, or a reduction has never been tried respectively. Data sets are identified by their name, which is derived from the first science file within the data set. As long as the data set name is preserved (i.e. the first science file in a data set has not changed), the Data Organizer will consider it to be the same data set. The Data Organizer recognizes any previous reductions of data sets it considers to be the same as the current one, and labels the current data set with “OK” if any of them was successful, even if the previously reduced data set differs from the current one.

Note that the Product Explorer will list all the previous reductions of a particular data set only at the end of the reduction. This list might include successful and/or unsuccessful reduction runs with different parameters, or in your case with different input files. The important fact is that these are all reductions of data sets with the same first raw science file. By browsing through all reductions of a particular raw science file, the users can choose the one they want to use.

- **Where are my intermediate pipeline products?** Intermediate pipeline products are stored in the directory `<TMP_PRODUCTS_DIR>` (defined on the workflow canvas, under Setup Directories) and organised further in directories by pipeline recipe.
- **Can I use different sets of bias frames to calibrate my flat frames and science data?** Yes. In fact this is what is currently implemented in the workflow(s). Each file in a DataSet has a purpose attached to it (Forchi (2012)). It is this purpose that is used by the workflow to send the correct set of bias frames to the recipes for flat frame combination and science frame reduction, which may or may not be the same set of bias frames in each case.

- **Can I run Reflex from the command line?** Yes, use the command:

```
esoreflex -n <workflow_path>/<workflow>.xml
```

The `-n` option will set all the different options for Kepler and the workflows to avoid opening any GUI elements (including pipeline interactive windows).

It is possible to specify workflow variables (those that appear in the workflow canvas) in the command line. For instance, the raw data directory can be set with this command:

ESO	SPHERE IRDIS Imaging Reflex Tutorial	Doc:	
		Issue:	Issue 1.4
		Date:	Date 2024-04-11
		Page:	33 of 37

```
esoreflex -n -RAW_DATA_DIR <raw_data_path> \
          <workflow_path>/<workflow>.xml
```

You can see all the command line options with the command `esoreflex -h`.

Note that this mode is not fully supported, and the user should be aware that the path to the workflow must be absolute and even if no GUI elements are shown, it still requires a connection to the window manager.

- **How can I add new actors to an existing workflow?** You can drag and drop the actors in the menu on the left of the Reflex canvas. Under `Eso-reflex -> Workflow` you may find all the actors relevant for pipeline workflows, with the exception of the recipe executer. This actor must be manually instantiated using `Tools -> Instantiate Component`. Fill in the “Class name” field with `org.eso.RecipeExecuter` and in the pop-up window choose the required recipe from the pull-down menu. To connect the ports of the actor, click on the source port, holding down the left mouse button, and release the mouse button over the destination port. Please consult the Reflex User Manual ([Forchi \(2012\)](#)) for more information.
- **How can I broadcast a result to different subsequent actors?** If the output port is a multi-port (filled in white), then you may have several relations from the port. However, if the port is a single port (filled in black), then you may use the black diamond from the toolbar. Make a relation from the output port to the diamond. Then make relations from the input ports to the diamond. Please note that you cannot click to start a relation from the diamond itself. Please consult the Reflex User Manual ([Forchi \(2012\)](#)) for more information.
- **How can I manually run the recipes executed by Reflex?** If a user wants to re-run a recipe on the command line he/she has to go to the appropriate `reflex_book_keeping` directory, which is generally `reflex_book_keeping/<workflow>/<recipe_name>_<number>`. There, subdirectories exist with the time stamp of the recipe execution (e.g. `2013-01-25T12:33:53.926/`). If the user wants to re-execute the most recent processing he/she should go to the `latest` directory and then execute the script `cmdline.sh`. Alternatively, to use a customized `esorex` command the user can execute

```
ESOREX_CONFIG="INSTALL_DIR/etc/esorex.rc"
PATH_TO/esorex --recipe-config=<recipe>.rc <recipe> data.sof
```

where `INSTALL_DIR` is the directory where Reflex and the pipelines were installed.

If a user wants to re-execute on the command line a recipe that used a specific raw frame, the way to find the proper `data.sof` in the bookkeeping directory is via `grep <raw_file> */data.sof`. Afterwards the procedure is the same as before.

If a recipe is re-executed with the command explained above, the products will appear in the directory from which the recipe is called, and not in the `reflex_tmp_products` or `reflex_end_products` directory, and they will not be renamed. This does not happen if you use the `cmdline.sh` script.

- **Can I reuse the bookkeeping directory created by previous versions of the pipeline?**

In general no. In principle, it could be reused if no major changes were made to the pipeline. However there are situations in which a previously created bookkeeping directory will cause problems due to pipeline versions incompatibility. This is especially true if the parameters of the pipeline recipes have changed. In that case, please remove the bookkeeping directory completely.

ESO	SPHERE IRDIS Imaging Reflex Tutorial	Doc:	
		Issue:	Issue 1.4
		Date:	Date 2024-04-11
		Page:	34 of 37

- **How to insert negative values into a textbox?**

Due to a bug in wxPython, the GUI might appear to freeze when attempting to enter a negative number in a parameter's value textbox. This can be worked around by navigating away to a different control in the GUI with a mouse click, and then navigating back to the original textbox. Once focus is back on the original textbox the contents should be selected and it should be possible to replace it with a valid value, by typing it in and pressing the enter key.

- **I've updated my Reflex installation and when I run esoreflex the process aborts. How can I fix this problem?**

As indicated in Section 2, in case of major or minor (affecting the first two digit numbers) Reflex upgrades, the user should erase the `$HOME/KeplerData`, `$HOME/.kepler` directories if present, to prevent possible aborts (i.e. a hard crash) of the esoreflex process.

- **How can include my analysis scripts and algorithms into the workflow?**

EsoReflex is capable of executing any user-provided script, if properly interfaced. The most convenient way to do it is through the Python actor. Please consult the tutorial on how to insert Python scripts into a workflow available here: [www.eso.org/sci/data-processing/Python\\_and\\_esoreflex.pdf](http://www.eso.org/sci/data-processing/Python_and_esoreflex.pdf)

ESO	SPHERE IRDIS Imaging Reflex Tutorial	Doc:	
		Issue:	Issue 1.4
		Date:	Date 2024-04-11
		Page:	35 of 37

## 8 Troubleshooting



Figure 8.1: *TheDataOrganizer* interactive window reports an error “:No DataSets have been created, check the data set and the OCA rules.”.

1. **The DataOrganizer fails with the error message “:No DataSets have been created, check the data set and the OCA rules.”(see Figure 8.1.)**

This error may be due to the fact that the data provided by the ESO archive are compressed (`<filename>.fits.Z`). Please remember to uncompress the data before running the workflow in Reflex.

Also, please remember that the IRDIS IMG workflow supports only IRDIS imaging data (CI/DBI/DPI). It is possible that your data consists entirely of other observations, in which case the Data Organizer actor will not construct any DataSets, showing the above error message.

2. **The “Select DataSets” window displays my DataSets, but some/all of them are greyed out. What is going on?**

If a DataSet in the “Select DataSets” window is greyed out, then it means that this DataSet is missing some key calibration(s) (i.e. the DataSet is incomplete). To find out which calibration(s) are missing from a greyed out DataSet, click on the DataSet in question to highlight it in blue, and then click on the button `Inspect Highlighted`. The “Select Frames” window that appears will report the category of each missing calibration product (e.g. `IRD_MASTER_DARK`). From this the user then has to determine the missing raw data (in this case dark frames). If static calibrations are missing the mechanism unfortunately does not work, but such data should be found automatically by reflex in `<install_directory>/calib/<pipeline_version>/cal`

<b>ESO</b>	<b>SPHERE IRDIS Imaging Reflex Tutorial</b>	Doc:	
		Issue:	Issue 1.4
		Date:	Date 2024-04-11
		Page:	36 of <a href="#">37</a>

## Acknowledgements

We thank Philippe Delorme from the SPHERE Data Center for his very valuable help and advice. The `Reflex` team in alphabetical order consists of Pascal Ballester, Lodovico Coccato, Vincenzo Forchì, Wolfram Freudling, César Enrique García, Maurice Klein Gebbinck, Martino Romaniello, and Artur Szostak.

<b>ESO</b>	<b>SPHERE IRDIS Imaging Reflex Tutorial</b>	Doc:	
		Issue:	Issue 1.4
		Date:	Date 2024-04-11
		Page:	37 of 37

Forchì V., 2012, Reflex User Manual, VLT-MAN-ESO-19000-5037, Issue 0.7,  
<https://ftp.eso.org/pub/dfs/reflex/ReflexUserManual-3.1.pdf> 15, 20, 32, 33

Girard J. et al., SPHERE User Manual, VLT-MAN-SPH-14690-0430\_v97\_2016-01-12 7

Möller-Nilson O. et al., SPHERE Pipeline User Manual  
<https://ftp.eso.org/pub/dfs/pipelines/sphere/spher-pipeline-manual-1.18.pdf> 7, 20, 28, 29

Racine R. et al., 1999, PASP 111, 587 30, 31