



EUROPEAN SOUTHERN OBSERVATORY

Organisation Européenne pour des Recherches Astronomiques dans l'Hémisphère Austral

Europäische Organisation für astronomische Forschung in der südlichen Hemisphäre

VERY LARGE TELESCOPE

VISIR Pipeline User Manual

VLT-MAN-ESO-19500-3852

Issue 1.2

Date 21st January 2008

Prepared: L.K.Lundin 21st January 2008
Name Date Signature

Approved: P.Ballester
Name Date Signature

Released: M. Peron
Name Date Signature

No content on this page

ESO	VISIR Pipeline User Manual	Doc:	VLT-MAN-ESO-19500-3852
		Issue:	Issue 1.2
		Date:	Date 21st January 2008
		Page:	3 of 77

Change record

Issue/Rev.	Date	Section/Parag. affected	Reason/Initiation/Documents/Remarks
1.0	1st February 2006	All	For VISIR pipeline 1.3.7
1.1	1st October 2007	All	For VISIR pipeline 2.0.0
1.2	21st January 2008	All	For VISIR pipeline 3.0.0

No content on this page

ESO	VISIR Pipeline User Manual	Doc:	VLT-MAN-ESO-19500-3852
		Issue:	Issue 1.2
		Date:	Date 21st January 2008
		Page:	5 of 77

Contents

1	Introduction	11
1.1	Purpose	11
1.2	Acknowledgements	11
1.3	Scope	11
1.4	Reference Documents and Applicable Documents	11
2	Overview	13
3	VISIR Instrument Description	14
3.1	Instrument overview	14
4	Quick start	16
4.1	VISIR pipeline recipes	16
4.2	An introduction to Gasgano and EsoRex	16
4.2.1	Using Gasgano	17
4.2.2	Using EsoRex	18
5	Known Problems	25
6	Instrument Data Description	26
6.1	General Data Layout	26
6.2	General frames	27
6.3	Imaging frames	27
6.4	Spectroscopy frames	28
7	Static Calibration Data	30
7.1	Imaging Standard Stars	30
7.2	Spectroscopy Standard Stars	30
7.3	Spectrometer Detector Quantum Efficiency	30
7.4	Atmospheric Emission Spectrum	31
8	Data Reduction	32

ESO	VISIR Pipeline User Manual	Doc:	VLT-MAN-ESO-19500-3852
		Issue:	Issue 1.2
		Date:	Date 21st January 2008
		Page:	6 of 77

8.1	Reduction Cascade	32
8.2	VISIR pipeline recipes	32
8.3	Unsupported Observation Modes	33
9	Pipeline Recipe Interfaces	34
9.1	visir_img_ff	34
9.1.1	Input files for visir_img_ff	34
9.1.2	Input Parameters for visir_img_ff	34
9.1.3	Products from visir_img_ff	35
9.1.4	QC Parameters from visir_img_ff	35
9.2	visir_img_combine	35
9.2.1	Input files for visir_img_combine	35
9.2.2	Input Parameters for visir_img_combine	36
9.2.3	Products from visir_img_combine	38
9.2.4	QC Parameters from visir_img_combine	39
9.3	visir_img_phot	39
9.3.1	Input files for visir_img_phot	39
9.3.2	Input Parameters for visir_img_phot	40
9.3.3	Products from visir_img_phot	40
9.3.4	QC Parameters from visir_img_phot	40
9.4	visir_img_dark	41
9.4.1	Input files for visir_img_dark	41
9.4.2	Input Parameters for visir_img_dark	41
9.4.3	Products from visir_img_dark	41
9.4.4	QC Parameters from visir_img_dark	42
9.5	visir_img_trans	42
9.5.1	Input files for visir_img_trans	42
9.5.2	Input Parameters for visir_img_trans	43
9.5.3	Products from visir_img_trans	43
9.5.4	QC Parameters from visir_img_trans	43
9.6	visir_spc_wcal	43

ESO	VISIR Pipeline User Manual	Doc:	VLT-MAN-ESO-19500-3852
		Issue:	Issue 1.2
		Date:	Date 21st January 2008
		Page:	7 of 77

9.6.1	Input files for visir_spc_wcal	43
9.6.2	Input Parameters for visir_spc_wcal	43
9.6.3	Products from visir_spc_wcal	44
9.6.4	QC Parameters from visir_spc_wcal	44
9.7	visir_spc_obs	45
9.7.1	Input files for visir_spc_obs	45
9.7.2	Input Parameters for visir_spc_obs	45
9.7.3	Products from visir_spc_obs	45
9.7.4	QC Parameters from visir_spc_obs	46
9.8	visir_spc_phot	46
9.8.1	Input files for visir_spc_phot	46
9.8.2	Input Parameters for visir_spc_phot	46
9.8.3	Products from visir_spc_phot	46
9.8.4	QC Parameters from visir_spc_phot	47
9.9	visir_spc_wcal_ech	47
9.9.1	Input files for visir_spc_wcal_ech	47
9.9.2	Input Parameters for visir_spc_wcal_ech	47
9.9.3	Products from visir_spc_wcal_ech	48
9.9.4	QC Parameters from visir_spc_wcal_ech	48
9.10	visir_spc_obs_ech	48
9.10.1	Input files for visir_spc_obs_ech	48
9.10.2	Input Parameters for visir_spc_obs_ech	49
9.10.3	Products from visir_spc_obs_ech	49
9.10.4	QC Parameters from visir_spc_obs_ech	49
9.11	visir_spc_phot_ech	49
9.11.1	Input files for visir_spc_phot_ech	49
9.11.2	Input Parameters for visir_spc_phot_ech	50
9.11.3	Products from visir_spc_phot_ech	50
9.11.4	QC Parameters from visir_spc_phot_ech	50
9.12	Product Description	51

ESO	VISIR Pipeline User Manual	Doc:	VLT-MAN-ESO-19500-3852
		Issue:	Issue 1.2
		Date:	Date 21st January 2008
		Page:	8 of 77

9.12.1	Combined Image	51
9.12.2	Contribution Map	51
9.12.3	Spectroscopic Weight Map	51
9.12.4	Spectroscopic Table for Wavelength Calibration	51
9.12.5	Spectroscopic Tables for Science Observation	52
9.12.6	Spectroscopic Tables for Photometric Calibration	52
10	Algorithms	53
10.1	General Algorithms	53
10.1.1	Bad pixel detection and cleaning	53
10.1.2	Distortion correction	53
10.1.3	Creation of nodedded images	53
10.1.4	Combination of nodedded images	54
10.1.5	Wavelength Calibration	54
10.1.6	Spectrum Extraction	55
10.1.7	Spectral Photometric Calibration	55
10.1.8	Imaging Photometric Calibration	56
10.1.9	Computation of Strehl Ratio	57
10.2	Recipe Algorithms	57
10.2.1	visir_img_ff	57
10.2.2	visir_img_dark	58
10.2.3	visir_img_combine	58
10.2.4	visir_img_phot	58
10.2.5	visir_spc_wcal	58
10.2.6	visir_spc_obs	58
10.2.7	visir_spc_phot	59
10.2.8	visir_spc_wcal_ech	59
10.2.9	visir_spc_obs_ech	59
10.2.10	visir_spc_phot_ech	59
A	Installation	65

ESO	VISIR Pipeline User Manual	Doc:	VLT-MAN-ESO-19500-3852
		Issue:	Issue 1.2
		Date:	Date 21st January 2008
		Page:	9 of 77

A.1	Supported platforms	65
A.2	Building the VISIR pipeline	65
A.2.1	Requirements	66
A.2.2	Compiling and installing the VISIR pipeline	66
B	QC Parameters	68

ESO	VISIR Pipeline User Manual	Doc:	VLT-MAN-ESO-19500-3852
		Issue:	Issue 1.2
		Date:	Date 21st January 2008
		Page:	10 of 77

ESO	VISIR Pipeline User Manual	Doc:	VLT-MAN-ESO-19500-3852
		Issue:	Issue 1.2
		Date:	Date 21st January 2008
		Page:	11 of 77

1 Introduction

1.1 Purpose

The VISIR pipeline is a subsystem of the *VLT Data Flow System* (DFS). It is used in two operational environments, for the *ESO Data Flow Operations* (DFO), and for the *Paranal Science Operations* (PSO), in the quick-look assessment of data, in the generation of master calibration data, in the reduction of scientific exposures, and in the data quality control. Additionally, the VISIR pipeline recipes are made public to the user community, to allow a more personalised processing of the data from the instrument. The purpose of this document is to describe a typical VISIR data reduction sequence with the VISIR pipeline.

This manual is a complete description of the data reduction recipes used by the VISIR pipeline, reflecting the status of the VISIR pipeline as of 21st January 2008 (version 3.0.0).

1.2 Acknowledgements

We want to thank Eric Pantin, CEA and Ralf Siebenmorgen for providing valuable ideas for improving the pipeline recipes. We thank also Yves Jung, who played a major role in the development of the first version of the pipeline. The feedback we received in numerous discussions with our “beta-testers”, VISIR Instrument Scientists Alain Smette and Stephane Brilliant, and VISIR Quality Control Scientist Danuta Dobrzycka was very much appreciated.

1.3 Scope

This document describes the VISIR pipeline used at ESO-Garching and ESO-Paranal for the purpose of data assessment and data quality control.

Updated versions of the present document may be found on [17]. For general information about the current instrument pipelines status we remind the user of [7]. Quality control information are at [6].

Additional information on QFITS, the Common Pipeline Library (CPL) and ESOREX can be found respectively at [12], [15]. The Gasgano tool is described in [16]. A description of the instrument is in [8]. The VISIR instrument user manual is in [9] while results of Science Verifications (SV) are at [3].

1.4 Reference Documents and Applicable Documents

ESO	VISIR Pipeline User Manual	Doc:	VLT-MAN-ESO-19500-3852
		Issue:	Issue 1.2
		Date:	Date 21st January 2008
		Page:	12 of 77

- [1] ESO. *Parameters for setting the VISIR Spectrometer*. VLT-TRE-VIS-14321-5046.
- [2] ESO. *VISIR Calibration Plan*. VLT-PLA-VIS-14300-0009.
- [3] ESO, <http://www.eso.org/science/vltsv/visirsv/>. *VISIR Science Verification home page*. 11
- [4] ESO. *VLT Data Flow System Specifications for Pipeline and Quality Control*. VLT-SPE-ESO-19600-1233.
- [5] ESO/DMO. *ESO DICB – Data Interface Control Document*. GEN-SPE-ESO-19400-0794 (3.0). 27, 28, 29
- [6] ESO/DMO/DFO, <http://www.eso.org/observing/dfo/quality/>. *ESO-Data Flow Operation home page*. 11
- [7] ESO/DMO/DFO, <http://www.eso.org/observing/dfo/quality/pipeline-status.html>. *VISIR Pipeline Current Status*. 11
- [8] ESO/INS, <http://www.eso.org/instruments/visir/>. *VISIR instrument home page*. 11
- [9] ESO/INS, <http://www.eso.org/instruments/visir/doc/>. *VISIR instrument home page*. 11, 14, 30, 31, 53
- [10] ESO/SDD/DFS, <http://www.eso.org/observing/cpl/download.html>. *Common Pipeline Library Reference Manual*. VLT-ESO-MAN-19500-2721.
- [11] ESO/SDD/DFS, <http://www.eso.org/observing/cpl/download.html>. *Common Pipeline Library User Manual*. VLT-MAN-ESO-19500-2720.
- [12] ESO/SDD/DFS, <http://www.eso.org/cpl>. *CPL home page*. 11, 53, 57
- [13] ESO/SDD/DFS. *Deliverables Specification*. VLT-SPE-ESO-19000-1618 (2.0).
- [14] ESO/SDD/DFS. *DFS Pipeline & Quality Control – User Manual*. VLT-MAN-ESO-19500-1619.
- [15] ESO/SDD/DFS, <http://www.eso.org/cpl/esorex.html>. *ESOREX home page*. 11
- [16] ESO/SDD/DFS, <http://www.eso.org/gasgano/>. *Gasgano User's Manual*. VLT-PRO-ESO-19000-1932. 11
- [17] ESO/SDD/DFS, <http://www.eso.org/pipelines>. *VISIR Pipeline Web Page*. 11
- [18] Rio Y. et al. *VISIR: A mid infrared imager and spectrometer for the VLT*, spie vol. 2475, pp. 286-295, orlando edition, April 1995. VLT-TRE-VIS-14321-5046.
- [19] Rio Y. et al. *VISIR: The mid infrared imager and spectrometer for the VLT*, spie vol. 3354, pp. 615-626, kona, hawaii edition, March 1998.
- [20] P.-O. Lagage. *The final design of VISIR, the mid-infrared imager and spectrometer for the VLT*.
- [21] P.-O. Lagage et al. *Result of the phase A study for the VLT Mid-infrared instrument: VISIR*, the eso messenger no. 80, pp. 13-16 edition, June 1995.
- [22] P.-O. Lagage et al. *VISIR at PDR*, the (eso) messenger, no. 91, pp. 17-21 edition, March 1998.

ESO	VISIR Pipeline User Manual	Doc:	VLT-MAN-ESO-19500-3852
		Issue:	Issue 1.2
		Date:	Date 21st January 2008
		Page:	13 of 77

2 Overview

In collaboration with instrument consortia, the Data Flow Systems Department (DFS) of the Data Management and Operation Division is implementing data reduction pipelines for the most commonly used VLT/VLTI instrument modes. These data reduction pipelines have the following three main purposes:

Data quality control: pipelines are used to produce the quantitative information necessary to monitor instrument performance.

Master calibration product creation: pipelines are used to produce master calibration products (*e.g.*, combined bias frames, super-flats, wavelength dispersion solutions).

Science product creation: using pipeline-generated master calibration products, science products are produced for the supported instrument modes (*e.g.*, combined ISAAC jitter stacks; bias-corrected, flat-fielded FORS images, wavelength-calibrated UVES spectra). The accuracy of the science products is limited by the quality of the available master calibration products and by the algorithmic implementation of the pipelines themselves. In particular, adopted automatic reduction strategies may not be suitable or optimal for every scientific goal.

Instrument pipelines consist of a set of data processing modules that can be called from the command line, from the automatic data management tools available on Paranal or from Gasgano.

ESO offers two front-end applications for launching pipeline recipes, *Gasgano* [6] and *EsoRex*, both included in the pipeline distribution (see Appendix A on page 65). These applications can also be downloaded separately from <http://www.eso.org/gasgano> and <http://www.eso.org/cpl/esorex.html>. An illustrated introduction to Gasgano is provided in the "Quick Start" section 4 on page 16.

The VISIR instrument and the different types of VISIR raw frames and auxiliary data are described in sections 3 on the following page, 6 on page 26, and 7 on page 30.

A brief introduction to the usage of the available reduction recipes using Gasgano or EsoRex is presented in section 4 on page 16. In section 5 on page 25 we advice the user about known data reduction problems providing also possible solutions.

An overview of the data reduction, what are the input data, and the recipes is provided in section 8 on page 32.

More details on what are inputs, products, quality control measured quantities, and controlling parameters of each recipe is given in section 9 on page 34.

More detailed descriptions of the data reduction algorithms used by the individual pipeline recipes can be found in section 10 on page 53.

In appendix A on page 65 the installation of the VISIR pipeline recipes is given.

ESO	VISIR Pipeline User Manual	Doc:	VLT-MAN-ESO-19500-3852
		Issue:	Issue 1.2
		Date:	Date 21st January 2008
		Page:	14 of 77

3 VISIR Instrument Description

This section provides a brief description of the VISIR instrument.

A more complete documentation can be found in the VISIR User Manual, downloadable from <http://www.eso.org/instruments/visir/doc>

VISIR has been developed under ESO contract by CEA/DAPNIA/SAP and NFRA/ASTRON. The instrument has been made available to the community and started operations in Paranal in April 2005.

3.1 Instrument overview

The VISIR instrument is located at the Cassegrain focus of UT3 of the VLT at Paranal. It provides diffraction-limited imaging in the two mid infrared (MIR) atmospheric windows: the N band between 8 to $13\mu m$ and the Q band between 16.5 and $24.5\mu m$, respectively.

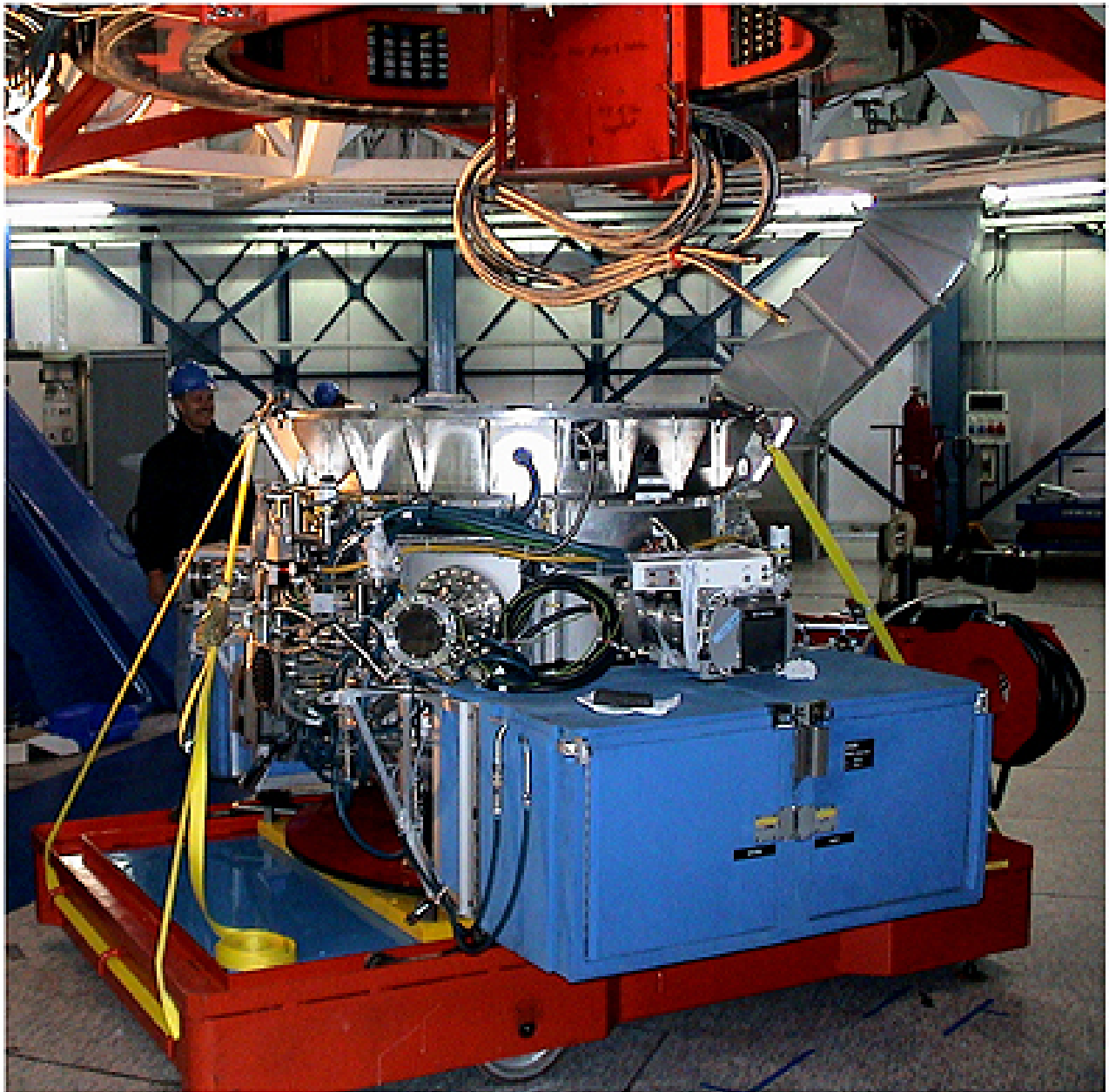
It also features a spectrometer offering long-slit spectroscopy at low resolution (down to 150) in the N band, medium resolution in the N and Q band and high resolution (up to 30000) for a limited set of wavelengths, as well as cross-dispersed high resolution spectroscopy over most of the N and Q band.

Because of the very high background from the ambient atmosphere and telescope, the sensitivity of ground-based MIR instruments cannot compete with that of space-borne ones. However, ground based instruments mounted on large telescopes offer superior spatial resolution. For example VISIR at the VLT provides diffraction limited images at $\sim 0.3''$ (FWHM) in the N band. This is an order of magnitude better than what can be reached by the Spitzer Space Telescope (SST).

The VISIR imager and spectrometer are each equipped with a DRS (former Boing) 256x256 BIB detector. The quantum efficiency of the detectors reaches close to 70% in the N-band and has a sharp absorption feature at $8.8\mu m$. See also 7.3 on page 30.

For a description of the VISIR instrument, please see [9]. *Parameters for setting the VISIR Spectrometer* (VLT-TRE-VIS-14321-5046) contains more information about the VISIR spectrometer.

ESO	VISIR Pipeline User Manual	Doc:	VLT-MAN-ESO-19500-3852
		Issue:	Issue 1.2
		Date:	Date 21st January 2008
		Page:	15 of 77



VISIR under the Cassegrain Focus of the 8.2-m VLT Melipal Telescope

ESO PR Photo 16a/04 (12 May 2004)

© European Southern Observatory



Figure 3.1.1: *VISIR under the Cassegrain Focus of the 8.2m VLT Melipal Telescope.*

ESO	VISIR Pipeline User Manual	Doc:	VLT-MAN-ESO-19500-3852
		Issue:	Issue 1.2
		Date:	Date 21st January 2008
		Page:	16 of 77

4 Quick start

This section describes the most immediate usage of the VISIR pipeline recipes.

4.1 VISIR pipeline recipes

For reduction of science and calibration data, the current VISIR pipeline offers a set of 11 stand-alone recipes:

visir_img_ff creates a flat field and a bad pixel image from a sequence of flat fields at different exposure levels in both imaging and spectroscopy.

visir_img_dark creates a dark image and maps of hot, cold and deviant pixels from a sequence of dark exposures in both imaging and spectroscopy.

visir_img_combine combines a stack of jittered science exposures into a single image and an additional contribution map.

visir_img_phot uses images of a photometric standard star in a given filter and corresponding flux listed in a catalogue to determine the conversion factor, i.e. the ratio between the number of integrated detector counts per second from the star and the astrophysical source flux. The photometric sensitivity is determined as well.

visir_img_trans creates a table of filter transmissions in imaging.

visir_spc_wcal estimates the dispersion relation using the atmospheric spectrum in a long-slit spectroscopy half-cycle frame.

visir_spc_obs wavelength calibration as **visir_spc_wcal** followed by spectrum extraction from a combined image.

visir_spc_phot uses images of a spectrophotometric standard star in a given spectroscopic setting and corresponding flux listed in a catalogue to determine the conversion factor per step in wavelength. The spectrophotometric sensitivity is determined as well.

visir_spc_wcal_ech same as **visir_spc_wcal**, but intended for the spectrometer echelle instead of the long slit.

visir_spc_obs_ech same as **visir_spc_obs**, but intended for the spectrometer echelle instead of the long slit.

visir_spc_phot_ech same as **visir_spc_phot**, but intended for the spectrometer echelle instead of the long slit.

4.2 An introduction to Gasgano and EsoRex

Before being able to call pipeline recipes on a set of data, the data must be properly classified, and associated with the appropriate calibrations. The *Data Classification* consists of tasks such as: "What kind of data am I?", e.g., FLAT, "to which group do I belong?", e.g., to a particular Observation Block or template. *Data Association* is the process of selecting appropriate calibration data for the reduction of a set of raw science frames. Typically, a set of frames can be associated if they share a number of properties, such as instrument and

ESO	VISIR Pipeline User Manual	Doc:	VLT-MAN-ESO-19500-3852
		Issue:	Issue 1.2
		Date:	Date 21st January 2008
		Page:	17 of 77

detector configuration. As all the required information is stored in the FITS headers, data association is based on a set of keywords (called "association keywords") and is specific to each type of calibration¹.

The process of data classification and association is known as data organisation. The *DO Category* is the label assigned to a data type as a result of data classification.

An instrument pipeline consists of a set of data processing modules that can be called from different host applications, either from the command line with *Esorex*, from the automatic data management tools available at Paranal, or from the graphical *Gasgano* tool.

Gasgano is a data management tool that simplifies the data organisation process, offering automatic data classification and making the data association easier (*even if automatic association of frames is not yet provided*). *Gasgano* determines the classification of a file by applying an instrument specific rule, while users must provide this information to the recipes when they are executed manually using *Esorex* from the command line. In addition, *Gasgano* allows the user to execute directly the pipeline recipes on a set of selected files.

4.2.1 Using Gasgano

To get familiar with the VISIR pipeline recipes and their usage, it is advisable to begin with *Gasgano*, because it provides a complete graphic interface for data browsing, classification and association, and offers several other utilities such as easy access to recipes documentation and preferred data display tools.

Gasgano can be started from the Command Line Interface in the following way:

```
gasgano &
```

Figure 4.2.1 on the following page shows the *Gasgano* main window with the 4 VISIR calibration files automatically loaded, which is the configuration of the publicly available version 3.0.0 of the VISIR pipeline.

The VISIR calibration files become visible with their DO categories, when the file browser is expanded as shown in figure 4.2.2 on page 19. With the pull-down-menu *File->Add/Remove Files* directories containing VISIR data can be added, as shown in figure 4.2.3 on page 20. Figure 4.2.4 on page 21 shows the example data set distributed with the public release of the VISIR pipeline.

The data are hierarchically organised as preferred by the user. After each file name are shown the classification, the template id, the original filename, the template exposure number and the number of exposures in the template.

More information about a single frame can be obtained by clicking on its name: the corresponding FITS file header will be displayed on the bottom panel, where specific keywords can be opportunely filtered and searched. Images and tables may be easily displayed using the viewers specified in the appropriate *Preferences* fields.

Frames can be selected from the main window with a <CTRL>-left-click for processing by the appropriate recipe: on Figure 4.2.5 on page 22, the example spectroscopic FITS-files and the three spectroscopic calibration files have been selected and the pull-down-menu with the VISIR recipes is shown.

¹The data association is based on the value of the triplet of FITS keys DPR.CATG, DPR.TYPE and DPR.TECH

ESO	VISIR Pipeline User Manual	Doc:	VLT-MAN-ESO-19500-3852
		Issue:	Issue 1.2
		Date:	Date 21st January 2008
		Page:	18 of 77

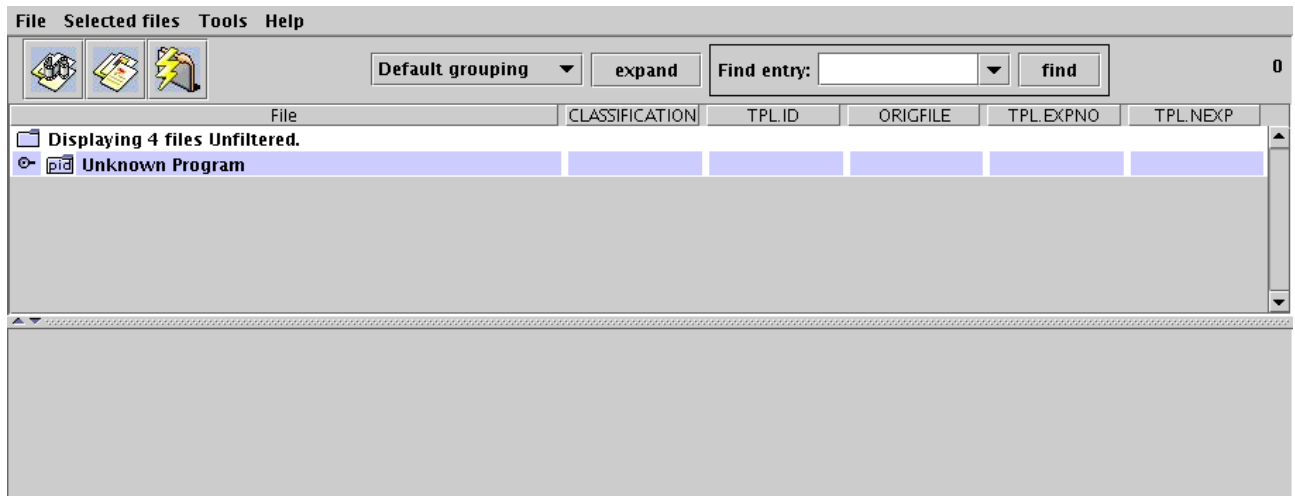


Figure 4.2.1: The Gasgano main window with the VISIR calibration files.

Selecting the appropriate recipe, *visir_spc_phot_ech*, will open a *Gasgano* recipe execution window (see Figure 4.2.6 on page 23), having all the specified files listed in its *Input Frames* panel.

Help about the recipe may be obtained from the *Help* menu. Before launching the recipe, its parameters may be modified on the *Parameters* panel (on top). The window contents might be saved for later use by selecting the *Save Current Settings* entry from the *File* menu, as shown in figure.

At this point the recipe can be launched by pressing the *Execute* button. Messages from the running recipe will appear on the *Log Messages* panel at bottom, and in case of successful completion the products will be listed on the *Output Frames* panel, where they can be easily viewed and located back on the Gasgano main window. The succesful processing of the example data can be seen in figure 4.2.7 on page 24.

Please refer to the *Gasgano User's Manual* [6] for a more complete description of the *Gasgano* interface.

4.2.2 Using EsoRex

EsoRex is a command line utility for running pipeline recipes. It may be embedded by users into data reduction scripts for the automation of processing tasks. On the other side, *EsoRex* doesn't offer all the facilities available with *Gasgano*, and the user must classify and associate the data using the information contained in the FITS header keywords (see section 6.2 on page 27). The user should also take care of defining the input set-of-frames and the appropriate configuration parameters for each recipe run:

The set-of-frames: Each pipeline recipe is run on a set of input FITS data files. When using *EsoRex* the filenames must be listed together with their DO category in an ASCII file, the *set-of-frames* (SOF), that is required when launching a recipe.²

Here is an example of an SOF suitable for the *visir_spc_obs* recipe:

²The set-of-frames corresponds to the *Input Frames* panel of the *Gasgano* recipe execution window (see figure 4.2.6 on page 23).

ESO	VISIR Pipeline User Manual	Doc:	VLT-MAN-ESO-19500-3852
		Issue:	Issue 1.2
		Date:	Date 21st January 2008
		Page:	19 of 77

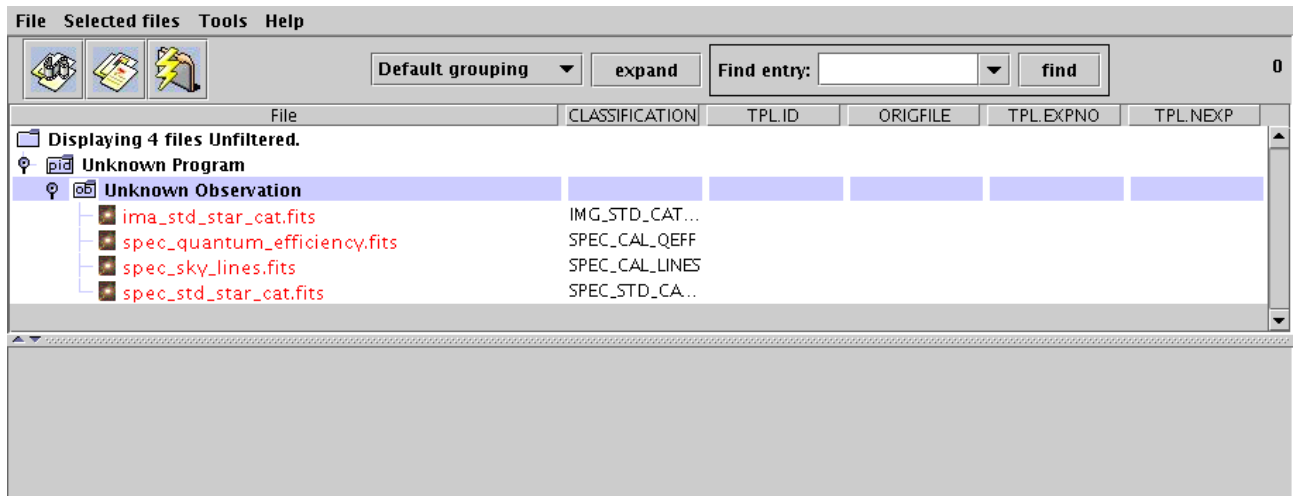


Figure 4.2.2: The Gasgano main window with expanded file view of the initially loaded calibration files.

```
VISIR.2004-09-03T23:23:11.260.fits SPEC_OBS_LMR
VISIR.2004-09-03T23:24:05.263.fits SPEC_OBS_LMR
VISIR.2004-09-03T23:24:52.508.fits SPEC_OBS_LMR
VISIR.2004-09-03T23:25:45.026.fits SPEC_OBS_LMR
spec/cal/spec_sky_lines.fits SPEC_CAL_LINES
spec/cal/spec_quantum_efficiency.fits SPEC_CAL_QEFF
```

Note that the VISIR pipeline recipes do not verify the correctness of the DO category specified by the user in the SOF. The reason of this lack of control is that VISIR recipes are just one component of the complete pipeline running on Paranal, where the task of data classification and association is carried out by separate applications. Moreover, using *Gasgano* as an interface to the pipeline recipes will always ensure a correct classification of all the data frames, assigning the appropriate DO category to each one of them (see section 4.2.1 on page 17).

This lack of control can in some cases be an advantage. For example, observations made with the *VISIR_img_obs_AutoChopnod* template should in general be reduced by the the science observation recipe, *visir_img_combine*. However, if a photometric standard star was observed with this template, the sensitivity can still be determined by using the *visir_img_phot* recipe instead.

Such a procedure requires that the input FITS data are given a classification different from the one they should have.

If such a classification is done with FITS data that are not suitable for the given recipe, the recipe will most likely complete with a more or less descriptive error message, but there is a risk that the recipe will complete without any indication that the input is in fact invalid and the output flawed.

EsoRex syntax: The basic syntax to use ESOREX is the following:

esorex [esorex_options] recipe_name [recipe_options] set_of_frames

To get more information on how to customise ESOREX (see also [6]) run the command:

ESO	VISIR Pipeline User Manual	Doc:	VLT-MAN-ESO-19500-3852
		Issue:	Issue 1.2
		Date:	Date 21st January 2008
		Page:	20 of 77

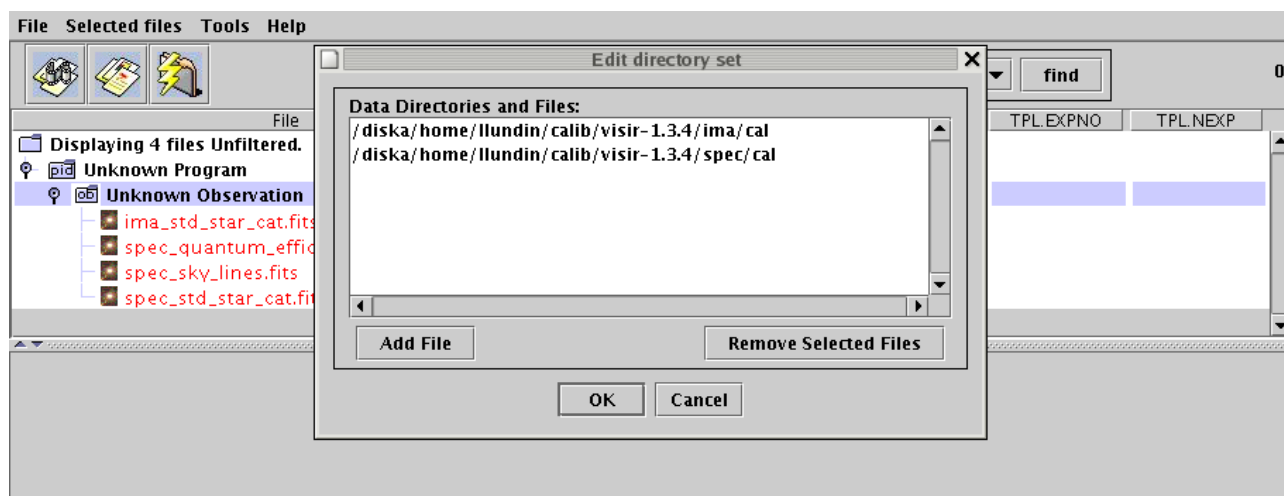


Figure 4.2.3: The Gasgano main window with the file loader window on top.

esorex - -help

To generate a configuration file esorex.rc in the directory \$HOME/.esorex run the command:

esorex - -create-config

A list of all available recipes, each with a one-line description, can be obtained using the command:

esorex - -recipes

All recipe parameters (aliases) and their default values can be displayed by the command

esorex - -params recipe_name

To get a brief description of each parameter meaning execute the command:

esorex - -help recipe_name

To get more details about the given recipe give the command at the shell prompt:

esorex - -man-page recipe_name

Recipe configuration: Each pipeline recipe may be assigned an *EsoRex* configuration file, containing the default values of the parameters related to that recipe.³ The configuration files are normally generated in the directory \$HOME/.esorex, and have the same name as the recipe to which they are related, with the filename extension .rc. For instance, the recipe *visir_img_ff* has its *EsoRex* generated configuration file named *visir_img_ff.rc*, and is generated with the command:

esorex - -create-config visir_img_ff - -low=0.5

The definition of one parameter of a recipe may look like this:

```
visir.visir_img_ff.low=0.5
```

³The *EsoRex* recipe configuration file corresponds to the *Parameters* panel of the *Gasgano* recipe execution window (see figure 4.2.6 on page 23).

ESO	VISIR Pipeline User Manual	Doc:	VLT-MAN-ESO-19500-3852
		Issue:	Issue 1.2
		Date:	Date 21st January 2008
		Page:	21 of 77

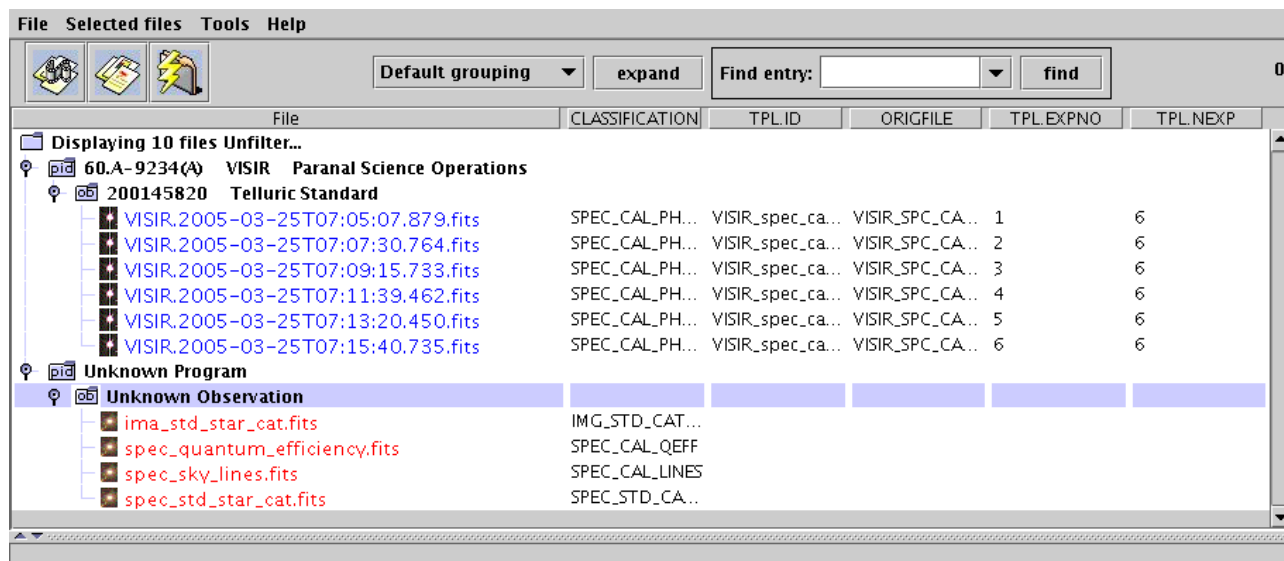


Figure 4.2.4: The Gasgano main window with the example FITS files loaded.

In this example, the parameter `visir.visir_img_ff.low` is set to the value 0.5. In the configuration file generated by *EsoRex*, one or more comment lines are added containing information about the possible values of the parameter, and an alias that could be used as a command line option.

Given a recipe named `visir_recipe_name` the command

esorex - -create-config visir_recipe_name

generates a default configuration file **visir_recipe_name.rc** in the directory `$HOME/.esorex`⁴.

A recipe configuration file different from the default one can be specified on the command line:

esorex - -recipe-config=my_alternative_recipe_config

Recipe parameters are provided in section 9 on page 34 and their role is described in section 10 on page 53.

More than one configuration file may be maintained for the same recipe but, in order to be used, a configuration file not located under `$HOME/.esorex`, or having a name different from the recipe name, should be explicitly specified when launching a recipe.

Recipe execution: A recipe can be run by specifying its name to *EsoRex*, together with the name of a set-of-frames. For instance, the following command line would be used to run the recipe `visir_spc_obs` for processing the files specified in the set-of-frames `visir_spc_obs.sof`:

esorex visir_spc_obs visir_spc_obs.sof

The recipe parameters can be modified either by editing directly the used configuration file, or by specifying new parameter values on the command line using the command line options defined for this purpose. Such command line options should be inserted after the recipe name and before the SOF name, and they will supersede the system defaults and/or the configuration file settings. For instance, to set the `visir_img_ff` recipe `low` threshold parameter to 0.5, the following should be typed:

⁴If a number of recipe parameters are specified on the command line, the given values will be used in the created configuration file.

ESO	VISIR Pipeline User Manual	Doc:	VLT-MAN-ESO-19500-3852
		Issue:	Issue 1.2
		Date:	Date 21st January 2008
		Page:	22 of 77

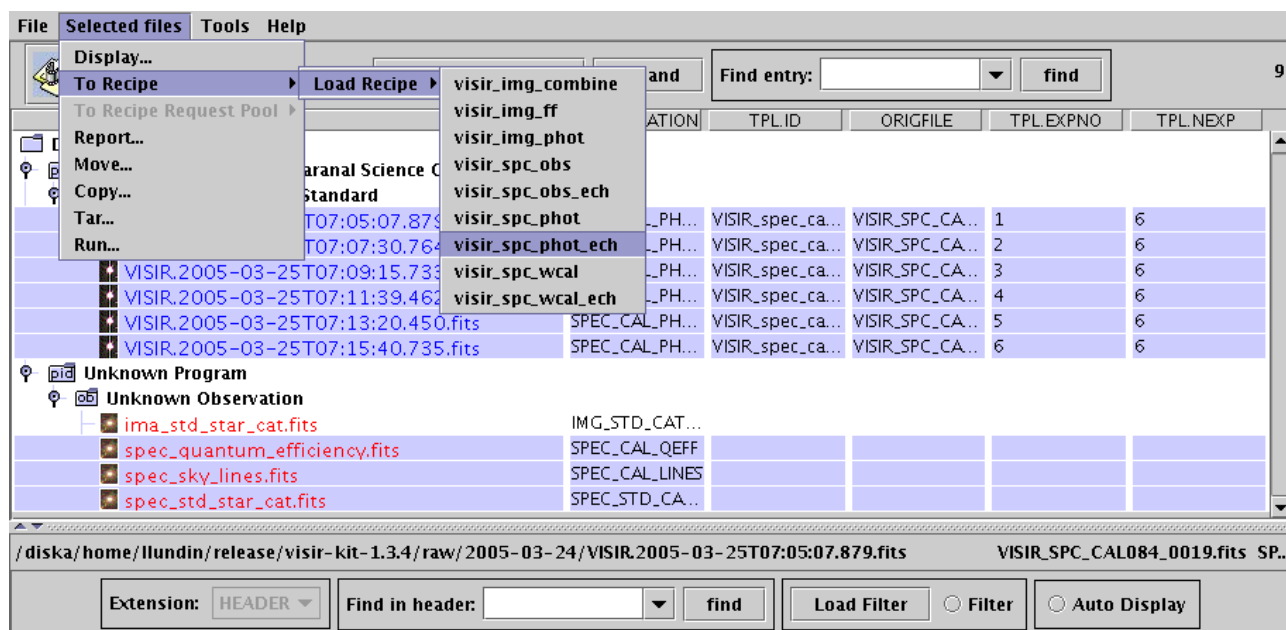


Figure 4.2.5: The Gasgano main window with selected files and the pull-down-menu with the VISIR recipes.

esorex visir_img_ff -low=0.5 visir_img_ff.sof

Here are some more examples of running a recipe:

```
esorex --output-prefix=test visir_img_combine test.sof
esorex --msg-level=debug visir_spc_phot spc_phot.sof
esorex --time=true visir_img_phot --xcorr="15 15 15 15" img_phot.sof
```

For more information on *EsoRex*, see <http://www.eso.org/cpl/esorex.html>.

ESO	VISIR Pipeline User Manual	Doc:	VLT-MAN-ESO-19500-3852
		Issue:	Issue 1.2
		Date:	Date 21st January 2008
		Page:	23 of 77

File Help

Current Queued Executing

Parameters

Name	Value	Default	Range
visir.visir_spc_phot_ech.phi	0.0	0.0	
visir.visir_spc_phot_ech.ksi	0.0	0.0	
visir.visir_spc_phot_ech.eps	0.0	0.0	
visir.visir_spc_phot_ech.delta	0.0	0.0	
visir.visir_spc_phot_ech.nodding			
visir.visir_spc_phot_ech.auto_bpm	<input checked="" type="checkbox"/>	<input checked="" type="checkbox"/>	
visir.visir_spc_phot_ech.rem_glitch	<input type="checkbox"/>	<input type="checkbox"/>	
visir.visir_spc_phot_ech.purge_bad	<input type="checkbox"/>	<input type="checkbox"/>	
visir.visir_spc_phot_ech.union	<input checked="" type="checkbox"/>	<input checked="" type="checkbox"/>	
visir.visir_spc_phot_ech.rej	0 0	0 0	
visir.visir_spc_phot_ech.plot	0	0	
visir.visir_spc_phot_ech.orderoffset	0	0	
visir.visir_spc_phot_ech.offsets			
visir.visir_spc_phot_ech.fixcombi	<input type="checkbox"/>	<input type="checkbox"/>	

Input Frames

Include	Filename	Classification		
<input checked="" type="checkbox"/>	VISIR.2005-03-25T07:05:07.879.fits	SPEC_CAL_PHOT_H...	Locate	Display
<input checked="" type="checkbox"/>	VISIR.2005-03-25T07:07:30.764.fits	SPEC_CAL_PHOT_H...	Locate	Display
<input checked="" type="checkbox"/>	VISIR.2005-03-25T07:09:15.733.fits	SPEC_CAL_PHOT_H...	Locate	Display
<input checked="" type="checkbox"/>	VISIR.2005-03-25T07:11:39.462.fits	SPEC_CAL_PHOT_H...	Locate	Display
<input checked="" type="checkbox"/>	VISIR.2005-03-25T07:13:20.450.fits	SPEC_CAL_PHOT_H...	Locate	Display
<input checked="" type="checkbox"/>	VISIR.2005-03-25T07:15:40.735.fits	SPEC_CAL_PHOT_H...	Locate	Display
<input checked="" type="checkbox"/>	spec_quantum_efficiency.fits	SPEC_CAL_QEFF	Locate	Display
<input checked="" type="checkbox"/>	spec_sky_lines.fits	SPEC_CAL_LINES	Locate	Display
<input checked="" type="checkbox"/>	spec_std_star_cat.fits	SPEC_STD_CATALOG	Locate	Display

Product Naming

Product Root Directory: /diska/home/llundin/release/visir-kit-1.3.4 Browse Naming Scheme: Numeric

Execute

Output Frames Clear

Log Messages Save Clear

Add to pool

Request Pool

Execute Selected

Figure 4.2.6: The Gasgano recipe window with the recipe visir_spc_phot_ech.

ESO	VISIR Pipeline User Manual	Doc:	VLT-MAN-ESO-19500-3852
		Issue:	Issue 1.2
		Date:	Date 21st January 2008
		Page:	24 of 77

File Help

Current Queued Executing

Parameters

Name	Value	Default	Range
visir.visir_spc_phot_ech.phi	0.0	0.0	
visir.visir_spc_phot_ech.ksi	0.0	0.0	
visir.visir_spc_phot_ech.eps	0.0	0.0	
visir.visir_spc_phot_ech.delta	0.0	0.0	
visir.visir_spc_phot_ech.nodding			
visir.visir_spc_phot_ech.auto_bare			

Input Frames

Include	Filename	Classification	Locate	Display
<input checked="" type="checkbox"/>	VISIR.2005-03-25T07:05:07.879.fits	SPEC_CAL_PHOT_H...	Locate	Display
<input checked="" type="checkbox"/>	VISIR.2005-03-25T07:07:30.764.fits	SPEC_CAL_PHOT_H...	Locate	Display
<input checked="" type="checkbox"/>	VISIR.2005-03-25T07:09:15.733.fits	SPEC_CAL_PHOT_H...	Locate	Display
<input checked="" type="checkbox"/>	VISIR.2005-03-25T07:11:39.462.fits	SPEC_CAL_PHOT_H...	Locate	Display
<input checked="" type="checkbox"/>	VISIR.2005-03-25T07:13:20.450.fits	SPEC_CAL_PHOT_H...	Locate	Display
<input checked="" type="checkbox"/>	VISIR.2005-03-25T07:15:40.735.fits	SPEC_CAL_PHOT_H...	Locate	Display

Product Naming

Product Root Directory: /diska/home/llundin/release/visir-kit-1.3.4 Browse Naming Scheme: Numeric

Execute

Output Frames

Filename	Classification	Locate	Display
visir_spc_phot_ech_tab_0000.fits	SPC_PHOT_HRG_TAB	Locate	Display
visir_spc_phot_ech_0000.fits	SPC_PHOT_HRG_COMBINED	Locate	Display
visir_spc_phot_ech_weight_0000.fits	SPC_PHOT_HRG_WEIGHT	Locate	Display

Log Messages

/diska/home/llundin/release/visir-kit-1.3.4/visir_spc_phot_ech_tab_0000.fits
/diska/home/llundin/release/visir-kit-1.3.4/visir_spc_phot_ech_0000.fits
/diska/home/llundin/release/visir-kit-1.3.4/visir_spc_phot_ech_weight_0000.fits
Completion status: SUCCESS

Save Clear

Figure 4.2.7: The Gasgano recipe window with the recipe visir_spc_phot_ech successfully completed.

ESO	VISIR Pipeline User Manual	Doc:	VLT-MAN-ESO-19500-3852
		Issue:	Issue 1.2
		Date:	Date 21st January 2008
		Page:	25 of 77

5 Known Problems

The known problems of the VISIR pipeline version 3.0.0 are:

- The calibration table with sky emission data should be extended down to $6.9\mu m$ to allow processing of this lower wavelength range.
- The long slit spectrum extraction assumes that all beams fall on the detector.
- The spectral calibration does not take the drift of the high resolution spectroscopy scanner into account.
- In a few cases the Strehl ratio exceeds 1.

ESO	VISIR Pipeline User Manual	Doc:	VLT-MAN-ESO-19500-3852
		Issue:	Issue 1.2
		Date:	Date 21st January 2008
		Page:	26 of 77

6 Instrument Data Description

VISIR data uses the FITS format and can be separated into *raw* frames and *product* frames. Raw frames are the unprocessed output of the VISIR instrument observations, while product frames are the result of the VISIR pipeline processing. In addition the VISIR pipeline uses a set of calibration (FITS-) files (standard stars catalogs, detector characteristics, etc.).

Any raw or product frame can be classified on the basis of a set of keywords read from its header. Data classification is typically carried out by the DO or by *Gasgano* [6], that apply the same set of classification rules. The association of a raw frame with calibration data (*e.g.*, of a science frame with a standard star catalogue) can be obtained by matching the values of a different set of header keywords.

Each kind of *raw* frame is typically associated to a single VISIR pipeline recipe, *i.e.*, the recipe assigned to the reduction of that specific frame type. In the pipeline environment this recipe would be launched automatically.

In the following all raw and product VISIR data frames, that can be reduced by the VISIR pipeline version 3.0.0, are listed, together with the keywords used for their classification and correct association. The indicated *DO category* is a label assigned to any data type after it has been classified, which is then used to identify the frames listed in the *Set of Frames* (see section 4.2.2 on page 18).

Raw frames can be classified as *imaging* frames or *spectroscopy* frames. Their intended use is implicitly defined by the assigned recipe.

6.1 General Data Layout

A raw VISIR file is an extension-less FITS-file. The data unit is a cube with $NAXIS3 = 2n + 1$ planes⁵, where n is the number of chopping cycles, which is specified in the FITS-card with the key `HIERARCH ESO DET CHOP NCYCLES`. For each chopping cycle two so called Half-Cycle exposures are made, the A-image from the on-source position of the chopper, and the B-image from the off-source position of the chopper. Each half-cycle image is normalized by IRACE to an exposure time of one DIT; in other words, each half-cycle image is the average over the NDIT individual exposures. For each chopping cycle two planes are stored in the cube. The first two planes correspond to the first chopping cycle and contain:

- The Half-Cycle A-image, A_1 . The pixel-values in each Half-Cycle image are offset by -32768, *i.e.* 32768 has to be added to each pixel in order to obtain the physical pixel value.
- The difference between the two Half-Cycle images, $A_1 - B_1$.

Similarly, the $(2 \times i - 1)$ th and $(2 \times i)$ th planes correspond to the i th chopping cycle and contain

- The Half-Cycle A-image, A_i , stored with an offset identical to A_1 .
- The average of the current and all previous Half-Cycle difference images, $(A_1 - B_1 + A_2 - B_2 + \dots + A_i - B_i)/i$.

The last plane of the cube contains the average of all Half-Cycle difference images, *i.e.* it is identical to the $(2 \times n)$ th plane.

⁵Before 2004-08-31 another data layout was used. The description of this now obsolete format is limited to the statement that it is also supported by the VISIR pipeline

ESO	VISIR Pipeline User Manual	Doc:	VLT-MAN-ESO-19500-3852
		Issue:	Issue 1.2
		Date:	Date 21st January 2008
		Page:	27 of 77

6.2 General frames

These are data that can be obtained using any of the two instrument modes (imaging, spectroscopy), as is the case for flat field exposures. The keyword `ESO INS MODE` is set accordingly to 'IMG' for imaging frames, and to 'SPC' for spectroscopy frames, to indicate the intended use for the data.

- **Flat field:**

Processed by: `visir_img_ff`

Association keywords: `INSTRUME = VISIR`

Classification:

DPR.CATG	DPR.TYPE	DPR.TECH	DO Category
CALIB	FLAT	IMAGE , DIRECT	IM_CAL_FLAT
CALIB	FLAT	SPECTRUM , DIRECT	SPEC_CAL_FLAT
TECHNICAL	FLAT	IMAGE , DIRECT	IM_TECH_FLAT
TECHNICAL	FLAT	SPECTRUM , DIRECT	SPEC_TECH_FLAT

- **Dark image:**

Processed by: `visir_img_dark`

Association keywords: `INSTRUME = VISIR`

Classification:

DPR.CATG	DPR.TYPE	DPR.TECH	DO Category
CALIB	DARK	IMAGE	IM_CAL_DARK
CALIB	DARK	SPECTRUM	SPEC_CAL_DARK

See [5] for a definition of the values of `DPR.CATG`, `DPR.TYPE` and `DPR.TECH`.

6.3 Imaging frames

- **Science Observation:**

Processed by: `visir_img_combine`

Association keywords: `INSTRUME = VISIR`

Classification:

DPR.CATG	DPR.TYPE	DPR.TECH	DO Category
SCIENCE	OBJECT	IMAGE , CHOPNOD , JITTER	IM_OBS_CHO_NOD_JIT
SCIENCE	OBJECT	IMAGE , CHOPPING , JITTER	IM_OBS_CHO_JIT
SCIENCE	OBJECT	IMAGE , NODDING , JITTER	IM_OBS_NOD_JIT
SCIENCE	OBJECT	IMAGE , DIRECT , JITTER	IM_OBS_DIR_JIT

ESO	VISIR Pipeline User Manual	Doc:	VLT-MAN-ESO-19500-3852
		Issue:	Issue 1.2
		Date:	Date 21st January 2008
		Page:	28 of 77

- **Standard Star:**

Processed by: `visir_img_phot`

Association keywords: INSTRUME = VISIR

Classification:

DPR.CATG	DPR.TYPE	DPR.TECH	DO Category
CALIB	STD	IMAGE , CHOPNOD	IM_CAL_PHOT

- **Transmission frame:**

Processed by: `visir_img_trans`

Association keywords: INSTRUME = VISIR

Classification:

DPR.CATG	DPR.TYPE	DPR.TECH	DO Category
TECHNICAL	STD , TRANSMISSION	IMAGE , CHOPPING	IM_TEC_TRANS

See [5] for a definition of the values of DPR.CATG, DPR.TYPE and DPR.TECH.

6.4 Spectroscopy frames

These frames are generated with the VISIR spectrometer.

- **Long Slit Wavelength Calibration:**

Processed by: `visir_spc_wcal`

Association keywords: INSTRUME = VISIR

Classification:

DPR.CATG	DPR.TYPE	DPR.TECH	DO Category
CALIB	WAVE	SPECTRUM , DIRECT	SPEC_CAL_LMR_WCAL

- **Long Slit Science Observation:**

Processed by: `visir_spc_obs`

Association keywords: INSTRUME = VISIR

Classification:

DPR.CATG	DPR.TYPE	DPR.TECH	DO Category
SCIENCE	OBJECT	SPECTRUM , CHOPNOD	SPEC_OBS_LMR

- **Long Slit Standard Star:**

Processed by: `visir_spc_phot`

Association keywords: INSTRUME = VISIR

Classification:

ESO	VISIR Pipeline User Manual	Doc:	VLT-MAN-ESO-19500-3852
		Issue:	Issue 1.2
		Date:	Date 21st January 2008
		Page:	29 of 77

DPR.CATG	DPR.TYPE	DPR.TECH	DO Category
CALIB	STD	SPECTRUM, CHOPNOD	SPEC_CAL_PHOT

- **Echelle Wavelength Calibration:**

Processed by: `visir_spc_wcal_ech`

Association keywords: INSTRUME = VISIR

Classification:

DPR.CATG	DPR.TYPE	DPR.TECH	DO Category
CALIB	WAVE	ECHELLE	SPEC_CAL_HRG_WCAL

- **Echelle Science Observation:**

Processed by: `visir_spc_obs_ech`

Association keywords: INSTRUME = VISIR

Classification:

DPR.CATG	DPR.TYPE	DPR.TECH	DO Category
SCIENCE	OBJECT	ECHELLE	SPEC_OBS_HRG

- **Echelle Standard Star:**

Processed by: `visir_spc_phot_ech`

Association keywords: INSTRUME = VISIR

Classification:

DPR.CATG	DPR.TYPE	DPR.TECH	DO Category
CALIB	STD	ECHELLE	SPEC_CAL_PHOT_HRG

See [5] for a definition of the values of DPR.CATG, DPR.TYPE and DPR.TECH.

ESO	VISIR Pipeline User Manual	Doc:	VLT-MAN-ESO-19500-3852
		Issue:	Issue 1.2
		Date:	Date 21st January 2008
		Page:	30 of 77

7 Static Calibration Data

This section describes the input required by the VISIR pipeline in addition to the instrument data. This input data is all stored as single-extension FITS tables.

7.1 Imaging Standard Stars

The catalogue of imaging standard stars currently contains information about 425 stars. For each star the catalogue contains the following information:

- The star name, e.g. HD108903.
- Spectral type, e.g. M3.5V.
- Right ascension and declination.
- The flux $[Jy]$ for each of the 23 supported imaging filters.
- The flux $[Jy]$ for each of the 6 supported spectroscopy filters.

This catalogue is stored in the file `ima/cal/ima_std_star_cat.fits`.

See also [9].

7.2 Spectroscopy Standard Stars

The catalogue of spectroscopy standard stars currently contains information about 469 stars, namely the 425 standard stars used for imaging and an additional 44 Hipparcos standard stars. For each star the catalogue contains the following information:

- The star name, e.g. HD108903 or HIP100469.
- Right ascension and declination.
- The model flux $[mJy]$ for 2300 wavelengths in the range 5 to 28 μm .

This catalogue is stored in the file `spec/cal/spec_std_star_cat.fits`.

See also [9].

7.3 Spectrometer Detector Quantum Efficiency

The spectrometer detector quantum efficiency at various wavelengths is stored in `spec/cal/spec_quantum_efficiency.fits`. The quantum efficiency ranges from about 1% to close to 70% (at 11.9 μm). See figure 7.3.1 on the facing page.

See also [9].

ESO	VISIR Pipeline User Manual	Doc:	VLT-MAN-ESO-19500-3852
		Issue:	Issue 1.2
		Date:	Date 21st January 2008
		Page:	31 of 77

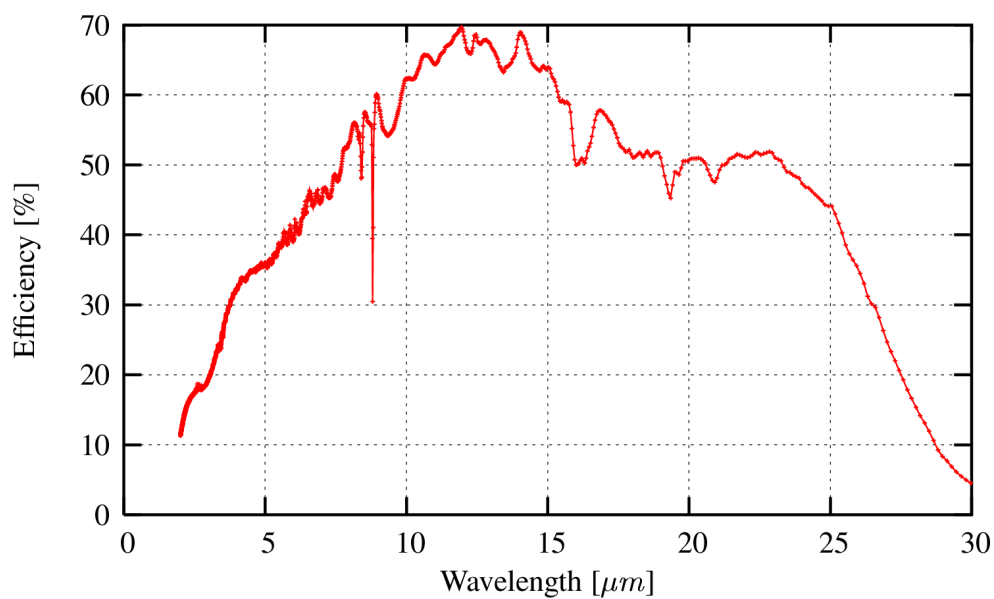


Figure 7.3.1: The Detector Quantum Efficiency.

7.4 Atmospheric Emission Spectrum

The atmospheric emission spectrum (normalized to 1) has been created using the HITRAN database of molecular line parameters and the US Standard Atmosphere atmospheric profile, for an altitude of 2600m and 1.5mm of precipitable water vapor at zenith.

The atmospheric emission is stored in `spec/cal/spec_sky_lines.fits`.

See also [9].

ESO	VISIR Pipeline User Manual	Doc:	VLT-MAN-ESO-19500-3852
		Issue:	Issue 1.2
		Date:	Date 21st January 2008
		Page:	32 of 77

8 Data Reduction

In this section the usage of the VISIR pipeline recipes is described.

8.1 Reduction Cascade

The reduction cascade is a schematic representation of the recipe dependencies for pipeline products. There are currently no dependencies in the reduction cascade of the VISIR pipeline, with the exception that the output bad-pixel map of the **visir_img_ff** recipe may optionally be used as input by the other recipes.

8.2 VISIR pipeline recipes

The VISIR pipeline version 3.0.0 offers a set of 11 stand-alone recipes, intended for these fundamental operations:

Creation of general calibration data:

visir_img_ff: Creates a flat field and a bad pixel map from a sequence of flat fields at different exposure levels in both imaging and spectroscopy. See also the *VISIR Calibration Plan* (VLT-PLA-VIS-14300-0009) section 4.6.

visir_img_dark: Creates a dark image and maps of hot, cold and deviant pixels from a sequence of dark exposures in both imaging and spectroscopy. See also the *VISIR Calibration Plan* (VLT-PLA-VIS-14300-0009).

Imaging data reduction:

visir_img_combine: Combines a stack of chopped, nodded and optionally jittered images into a single image and an additional contribution map.

Creation of calibration data for Imaging:

visir_img_phot: Determines the conversion factor between the number of detector counts and the astrophysical source flux using a catalogue of photometric standard stars and a set of images of a star from this catalogue. The photometric sensitivity is determined as well. Creates the same products as **visir_img_combine**. See also the *VISIR Calibration Plan* (VLT-PLA-VIS-14300-0009) sections 4.1.2 and 4.5.

visir_img_trans: Creates a table of filter transmissions.

Spectroscopic data reduction:

visir_spc_wcal: Estimates the dispersion relation using the atmospheric spectrum in a long-slit spectroscopy half-cycle frame. Creates a spectral table. See also the *VISIR Calibration Plan* (VLT-PLA-VIS-14300-0009) sections 5.1.1 and 5.2.

ESO	VISIR Pipeline User Manual	Doc:	VLT-MAN-ESO-19500-3852
		Issue:	Issue 1.2
		Date:	Date 21st January 2008
		Page:	33 of 77

visir_spc_obs: Wavelength calibration as **visir_spc_wcal** followed by spectrum extraction from a combined image. Creates the same products as **visir_spc_phot**.

visir_spc_wcal_ech: Same as **visir_spc_wcal**, but intended for the spectrometer echelle instead of the long slit.

visir_spc_obs_ech: Same as **visir_spc_obs**, but intended for the spectrometer echelle instead of the long slit.

Creation of calibration data for Spectroscopy:

visir_spc_phot: Determines for the spectrometer long slit the conversion factor between the number of spectrometer detector counts and the astrophysical source flux using a catalogue of spectrophotometric standard stars. The photometric sensitivity is determined as well. Creates a combined image, a weight map and a spectral table. See also the *VISIR Calibration Plan* (VLT-PLA-VIS-14300-0009) sections 5.1.2 and 5.3.

visir_spc_phot_ech: Same as **visir_spc_phot**, but intended for the spectrometer echelle instead of the long slit..

Section 9 on the next page gives a general description on the use of recipes, together with more detailed information on the individual recipes.

8.3 Unsupported Observation Modes

A few VISIR templates lead to observations that are currently not supported by the pipeline. Amongst the currently offered science templates, this is only the case for the `VISIR_img_obs_GenericChopNod` template, used for raster (or mosaic) imaging.

Partial processing by the VISIR pipeline is however possible. Multiple images obtained at a same telescope positions can be reduced with the `visir_img_combine` recipes by manually setting the DO Category in `EsoRex` or the Classification field in `Gasgano` to `IM_OBS_DIR_JIT`. Sets of pairs of images obtained at two different telescope positions (object and sky) can be reduced in the same way.

ESO	VISIR Pipeline User Manual	Doc:	VLT-MAN-ESO-19500-3852
		Issue:	Issue 1.2
		Date:	Date 21st January 2008
		Page:	34 of 77

9 Pipeline Recipe Interfaces

This section provides for each recipe examples of the required input data (and their classification). In the following we assume that `/path_file_raw/filename_raw.fits` and `/path_file_cal/filename_cal.fits` are existing FITS files (e.g. `/data1/visir/com2/VISIR.2004-09-01T09:47:39.316.fits` and `/cal/visir/spec/cal/spec_quantum_efficiency.fits`).

We also provide a list of the pipeline products for each recipe, indicating their default recipe name (eventually replaced by `esorex` to a given standard), the value of their FITS keyword `HIERARCH ESO PRO CATG` (in short `PRO CATG`) and a short description.

For each recipe we also list in a table the input parameters (as they appear in the recipe configuration file), the corresponding aliases (the corresponding names to be eventually set on command line) and their default values. Also quality control parameters are listed. Those are written in the headers of the relevant pipeline products. More information on instrument quality control can be found on <http://www.eso.org/qc>.

In addition to the products mentioned below, all recipes produce a PAF (VLT Parameter File), which is used in the ESO pipeline operations for quality control. The information in this file is the quality control data also found in the recipe products and as such this intermediate file can be ignored.

9.1 visir_img_ff

The VISIR pipeline recipe `visir_img_ff` creates a flat field and a bad pixel image from a sequence of flat fields at different exposure levels in both imaging and spectroscopy.

9.1.1 Input files for visir_img_ff

The input Set-Of-Frames shall specify at least two files with one of the DO categories:

DO Category	Type	Explanation
IM_CAL_FLAT	Raw Frame	Calibration Exposure
IM_TECH_FLAT	Raw Frame	Calibration Exposure
SPEC_CAL_FLAT	Raw Frame	Calibration Exposure
SPEC_TECH_FLAT	Raw Frame	Calibration Exposure

9.1.2 Input Parameters for visir_img_ff

The recognized recipe options are

Parameter	Possible Values (with default)	Explanation
low	float, 0.2	Low threshold for the bad pixel map.
high	float, 5.0	High threshold for the bad pixel map.

ESO	VISIR Pipeline User Manual	Doc:	VLT-MAN-ESO-19500-3852
		Issue:	Issue 1.2
		Date:	Date 21st January 2008
		Page:	35 of 77

9.1.3 Products from visir_img_ff

Successful completion of this recipe will, depending on the input DO category, create one of these pairs of FITS-files

File name	Product Category (PRO CATG)	Explanation
visir_img_ff.fits	IMG_FF	The flat field (imaging).
visir_img_ff_bpm.fits	IMG_BPM	The map of bad pixels (imaging).
visir_img_ff.fits	SPEC_FF	The flat field (spectroscopy).
visir_img_ff_bpm.fits	SPEC_BPM	The map of bad pixels (spectroscopy).
visir_img_ff.fits	IMG_TECH_FF	Technical flat field (imaging).
visir_img_ff_bpm.fits	IMG_TECH_BPM	The map of bad pixels (imaging).
visir_img_ff.fits	SPEC_TECH_FF	Technical flat field (spectroscopy).
visir_img_ff_bpm.fits	SPEC_TECH_BPM	The map of bad pixels (spectroscopy).

The non-technical imaging bad pixel map can be used as input in the *visir_img_combine* and *visir_img_phot* recipes, and the non-technical spectroscopy bad pixel map can be used as input in the spectroscopy recipes.

9.1.4 QC Parameters from visir_img_ff

This recipe generates the Quality Control parameters

```
QC NBBADPIX
QC CAPA
QC FPNOISE
QC LAMPFLUX
```

and writes them in the FITS header of its products. See appendix B on page 68 for their definition.

9.2 visir_img_combine

The VISIR pipeline recipe *visir_img_combine* combines a stack of chopped, jittered and/or nodded exposures.

9.2.1 Input files for visir_img_combine

The input Set-Of-Frames shall specify at least one pair of files with one of the DO categories:

DO Category	Type	Explanation
IM_OBS_CHO_NOD_JIT	Raw Frame	Science Exposures

ESO	VISIR Pipeline User Manual	Doc:	VLT-MAN-ESO-19500-3852
		Issue:	Issue 1.2
		Date:	Date 21st January 2008
		Page:	36 of 77

IM_OBS_CHO_JIT	Raw Frame	Science Exposures
IM_OBS_NOD_JIT	Raw Frame	Science Exposures
IM_OBS_DIR_JIT	Raw Frame	Science Exposures

Additionally, a calibration file with a bad pixel map with a PRO.CATG of IMG_BPM may be added to the Set-Of-Frames with DO category: IMG_BPM.

9.2.2 Input Parameters for visir_img_combine

The recognized recipe options are

Parameter	Possible Values (with default)	Explanation
auto_bpm	true /false	Enables/disables automatic detection and correction of bad pixels (see also section 10.1.1 on page 53)
plot	0 ,1,2	<p>The recipe can produce a number of predefined plots. Zero means that none of the plots are produced, while increasing values (e.g. 1 or 2) increases the number of plots produced. If the plotting fails a warning is produced, and the recipe continues.</p> <p>The default behaviour of the plotting is to use gnuplot (with option -persist). The recipe currently produces 1D-plots using gnuplot commands. The recipe user can control the actual plotting-command used by the recipe to create the plot by setting the environment variable IRPLIB_PLOTTER. Currently, if IRPLIB_PLOTTER is set it must contain the string 'gnuplot'. Setting it to 'cat > my_gnuplot_\$\$txt' causes a number of ASCII-files to be created, which each produce a plot when given as standard input to gnuplot (e.g. later or on a different computer). A finer control of the plotting options can be obtained by writing an executable script, e.g. my_gnuplot.pl, that executes gnuplot after setting the desired gnuplot options (e.g. set terminal pslatex color) and then setting IRPLIB_PLOTTER to my_gnuplot.pl.</p> <p>The predefined plots include plotting of images. Images can be plotted not only with gnuplot, but also using the pnm format. This is controlled with the environment variable IRPLIB_IMAGER. If IRPLIB_IMAGER is set to a string that does not contain the word gnuplot, the recipe will generate the plot in pnm format. E.g. setting IRPLIB_IMAGER to 'cat display - &' will produce a gray-scale image using the image viewer display.</p>

ESO	VISIR Pipeline User Manual	Doc:	VLT-MAN-ESO-19500-3852
		Issue:	Issue 1.2
		Date:	Date 21st January 2008
		Page:	37 of 77

nod	filename, <none>	<p>An optional ASCII specification of the nodding positions (in case they are missing from the FITS-file).</p> <p>The file must consist of one line per input FITS-file and each line must consist of an integer (which is ignored) followed by a 0 or 1 (to indicate object or sky).</p>
off	filename, <none>	<p>An optional ASCII specification of the offsets in case they are missing from the FITS-file.</p> <p>The file must consist of one line per input pair of FITS-files, and each line must consist of two numbers, which represent the shift in pixel of that image.</p> <p>The reference point of the coordinates of the shift may be chosen by the user. A convenient reference point causes the offset of the first image to be (0,0) and the other offsets to be relative to the first image.</p>
g	true/ false	<p>Enables/disables automatic filtering of glitches. This is an experimental filtering of the input images. It is I/O- and CPU-intensive and is better left off.</p>
p	true/ false	<p>Enables/disables automatic purging of half-cycle images whose median deviates more than a factor three from the mean of the medians of half-cycle images or whose standard deviation deviates more than a factor three from the mean of their standard deviations.</p> <p>It is I/O- and CPU-intensive with no certain improvement to the output.</p>
rej	"%u %u", " 0 0 "	<p>Each resulting pixel is the average of the corresponding (interpolated) pixel value in each jittered image.</p> <p>A positive value, n1, for the first of the two integers specifies that for each pixel the smallest n1 pixel values shall be ignored in the averaging. Similarly, a positive value, n2, for the second of the two integers specifies that for each pixel the largest n2 pixel values shall be ignored in the averaging.</p>
ref	true/ false	<p>Enables/disables user-defined refining of the offsets. Enabling requires a specification of object positions. See options objs and xcorr and subsection 10.1.4 on page 54.</p>
objs	filename, <none>	<p>The shift and add of images needs anchor points that typically are bright objects. These are normally detected automatically but with user-defined refining of offsets enabled, they must be provided by the user through an ASCII file containing one line per anchor point with each line consisting of its x and y coordinate (in pixels). This file is ignored with user-defined refining of offsets disabled.</p> <p>See also subsection 10.1.4 on page 54.</p>
xcorr	"%u %u %u %u", " 10 10 25 25 "	<p>If user-defined refining of offsets is enabled a cross-</p>

ESO	VISIR Pipeline User Manual	Doc:	VLT-MAN-ESO-19500-3852
		Issue:	Issue 1.2
		Date:	Date 21st January 2008
		Page:	38 of 77

		correlation of the images is performed. In order to speed up this process, this cross-correlation is performed only on smaller rectangles around the anchor points. The first two parameters is the half-size of this rectangle in pixels. The second pair is the maximum shift in x and y (pixels) evaluated by the cross-correlation on the rectangle.
		Used only if user-defined refining of offsets is enabled. See also subsection 10.1.4 on page 54.
comb_meth	"first", " union ", "inter"	Combine images using one of: 1) Onto the first image (first); 2) Their union (union); 3) Their intersection (inter). NB: Only the 'first'-method produces an image product with WCS coordinates. A successful 'first'-method always produces a combined image with dimensions equal to those of the input images. For the 'union'-method the result image is at least as large as the input images while for the 'inter'-method the result image is at most as large as the input images.
nstripe	%u, 15	Number of destriping iterations. Set to zero to disable the destriping.
mstripe	true/ false	Enables/disables morphological cleaning in each destriping iteration.

9.2.3 Products from visir_img_combine

Successful completion of this recipe will, depending on the input DO category, create one of these pairs of FITS-files

File name	Product Category (PRO CATG)	Explanation
visir_img_combine.fits	IMG_OBS_COMBINED_CNJ	the combined image (CHOPNOD).
visir_img_combine_contrib.fits	IMG_OBS_CONTRIB_MAP_CNJ	the contribution map (CHOPNOD).
visir_img_combine.fits	IMG_OBS_COMBINED_CJ	the combined image (CHOPPING).
visir_img_combine_contrib.fits	IMG_OBS_CONTRIB_MAP_CJ	the contribution map (CHOPPING).
visir_img_combine.fits	IMG_OBS_COMBINED_NJ	the combined image (NODDING).
visir_img_combine_contrib.fits	IMG_OBS_CONTRIB_MAP_NJ	the contribution map (NODDING).
visir_img_combine.fits	IMG_OBS_COMBINED_DJ	the combined image (DIRECT).
visir_img_combine_contrib.fits	IMG_OBS_CONTRIB_MAP_DJ	the contribution map (DIRECT).

ESO	VISIR Pipeline User Manual	Doc:	VLT-MAN-ESO-19500-3852
		Issue:	Issue 1.2
		Date:	Date 21st January 2008
		Page:	39 of 77

See [9.12.1](#) and [9.12.2](#) on page [51](#) for a description of these products.

9.2.4 QC Parameters from `visir_img_combine`

This recipe generates the Quality Control parameters QC BACKGD MEAN and QC CAPA and writes them in the FITS header of its products. See appendix [B](#) on page [68](#) for their definition.

9.3 `visir_img_phot`

The VISIR pipeline recipe `visir_img_phot` determines the conversion factor between the number of detector counts and the astrophysical source flux using a catalogue of photometric standard stars. The photometric sensitivity is determined as well.

9.3.1 Input files for `visir_img_phot`

The input Set-Of-Frames shall specify at least one file with the DO category:

ESO	VISIR Pipeline User Manual	Doc:	VLT-MAN-ESO-19500-3852
		Issue:	Issue 1.2
		Date:	Date 21st January 2008
		Page:	40 of 77

DO Category	Type	Explanation
IM_CAL_PHOT	Raw Frame	Calibration Exposures

Additionally, a calibration file with a bad pixel map with a PRO.CATG of IMG_BPM may be added to the Set-Of-Frames with DO category: IMG_BPM.

9.3.2 Input Parameters for visir_img_phot

The recognized recipe options are those of recipe **visir_img_combine** (see section 9.2 on page 35).

9.3.3 Products from visir_img_phot

Successful completion of this recipe will create the FITS-files

File name	Product Category (PRO CATG)	Explanation
visir_img_phot.fits	IMG_PHOT_COMBINED	the combined image.
visir_img_phot_contrib.fits	IMG_PHOT_CONTRIB_MAP	the contribution map.

See 9.12.1 and 9.12.2 on page 51 for a description of these products.

9.3.4 QC Parameters from visir_img_phot

This recipe generates the Quality Control parameters

```

QC BACKGD MEAN
QC BACKGD SIGMA
QC CAPA
QC CONVER
QC EXPTIME
QC FILTER
QC FLUXSNR
QC FLUXSNR NOISE
QC FLUXTOT
QC FWHMX
QC FWHMX NEG1
QC FWHMX NEG2
QC FWHMX POS1
QC FWHMX POS2
QC FWHMY
QC FWHMY NEG1
QC FWHMY NEG2

```


ESO	VISIR Pipeline User Manual	Doc:	VLT-MAN-ESO-19500-3852
		Issue:	Issue 1.2
		Date:	Date 21st January 2008
		Page:	41 of 77

QC FWHMY POS1
QC FWHMY POS2
QC JYVAL
QC SENSIT
QC STARNAME
QC STREHL
QC STREHL ERROR

and writes them in the FITS header of its products. See appendix B on page 68 for their definition.

9.4 visir_img_dark

The VISIR pipeline recipe *visir_img_dark* creates a dark image and three maps of hot, cold and deviant pixels in both imaging and spectroscopy.

9.4.1 Input files for visir_img_dark

The input Set-Of-Frames shall specify at least two files with one of the DO categories:

DO Category	Type	Explanation
IM_CAL_DARK	Raw Frame	Calibration Exposure
SPEC_CAL_DARK	Raw Frame	Calibration Exposure

9.4.2 Input Parameters for visir_img_dark

The recognized recipe options are

Parameter	Possible Values (with default)	Explanation
rej_bord	"%u %u %u %u", " 50 50 50 50 "	Rejected left right bottom and top border [pixel].
hot_t	float, 10.0	Hot pixel map threshold.
cold_t	float, 6.0	Cold pixel map threshold.
dev_t	float, 5.0	Deviant pixel map threshold.
nsamples	integer, 100	Number of samples for Read-Out Noise (RON) computation.
hsize	integer, 2	Half size of the window for Read-Out Noise (RON) computation.

9.4.3 Products from visir_img_dark

Successful completion of this recipe will, depending on the input DO category, create one of these two sets of FITS-files

ESO	VISIR Pipeline User Manual	Doc:	VLT-MAN-ESO-19500-3852
		Issue:	Issue 1.2
		Date:	Date 21st January 2008
		Page:	42 of 77

File name	Product Category (PRO CATG)	Explanation
visir_img_dark_set01_avg.fits	IMG_DARK_AVG	The dark image (imaging).
visir_img_dark_set01_hotpix.fits	IMG_DARK_HOT	The map of hot pixels (imaging).
visir_img_dark_set01_coldpix.fits	IMG_DARK_COLD	The map of cold pixels (imaging).
visir_img_dark_set01_devpix.fits	IMG_DARK_DEV	The map of deviant pixels (imaging).
visir_img_dark_set01_avg.fits	SPEC_DARK_AVG	The dark image (spectroscopy).
visir_img_dark_set01_hotpix.fits	SPEC_DARK_HOT	The map of hot pixels (spectroscopy).
visir_img_dark_set01_coldpix.fits	SPEC_DARK_COLD	The map of cold pixels (spectroscopy).
visir_img_dark_set01_devpix.fits	SPEC_DARK_DEV	The map of deviant pixels (spectroscopy).

9.4.4 QC Parameters from visir_img_dark

This recipe generates the Quality Control parameters

```
QC DARKMED
QC NBCOLPIX
QC NBHOTPIX
QC NBDEVPIX
QC RON1
QC RON2
QC RON3
...
```

and writes them in the FITS header of its products. See appendix B on page 68 for their definition.

9.5 visir_img_trans

The VISIR pipeline recipe *visir_img_trans* computes the transmission at different wavelengths by comparing the flux of a bright star for different observations.

It is used only at the observatory to evaluate the transmission of the instrument filters.

9.5.1 Input files for visir_img_trans

The input Set-Of-Frames shall specify at least one file with the DO category:

DO Category	Type	Explanation
IM_TEC_TRANS	Raw Frame	Calibration Exposure

ESO	VISIR Pipeline User Manual	Doc:	VLT-MAN-ESO-19500-3852
		Issue:	Issue 1.2
		Date:	Date 21st January 2008
		Page:	43 of 77

9.5.2 Input Parameters for visir_img_trans

This recipe does not recognize any recipe options.

9.5.3 Products from visir_img_trans

Successful completion of this recipe will create a FITS-table

File name	Product Category (PRO CATG)	Explanation
visir_img_trans.fits	IMG_TRANS_TAB	The transmission table (imaging).

9.5.4 QC Parameters from visir_img_trans

This recipe does currently not generate any Quality Control parameters.

9.6 visir_spc_wcal

The VISIR pipeline recipe *visir_spc_wcal* estimates the dispersion relation using the atmospheric spectrum in a long-slit spectroscopy half-cycle frame.

9.6.1 Input files for visir_spc_wcal

The input Set-Of-Frames shall specify files with DO categories:

DO Category	Type	Explanation
SPEC_CAL_LMR_WCAL	Raw Frame	Calibration or Science Exposures (at least one pair)
SPEC_CAL_LINES	Calibration	Atmospheric Transmission
SPEC_CAL_QEFF	Calibration	Detector Quantum-Efficiency
BPM	Calibration	Optional bad pixel map with PRO.CATG SPEC_BPM

Input of type Calibration is static calibration data, which is part of the pipeline. The science exposures must be obtained with long slit spectroscopy (low, medium or high resolution).

9.6.2 Input Parameters for visir_spc_wcal

The recognized recipe options are

Parameter	Possible Values (with default)	Explanation
auto_bpm	true /false	See subsection 9.2 on page 35 .

ESO	VISIR Pipeline User Manual	Doc:	VLT-MAN-ESO-19500-3852
		Issue:	Issue 1.2
		Date:	Date 21st January 2008
		Page:	44 of 77

plot	0,1,2	See subsection 9.2 on page 35 . The figures in section 10 on page 53 have been made with plot=2.
slit_skew	float, 1.6	Distortion correction: Skew of slit [degrees] (clockwise)
spectrum_skew	float, 0.7	Distortion correction: LMR Skew of spectrum [degrees] (counter-clockwise). Not used in High Resolution.
vert_arc	float, 1.04	Distortion correction: LR Detector vertical curvature [pixel]. Reduced by a factor 4 in MR. Not used in HR A-side. Increased by a factor 115/52 in HR B-side.
hori_arc	float, 0.08	Distortion correction: LMR Detector horizontal curvature [pixel]. Increased by a factor 1.5 in HR A-side. Reduced by a factor 2 in HR B-side.

Please see [10.1.2](#) on page [53](#) for a description of the distortion correction. The default values for the two parameters of the curvature correction are set to values that are optimal in low resolution spectroscopy. The recipe can only determine the actual resolution of its input data after the input parameters have been processed. The reduction- and increase-factors for the parameters of the curvature correction are therefore necessary in order for the parameter default values to yield an optimal distortion correction also in medium and high resolution. This scaling is applied also to the user supplied values of these parameters. For example, the default value of vert_arc is 1.04. If the input data is obtained in medium resolution, the value of vert_arc is reduced by a factor 4, i.e. to 0.26. If the recipe user changes this parameter to 1.20 and uses it on data obtained in medium resolution, a value of $1.20/4 = 0.30$ is actually used in the correction.

9.6.3 Products from visir_spc_wcal

Successful completion of this recipe will create the FITS-file

File name	Product Category (PRO CATG)	Explanation
visir_spc_wcal_spectrum_tab.fits	SPC_WCAL_LMR_TAB	the spectral table.

See [9.12.4](#) on page [51](#) for a description of this product.

9.6.4 QC Parameters from visir_spc_wcal

This recipe generates the Quality Control parameters

```
QC BACKGD MEAN
QC CAPA
QC PHDEGREE
QC PHDISPX0
QC PHDISPX1
QC XC
```

ESO	VISIR Pipeline User Manual	Doc:	VLT-MAN-ESO-19500-3852
		Issue:	Issue 1.2
		Date:	Date 21st January 2008
		Page:	45 of 77

QC XCDEGREE
QC XCDISPX0
QC XCDISPX1
QC XCENTROI
QC XCSHIFT
QC XCWLEN
QC XFWHM

and writes them in the FITS header of its products. See appendix B on page 68 for their definition.

9.7 visir_spc_obs

The VISIR pipeline recipe *visir_spc_obs* performs a wavelength calibration as **visir_spc_wcal** followed by spectrum extraction from a combined image.

9.7.1 Input files for visir_spc_obs

The input Set-Of-Frames shall specify files with DO categories:

DO Category	Type	Explanation
SPEC_OBS_LMR	Raw Frame	Long Slit Science Exposures (at least one pair)
SPEC_CAL_LINES	Calibration	Atmospheric Transmission
SPEC_CAL_QEFF	Calibration	Detector Quantum-Efficiency
BPM	Calibration	Optional bad pixel map with PRO.CATG SPEC_BPM

Input of type Calibration is static calibration data, which is part of the pipeline. The science exposures must be obtained with long slit spectroscopy (low, medium or high resolution).

9.7.2 Input Parameters for visir_spc_obs

The recognized recipe options are those of recipe **visir_spc_wcal** (see section 9.6 on page 43) and additionally these options, described in subsection 9.2 on page 35: nod, g, p and rej.

9.7.3 Products from visir_spc_obs

Successful completion of this recipe will create the FITS-files

File name	Product Category (PRO CATG)	Explanation
visir_spc_obs_spectrum_tab.fits	SPC_OBS_LMR_TAB	the spectral table.
visir_spc_obs.fits	SPC_OBS_LMR_COMBINED	the combined image (the 2D spectrum).
visir_spc_obs_weight.fits	SPC_OBS_LMR_WEIGHT	the weight map.

ESO	VISIR Pipeline User Manual	Doc:	VLT-MAN-ESO-19500-3852
		Issue:	Issue 1.2
		Date:	Date 21st January 2008
		Page:	46 of 77

See [9.12.5](#), [9.12.1](#) and [9.12.5](#) on page [52](#) for a description of these products.

9.7.4 QC Parameters from visir_spc_obs

This recipe generates the same Quality Control parameters as those of recipe `visir_spc_wcal`, see subsection [9.6.4](#) on page [44](#).

9.8 visir_spc_phot

The VISIR pipeline recipe `visir_spc_phot` performs a wavelength calibration as **visir_spc_wcal** followed by spectrum extraction from a combined image finalized by a determination of photometric sensitivity.

9.8.1 Input files for visir_spc_phot

The input Set-Of-Frames shall specify files with DO categories:

DO Category	Type	Explanation
SPEC_CAL_PHOT	Raw Frame	Calibration Exposures (at least one pair)
SPEC_CAL_LINES	Calibration	Atmospheric Transmission
SPEC_CAL_QEFF	Calibration	Detector Quantum-Efficiency
SPEC_STD_CATALOG	Calibration	Catalogue of spectroscopy standard stars
BPM	Calibration	Optional bad pixel map with PRO.CATG SPEC_BPM

Input of type Calibration is static calibration data, which is part of the pipeline. The science exposures must be obtained with long slit spectroscopy (low, medium or high resolution).

9.8.2 Input Parameters for visir_spc_phot

The recognized recipe options are those of recipe **visir_spc_obs** (see section [9.6](#) on page [43](#)) and additionally this option, described in subsection [9.2](#) on page [35](#): `off`.

9.8.3 Products from visir_spc_phot

Successful completion of this recipe will create the FITS-files

File name	Product Category (PRO CATG)	Explanation
<code>visir_spc_phot_tab.fits</code>	SPC_PHOT_TAB	the spectral table.
<code>visir_spc_phot.fits</code>	SPC_PHOT_COMBINED	the combined image (the 2D spectrum).
<code>visir_spc_phot_weight.fits</code>	SPC_PHOT_WEIGHT	the weight map.

See [9.12.6](#), [9.12.1](#) and [9.12.3](#) on page [51](#) for a description of these products.

ESO	VISIR Pipeline User Manual	Doc:	VLT-MAN-ESO-19500-3852
		Issue:	Issue 1.2
		Date:	Date 21st January 2008
		Page:	47 of 77

9.8.4 QC Parameters from visir_spc_phot

This recipe generates the Quality Control parameters

```
QC BACKGD MEAN
QC CAPA
QC EXPTIME
QC SENS MEAN
QC SENS STDEV
QC STARNAME
```

and writes them in the FITS header of its products. See appendix B on page 68 for their definition.

9.9 visir_spc_wcal_ech

The VISIR pipeline recipe *visir_spc_wcal_ech* reduces echelle spectroscopy half-cycle frames in the same way as *visir_spc_wcal*.

9.9.1 Input files for visir_spc_wcal_ech

The input Set-Of-Frames shall specify files with DO categories:

DO Category	Type	Explanation
SPEC_CAL_HRG_WCAL	Raw Frame	Calibration or Science Exposures (at least one pair)
SPEC_CAL_LINES	Calibration	Atmospheric Transmission
SPEC_CAL_QEFF	Calibration	Detector Quantum-Efficiency
BPM	Calibration	Optional bad pixel map with PRO.CATG SPEC_BPM

Input of type Calibration is static calibration data, which is part of the pipeline. The science exposures must be obtained with echelle-spectroscopy.

9.9.2 Input Parameters for visir_spc_wcal_ech

The recognized recipe options are those of recipe **visir_spc_wcal** (see section 9.6 on page 43) and additionally this option:

orderoffset	integer, 0	Echelle order offset. The offset is relative to the main order. The allowed range of offsets depend on the selected echelle-mode and covers 4 or 5 orders, e.g. -2,-1,0,1,2. If the main order is e.g. 8 an order offset of +1 will cause the recipe to base the data reduction on
-------------	------------	---

ESO	VISIR Pipeline User Manual	Doc:	VLT-MAN-ESO-19500-3852
		Issue:	Issue 1.2
		Date:	Date 21st January 2008
		Page:	48 of 77

order 9. With a positive order offset the central wavelength becomes smaller while for a negative order offset the central wavelength becomes larger.

Recipe **visir_spc_wcal_ech** has a default value of 0.0 for the four options for distortion correction:

Parameter	Possible Values (with default)
slit_skew	float, 0.0
spectrum_skew	float, 0.0
vert_arc	float, 0.0
hori_arc	float, 0.0

9.9.3 Products from visir_spc_wcal_ech

Successful completion of this recipe will create the FITS-file

File name	Product Category (PRO CATG)	Explanation
visir_spc_wcal_ech_spectrum_tab.fits	SPC_WCAL_HRG_TAB	the spectral table.

See [9.12.4](#) on page [51](#) for a description of this product.

9.9.4 QC Parameters from visir_spc_wcal_ech

This recipe generates the same Quality Control parameters as those of recipe `visir_spc_wcal`, see subsection [9.6.4](#) on page [44](#).

9.10 visir_spc_obs_ech

The VISIR pipeline recipe `visir_spc_obs_ech` reduces echelle spectroscopy data in the same way as `visir_spc_obs`.

9.10.1 Input files for visir_spc_obs_ech

The input Set-Of-Frames shall specify files with DO categories:

DO Category	Type	Explanation
SPEC_OBS_HRG	Raw Frame	Science Exposures (at least one pair)
SPEC_CAL_LINES	Calibration	Atmospheric Transmission
SPEC_CAL_QEFF	Calibration	Detector Quantum-Efficiency
BPM	Calibration	Optional bad pixel map with PRO.CATG SPEC_BPM

ESO	VISIR Pipeline User Manual	Doc:	VLT-MAN-ESO-19500-3852
		Issue:	Issue 1.2
		Date:	Date 21st January 2008
		Page:	49 of 77

Input of type Calibration is static calibration data, which is part of the pipeline. The science exposures must be obtained with echelle-spectroscopy.

9.10.2 Input Parameters for `visir_spc_obs_ech`

The recognized recipe options are those of recipe `visir_spc_obs` (see section 9.7 on page 45) and additionally this option, described in subsection 9.9 on page 47: `orderoffset`.

Just like recipe `visir_spc_wcal_ech`, recipe `visir_spc_obs_ech` has a default value of 0.0 for the four options for distortion correction:

Parameter	Possible Values (with default)
<code>slit_skew</code>	float, 0.0
<code>spectrum_skew</code>	float, 0.0
<code>vert_arc</code>	float, 0.0
<code>hori_arc</code>	float, 0.0

9.10.3 Products from `visir_spc_obs_ech`

Successful completion of this recipe will create the FITS-files

File name	Product Category (PRO CATG)	Explanation
<code>visir_spc_obs_ech_spectrum_tab.fits</code>	SPC_OBS_HRG_TAB	the spectral table.
<code>visir_spc_obs_ech.fits</code>	SPC_OBS_HRG_COMBINED	the combined image (the 2D spectrum).
<code>visir_spc_obs_ech_weight.fits</code>	SPC_OBS_HRG_WEIGHT	the weight map.

See 9.12.5, 9.12.1 and 9.12.3 on page 51 for a description of these products.

9.10.4 QC Parameters from `visir_spc_obs_ech`

This recipe generates the same Quality Control parameters as those of recipe `visir_spc_wcal`, see subsection 9.6.4 on page 44.

9.11 `visir_spc_phot_ech`

The VISIR pipeline recipe `visir_spc_phot_ech` reduces echelle spectroscopy data in the same way as `visir_spc_phot`.

9.11.1 Input files for `visir_spc_phot_ech`

The input Set-Of-Frames shall specify files with DO categories:

ESO	VISIR Pipeline User Manual	Doc:	VLT-MAN-ESO-19500-3852
		Issue:	Issue 1.2
		Date:	Date 21st January 2008
		Page:	50 of 77

DO Category	Type	Explanation
SPEC_CAL_PHOT_HRG	Raw Frame	Calibration Exposures (at least one pair)
SPEC_CAL_LINES	Calibration	Atmospheric Transmission
SPEC_CAL_QEFF	Calibration	Detector Quantum-Efficiency
SPEC_STD_CATALOG	Calibration	Catalogue of spectroscopy standard stars
BPM	Calibration	Optional bad pixel map with PRO.CATG SPEC_BPM

Input of type Calibration is static calibration data, which is part of the pipeline. The science exposures must be obtained with echelle-spectroscopy.

9.11.2 Input Parameters for visir_spc_phot_ech

The recognized recipe options are those of recipe **visir_spc_phot** (see section 9.8 on page 46) and additionally this option, described in subsection 9.9 on page 47: orderoffset.

Just like recipe **visir_spc_wcal_ech**, recipe **visir_spc_obs_ech** has a default value of 0.0 for the four options for distortion correction:

Parameter	Possible Values (with default)
slit_skew	float, 0.0
spectrum_skew	float, 0.0
vert_arc	float, 0.0
hori_arc	float, 0.0

9.11.3 Products from visir_spc_phot_ech

Successful completion of this recipe will create the FITS-files

File name	Product Category (PRO CATG)	Explanation
visir_spc_phot_ech_tab.fits	SPC_PHOT_HRG_TAB	the spectral table.
visir_spc_phot_ech.fits	SPC_PHOT_HRG_COMBINED	the combined image (the 2D spectrum).
visir_spc_phot_ech_weight.fits	SPC_PHOT_HRG_WEIGHT	the weight map.

See 9.12.6, 9.12.1 and 9.12.3 on the facing page for a description of these products.

9.11.4 QC Parameters from visir_spc_phot_ech

This recipe generates the same Quality Control parameters as those of recipe **visir_spc_phot**, see subsubsection 9.8.4 on page 47.

ESO	VISIR Pipeline User Manual	Doc:	VLT-MAN-ESO-19500-3852
		Issue:	Issue 1.2
		Date:	Date 21st January 2008
		Page:	51 of 77

9.12 Product Description

Even though FITS files are self-documenting, the most important ones are described in the following.

9.12.1 Combined Image

This product has one of these product categories: IMG_OBS_COMBINED, IMG_PHOT_COMBINED, SPC_OBS_LMR_COMBINED, SPC_OBS_HRG_COMBINED, SPC_PHOT_COMBINED or SPC_PHOT_HRG_COMBINED.

This is the combination of a list of chopped, noded and optionally jittered images.

9.12.2 Contribution Map

This product has one of these product categories: IMG_OBS_CONTRIB_MAP, IMG_PHOT_CONTRIB_MAP.

This is the an image with positive integer values, that for each pixel indicate the number of pixels from the noded images that contribute to the resulting pixel in the combined image.

9.12.3 Spectroscopic Weight Map

This product has one of these product categories: SPC_OBS_LMR_WEIGHT, SPC_OBS_HRG_WEIGHT, SPC_PHOT_WEIGHT, SPC_PHOT_HRG_WEIGHT.

The pixel values in this image indicate the weight given to each pixel in the combined image when extracting the 1D-spectrum. The weights are the same in each row of the image.

9.12.4 Spectroscopic Table for Wavelength Calibration

This product has one of these two product categories: SPC_WCAL_LMR_TAB and SPC_WCAL_HRG_TAB

This table comprises 4 columns and 256 rows, one per detector row.

WLEN The wavelength of the light detected on that detector row [m].

SPC_MODEL_PH The intensity of the model spectrum at the wavelength that the physical model predicts will be detected on that detector row. The displacement (in pixels) between the two model spectra is written in the FITS card with the key HIERARCH ESO QC XCSHIFT [$Jradian\ m^{-3}s^{-1}$].

SPC_MODEL_XC The intensity of the model spectrum at the wavelength in column WLEN [$Jradian\ m^{-3}s^{-1}$].

SPC_SKY The intensity of the sky spectrum at the wavelength in column WLEN [$ADU\ s^{-1}$].

ESO	VISIR Pipeline User Manual	Doc:	VLT-MAN-ESO-19500-3852
		Issue:	Issue 1.2
		Date:	Date 21st January 2008
		Page:	52 of 77

9.12.5 Spectroscopic Tables for Science Observation

This product has one of these two product categories: SPC_OBS_LMR_TAB and SPC_OBS_HRG_TAB

This table comprises 6 columns and 256 rows, one per detector row. The first 4 columns are identical those those in the previous section, the last two are:

SPC_EXTRACTED The intensity of the extracted (object) spectrum at the wavelength in column WLEN [$ADU\ s^{-1}$].

SPC_ERROR The error (noise per pixel) on the extracted intensity at the wavelength in column WLEN [$ADU\ s^{-1}$].

9.12.6 Spectroscopic Tables for Photometric Calibration

This product has one of these two product categories: SPC_PHOT_TAB and SPC_PHOT_HRG_TAB

This table comprises 8 columns and 256 rows, one per detector row. The first 6 columns are identical those those in the previous section, the last two are:

STD_STAR_MODEL The flux of the standard star at the wavelength in column WLEN [mJy].

SENSITIVITY The sensitivity at the wavelength in column WLEN [mJy].

ESO	VISIR Pipeline User Manual	Doc:	VLT-MAN-ESO-19500-3852
		Issue:	Issue 1.2
		Date:	Date 21st January 2008
		Page:	53 of 77

10 Algorithms

In this section the data reduction procedures applied by the pipeline recipes currently in use (see section 8.2 on page 32) are described in some detail.

10.1 General Algorithms

Several algorithms, such as wavelength calibration or bad pixel cleaning, are used by several recipes, and are thus described separately.

10.1.1 Bad pixel detection and cleaning

The bad pixels are detected in the Half-Cycle frames as those whose pixel value exceeds the fixed limit 65000 (this comparison is done after the offset of 32768 has been added to the pixels of the Half-Cycle frames). In spectroscopic long slit mode the cleaning of bad pixels can be avoided, since the subsequent distortion correction ignores the bad pixels. Otherwise, bad pixels are cleaned by interpolation with the neighboring pixels, (using the CPL function *cpl_detector_interpolate_rejected()*, see [12]).

10.1.2 Distortion correction

In spectroscopic long slit mode the optical distortion is known analytically. This is used to directly correct the distortion, by interpolating the distortion corrected pixel value from the source pixels. This interpolation ignores source pixels that are marked as bad. The VISIR User's manual [9] describes the optical distortion correction in greater detail. In that description, Φ is equal to slit_skew, Ψ is equal to spectrum_skew, Δ is equal to hori_arc and ϵ is equal to vert_arc. The interpolation itself is done with using the CPL function *cpl_image_get_interpolated()*, see [12].

10.1.3 Creation of noddred images

The list of noddred images are created in this way:

- From each input file a single image is created. With the recommended, default settings of the parameters `p=false` and `g=false` this image is the last plane in the file, see section 6.1 on page 26.
- The images from each pair of input files are then combined. In staring mode (no nodding, i.e. both images are from the on-source position of the chopper) the average of the two images are computed. In nodding mode one image (*A*) is from the on-source position of the chopper, while the other (*B*) is from the off-source position of the chopper. In this mode the average between *A* and $-B$ is computed.
- The noddred images are divided by $2DIT$, where *DIT* is the Detector Integration Time. The factor 2 is due to the fact that the on-source and the off-source images both contribute with one whole DIT.

ESO	VISIR Pipeline User Manual	Doc:	VLT-MAN-ESO-19500-3852
		Issue:	Issue 1.2
		Date:	Date 21st January 2008
		Page:	54 of 77

10.1.4 Combination of noddred images

The noddred images are jittered and are thus shifted and added to form the final combined image. The offsets stored in the FITS cards with keys `HIERARCH ESO SEQ CUMOFFSETX` and `HIERARCH ESO SEQ CUMOFFSETY` of the on-source frames are used for this. A user-defined refinement of these offsets may optionally be specified with anchor-points via the recipe options described in subsection 9.2.2 on page 36. Figure 10.1.1 on page 60 shows an example of the combination of a set of noddred images, without the user-defined refinement.

10.1.5 Wavelength Calibration

The dispersion relation is approximated well by a first degree polynomial, $\lambda(i) = i \cdot \Delta\lambda + \lambda_0$, $i = 1, 2, \dots, 256$, where $\lambda(i)$ is the wavelength at the center of the i 'th pixel. Thus in long slit mode, $\lambda(i)$, $i = 128.5$ is the central wavelength.

The physical model described in *Parameters for setting the VISIR Spectrometer* (VLT-TRE-VIS-14321-5046) includes as dispersion relation a first degree polynomial $\lambda_{ph}(i) = i \cdot \Delta\lambda_{ph} + \lambda_{ph,0}$, which is used as a first guess of $\lambda(i)$. It is assumed that $\Delta\lambda_{ph}$ is a sufficiently good approximation to $\Delta\lambda$, thus only λ_0 needs to be determined.

λ_0 is determined in the following way:

- 1 The field direction in a Half-Cycle frame is collapsed, producing a 1-dimensional spectrum of the atmosphere. See figure 10.1.2 on page 61.
- 2 A model spectrum is created from a model of the atmospheric emission. See figure 10.1.2 on page 61.
- 3 The offset, Δi , (in pixels) that maximizes the cross-correlation between these two spectra is used to determine λ_0 , since $\lambda_0 - \lambda_{ph,0} = \Delta i \cdot \Delta\lambda_{ph}$. Δi is determined to an accuracy of 0.01 pixel. See figure 10.1.3 on page 62.

The model spectrum is created as follows:

- The atmospheric emission is assumed to be equivalent to that of a black body at 253 K.
- This emission is multiplied with the emissivity of the atmosphere, see section 7.4 on page 31.
- This is smoothed by convolution with a function that is itself a convolution of two functions:

A Gaussian with

$$\sigma = \frac{w_{\text{FWHM}}}{2\sqrt{2\ln 2}},$$

where the spectral FWHM is defined as $w_{\text{FWHM}} = \lambda L / R$, with L being the Linear dispersion and R being the spectral Resolution as defined by the optical model. With L in unit pixel/ m and λ in unit m , w_{FWHM} is in unit pixel.

A Top-hat with a width of $\frac{w_{\text{slit}}}{w_{\text{pfov}}}$, where w_{slit} is the value of the FITS-card with the key `HIERARCH ESO INS SLIT1 WID` which has unit arcseconds and where $w_{\text{pfov}} = 0.127$ arcseconds/pixel is the spectral slit width.

ESO	VISIR Pipeline User Manual	Doc:	VLT-MAN-ESO-19500-3852
		Issue:	Issue 1.2
		Date:	Date 21st January 2008
		Page:	55 of 77

See figure 10.1.4 on page 63 for an example of such a smoothing function.

- Added to that is the emission of the telescope itself, assumed to be equivalent to that of a black body with the temperature of the main mirror (retrieved from the FITS header) and with an emissivity of 0.12.
- The model spectrum is lastly multiplied by the detector quantum efficiency.

10.1.6 Spectrum Extraction

The spectrum is extracted from the combined image with the following optimal extraction method:

- If the spectrum is obtained in long slit mode, each row is supposed to have a mean of zero. In order to ensure this the actual mean of each row is computed and subtracted from each row.
- The standard deviation of the noise in the resulting image is estimated using an iterative σ -clipping ($\sigma=3$).
- Each flux, $F(\lambda)$, in the 1D-spectrum is computed as a weighted average of the pixels in the field direction. The weights are the same for all wavelengths, they are obtained by collapsing the spectral dimension of the 2D-spectrum and normalizing the absolute flux of this 1D-image to 1.
- A pixel with an absolute value less than $\sigma=3$ times the standard deviation of the noise is considered noise and is excluded from the weighted average. See figure 10.1.5 on page 64.

For each wavelength in the extracted 1D-spectrum the noise, $\sigma(F(\lambda))$ is computed as follows:

- The above spectrum extraction identifies for each wavelength a number of pixels in the mean-corrected image as being noise. The standard deviation of these pixels is computed.
- For each wavelength the 2-norm of the spatial weights of the non-noisy pixels is computed.
- $\sigma(F(\lambda))$ is the product of these two numbers. See figure 10.1.5 on page 64.

10.1.7 Spectral Photometric Calibration

The spectral photometric calibration is carried out as follows:

- The model flux, $F_{\text{model}}(\lambda)$, is obtained from the standard star catalog for the wavelengths in the extracted spectrum.
- The sensitivity in unit mJy at 10σ in 1 hour is then computed for each wavelength λ as

$$\frac{F_{\text{model}}(\lambda) \cdot \sigma(F(\lambda)) \cdot 10 \cdot \sqrt{t/3600s}}{F(\lambda)},$$

where $F(\lambda)$ and $\sigma(F(\lambda))$ is the extracted intensity and its error estimate at wavelength λ (see subsection 10.1.6), and where the exposure time t is $\text{DIT} \cdot \text{NDIT} \cdot \text{NFILES} \cdot \text{NCHOP} \cdot 2$, with the factor 2 due to the Half-Cycle chopping.

ESO	VISIR Pipeline User Manual	Doc:	VLT-MAN-ESO-19500-3852
		Issue:	Issue 1.2
		Date:	Date 21st January 2008
		Page:	56 of 77

10.1.8 Imaging Photometric Calibration

The imaging photometric calibration is carried out as follows:

- The calibration is carried out on the combined image, once for each of the N_b beams ($N_b = 3$ or 4 depending on the value of the FITS card with key ESO SEQ CHOPNOD DIR) using a circle of radius $R = 20$ around the center of the standard star in the image.
- The background flux, $F_{i,\text{bg}}$ is estimated as the median intensity of the pixels that are between R and $R + 10$ pixels away from the star center, for $i = 1, 2, \dots, N_b$.
- The flux of the star, $F_i(r)$ is computed as the flux within r pixels from the star corrected for $F_{i,\text{bg}}$, for $r = 1, 2, 3, \dots, R$ and $i = 1, 2, \dots, N_b$.
- The error on $F_i(r)$ is estimated as $\sigma(F_i(r)) = \sigma(B) \cdot \sqrt{n}$, where $\sigma(B)$ is the estimated background noise, and n is the number of pixels within the circle. $\sigma(B)$ is computed on the entire combined image with 5 iterations of $\sigma = 3$ clipping, and is written in the QC parameter QC BACKGD SIGMA, see appendix B.
- The radius, $r_{i,\text{max}}$ that maximizes

$$\frac{F_i(r)}{\sigma(F_i(r))}$$

is determined.

- The best N_b contributions are combined:

$$F_{\text{best}} = \sum_{i=1}^{N_b} F_i(r_{i,\text{max}}),$$

$$\sigma(F_{\text{best}}) = \sqrt{\sum_{i=1}^{N_b} \sigma(F_i(r_{i,\text{max}}))^2}.$$

- The catalog contains a model flux, F_{model} , in unit Jy .
- The sensitivity is then computed in unit mJy at 10σ in 1 hour as

$$\frac{10^3 \cdot F_{\text{model}} \cdot \sigma(F_{\text{best}}) \cdot 10 \cdot \sqrt{t/3600s}}{F_{\text{best}}},$$

where the exposure time t is calculated as in subsection 10.1.7 on the preceding page.

The total flux and conversion factor are also computed as

$$F_{\text{total}} = \sum_{i=1}^{N_b} F_i(R)$$

and

$$f_{\text{conversion}} = \frac{F_{\text{total}}}{F_{\text{model}}}.$$

ESO	VISIR Pipeline User Manual	Doc:	VLT-MAN-ESO-19500-3852
		Issue:	Issue 1.2
		Date:	Date 21st January 2008
		Page:	57 of 77

10.1.9 Computation of Strehl Ratio

The computation of the Strehl ratio is carried out on the combined image in a circle with a radius $R = 3$ arcseconds (around the center of the first positive star).

The recipe assumes that the extent of the star is limited by a circle with radius $R_{\text{star}} = 2$ arcseconds.

The Strehl ratio is computed with these steps:

- The background flux, F_{bg} is estimated as the flux of the pixels located between R_{star} and R whose intensities are in the 10th percentile and not in the 90th percentile.
- The flux of the star, F_{star} is computed as the flux within R_{star} corrected for F_{bg} , and $I_{\text{star,max}}$ is the peak intensity of the star.
- The ideal Point Spread Function is computed as the inverse Fourier Transform of the ideal Optical Transfer Function, which is based on the telescope and instrument characteristics. F_{psf} is the flux of the PSF and $I_{\text{psf,max}}$ is its peak intensity.
- The Strehl ratio is then

$$\frac{I_{\text{star,max}}}{F_{\text{star}}} / \frac{I_{\text{psf,max}}}{F_{\text{psf}}}.$$

The error bound on the Strehl ratio is

$$c \cdot \pi \cdot \sigma_R \cdot w_{\text{pfov}} \cdot R_{\text{star}}^2 / F_{\text{star}},$$

where $c = 0.007/0.0271$ is determined empirically, where w_{pfov} is the imaging pixel field of view (obtained from the FITS card with key `ESO INS PFOV` with unit arcseconds/pixel), and where σ_R is the estimated noise on the pixels located between R_{star} and R , (using the CPL function `cpl_flux_get_noise_ring()`, see [12]).

10.2 Recipe Algorithms

10.2.1 visir_img_ff

This is the algorithm used by this recipe:

- For each flat-field image the median (intensity) is computed.
- For each pixel on the detector, the pixel intensity is plotted against the corresponding median.
- Ideally, all pixels should have an equal gain thus the plots should be straight lines with a slope of 1. Since this is not the case, some pixels have a relative gain greater than 1 while others have a relative gain less than 1. For each pixel this relative gain is stored in the main product of the flat-field recipe.
- Pixels with a relative gain outside the range from 1/5 to 5 are flagged as bad in the produced bad-pixel map.

ESO	VISIR Pipeline User Manual	Doc:	VLT-MAN-ESO-19500-3852
		Issue:	Issue 1.2
		Date:	Date 21st January 2008
		Page:	58 of 77

10.2.2 visir_img_dark

The dark image is computed as the mean of the input dark images.

10.2.3 visir_img_combine

This is the algorithm used by this recipe:

- The image combination described in subsections [10.1.3](#) and [10.1.4](#) on page [54](#).

10.2.4 visir_img_phot

This is the algorithm used by this recipe:

- The image combination described in subsections [10.1.3](#) and [10.1.4](#) on page [54](#).
- The photometric calibration in imaging described in subsection [10.1.8](#) on page [56](#).

This recipe also computes the Strehl ratio, see subsection [10.1.9](#) on the preceding page.

10.2.5 visir_spc_wcal

This is the algorithm used by this recipe:

- The bad pixel detection described in [10.1.1](#) on page [53](#).
- The distortion correction described in [10.1.2](#) on page [53](#).
- The wavelength calibration described in [10.1.5](#) on page [54](#).

10.2.6 visir_spc_obs

This is the algorithm used by this recipe:

- The steps described for visir_spc_wcal in the section [10.2.5](#).
- The image combination described in subsections [10.1.3](#) and [10.1.4](#) on page [54](#).
- The spectrum extraction described in subsection [10.1.6](#) on page [55](#).

ESO	VISIR Pipeline User Manual	Doc:	VLT-MAN-ESO-19500-3852
		Issue:	Issue 1.2
		Date:	Date 21st January 2008
		Page:	59 of 77

10.2.7 visir_spc_phot

This is the algorithm used by this recipe:

- The steps described for visir_spc_obs in the section [10.2.6](#) on the preceding page.
- The photometric calibration described in subsection [10.1.7](#) on page [55](#).

10.2.8 visir_spc_wcal_ech

This is the algorithm used by this recipe:

- The extraction of the relevant order from the echelle, i.e. per default the main order or else on the order specified with the orderoffset recipe option.
- The steps described for visir_spc_wcal in subsection [10.2.5](#) on the preceding page.

10.2.9 visir_spc_obs_ech

This is the algorithm used by this recipe:

- The extraction of the relevant order from the echelle, i.e. per default the main order or else on the order specified with the orderoffset recipe option.
- The steps described for visir_spc_obs in subsection [10.2.6](#) on the facing page.

10.2.10 visir_spc_phot_ech

This is the algorithm used by this recipe:

- The extraction of the relevant order from the echelle, i.e. per default the main order or else on the order specified with the orderoffset recipe option.
- The steps described for visir_spc_phot in subsection [10.2.7](#).

ESO	VISIR Pipeline User Manual	Doc:	VLT-MAN-ESO-19500-3852
		Issue:	Issue 1.2
		Date:	Date 21st January 2008
		Page:	60 of 77

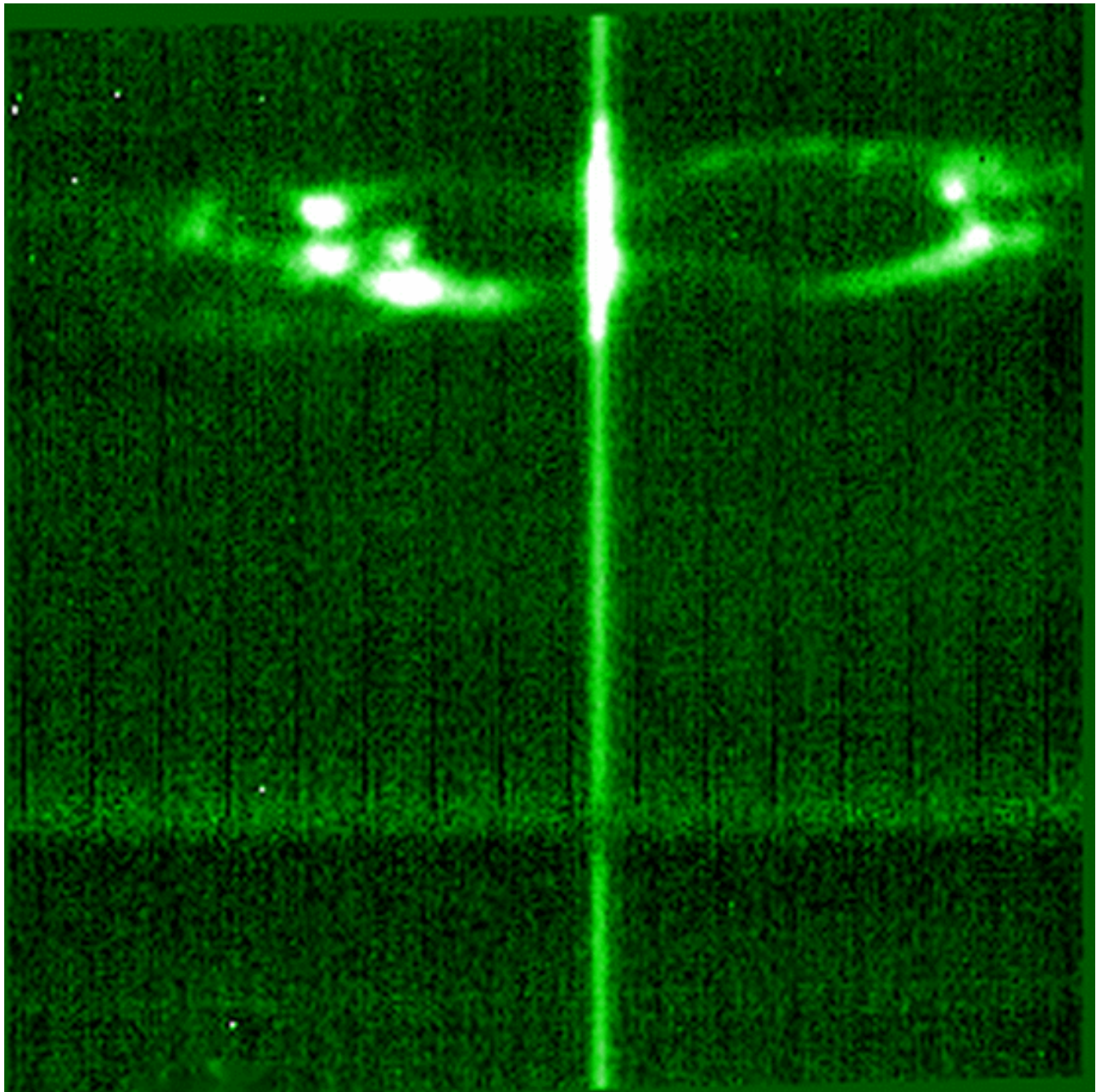


Figure 10.1.1: *An example image produced by combining a set of noded images using the recipe `visir_img_combine` (the shades of green have been added afterwards).*

ESO	VISIR Pipeline User Manual	Doc:	VLT-MAN-ESO-19500-3852
		Issue:	Issue 1.2
		Date:	Date 21st January 2008
		Page:	61 of 77

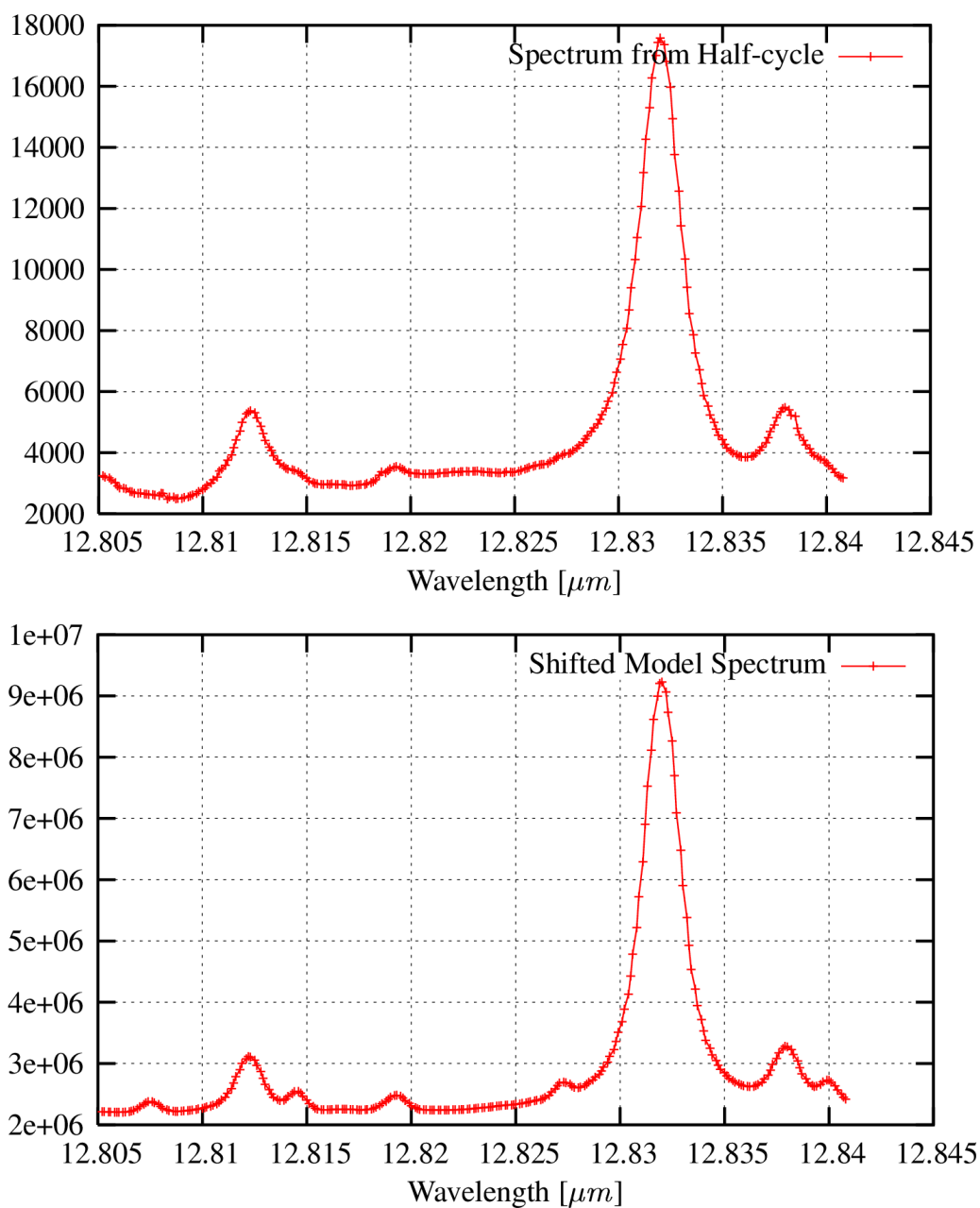


Figure 10.1.2: Example of Atmospheric spectrum from a 1/2-cycle frame and the corresponding, shifted model spectrum that maximizes the cross-correlation with that spectrum.

ESO	VISIR Pipeline User Manual	Doc:	VLT-MAN-ESO-19500-3852
		Issue:	Issue 1.2
		Date:	Date 21st January 2008
		Page:	62 of 77

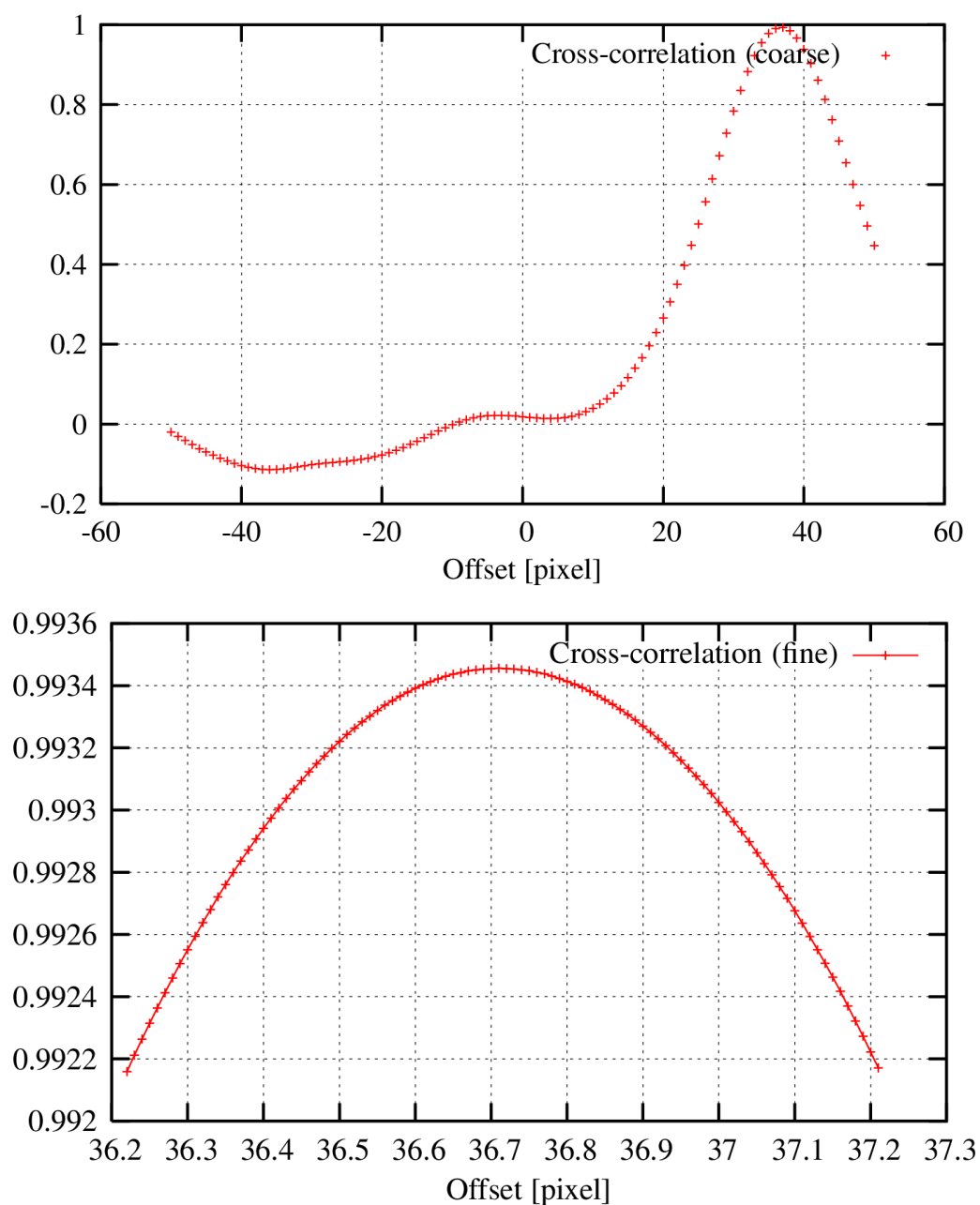


Figure 10.1.3: The cross-correlation (coarse and fine) as a function of pixel-shift.

ESO	VISIR Pipeline User Manual	Doc:	VLT-MAN-ESO-19500-3852
		Issue:	Issue 1.2
		Date:	Date 21st January 2008
		Page:	63 of 77

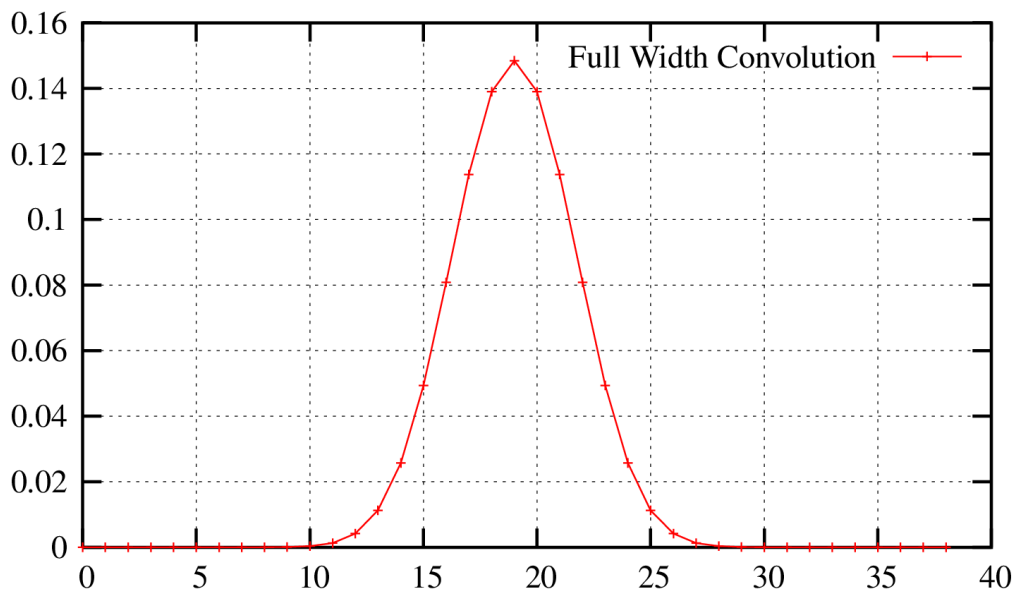


Figure 10.1.4: The symmetric convolution profile used to smooth the model spectrum. The area under the profile is 1. The instrument settings for this example is $\lambda_{central} = 12.818\mu m$ in High Resolution Long Slit mode, with $w_{slit} = 5.9\text{pixel}$ and $w_{FWHM} = 5.25\text{pixel}$.

ESO	VISIR Pipeline User Manual	Doc:	VLT-MAN-ESO-19500-3852
		Issue:	Issue 1.2
		Date:	Date 21st January 2008
		Page:	64 of 77

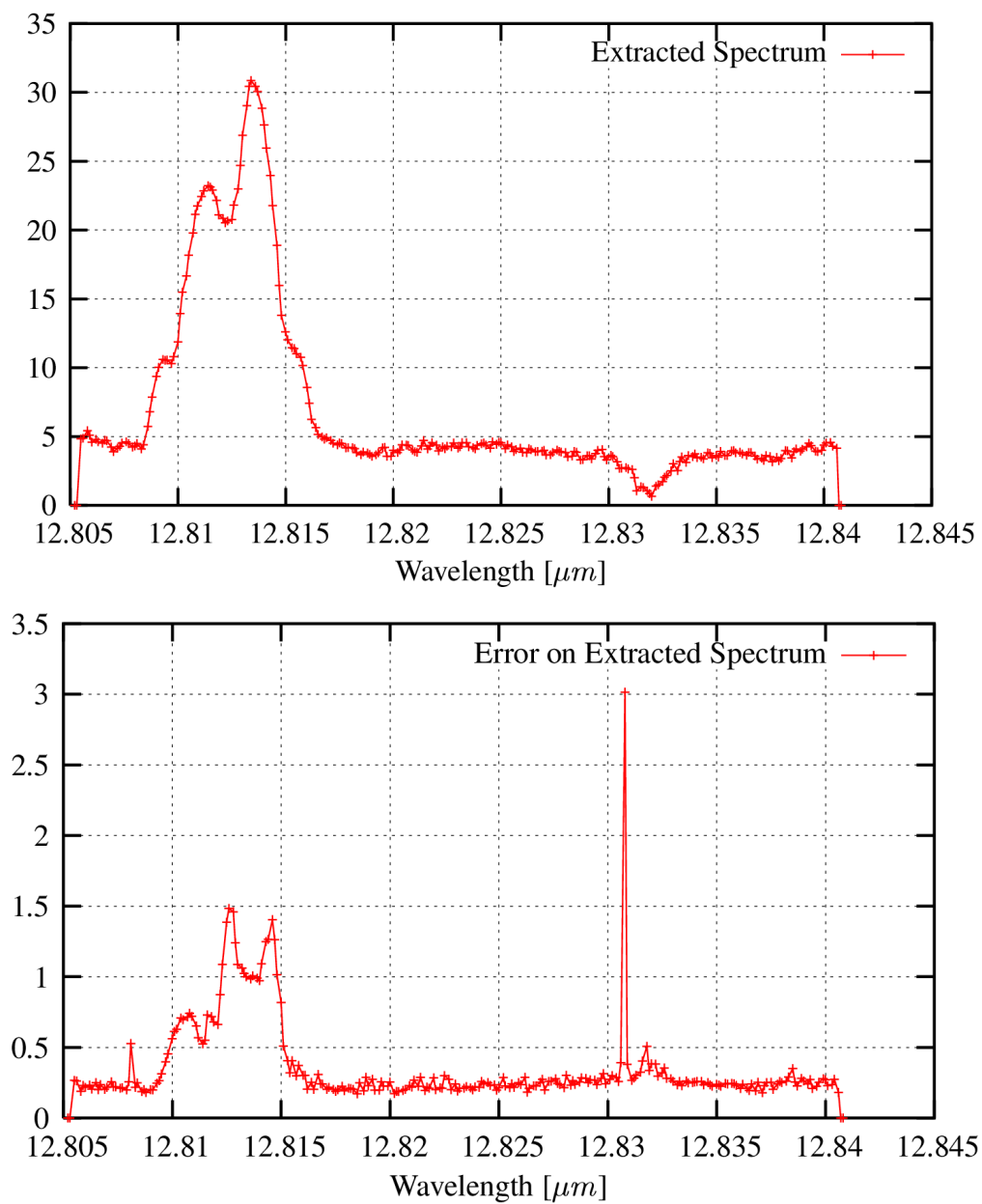


Figure 10.1.5: Example of an extracted spectrum and its error.

ESO	VISIR Pipeline User Manual	Doc:	VLT-MAN-ESO-19500-3852
		Issue:	Issue 1.2
		Date:	Date 21st January 2008
		Page:	65 of 77

A Installation

This chapter gives generic instructions on how to obtain, build and install the VISIR pipeline version 3.0.0. Even if this chapter is kept as up-to-date as much as possible, it may not be fully applicable to future releases. For instructions on installation of future releases, the reader is therefore advised to check the installation instructions delivered with such future releases. The supported platforms are listed in Section A.1. It is recommended reading through Section A.2.2 before starting the installation.

A bundled version of the VISIR pipeline with all the required tools and an installer script is available from <http://www.eso.org/pipelines>, for users who are not familiar with the installation of software packages.

A.1 Supported platforms

The VISIR pipeline version 3.0.0 is verified and supported on the VLT target platforms:

- Scientific Linux 4.3 (Athlon), using gcc v. 3.3.4
- Linux Red Hat 9 (P4), using gcc v. 3.2.2
- Sun Solaris 8 (SPARC), using gcc 3.3.

The usage of the GNU build tools should allow to build and run the VISIR pipeline on a variety of platforms. As such, the VISIR pipeline version 3.0.0 is known to build and to produce correct output with esorex on these platforms:

- Scientific Linux 4.0 (Athlon), using gcc v. 3.3.4
- Linux Ubuntu 6.10 (AMD64), using gcc v. 4.1.2
- Linux XUbuntu 6.10 (P4 Mobile, 128MB RAM), using gcc v. 4.1.2
- Linux Fedora Core 6 (P4), using gcc v. 4.1.1
- Linux SuSE 10.2 (AMD64), using gcc v. 4.1.2
- Linux Mandrake 9.0 (P3), using gcc v. 3.2
- Linux Mandrake 8.0 (P3), using gcc v. 2.96
- Mac OS X 10.4.4 (G4), using gcc 3.3

A.2 Building the VISIR pipeline

This section shows how to obtain, build and install the VISIR pipeline from the official source distribution.

ESO	VISIR Pipeline User Manual	Doc:	VLT-MAN-ESO-19500-3852
		Issue:	Issue 1.2
		Date:	Date 21st January 2008
		Page:	66 of 77

A.2.1 Requirements

To compile and install the VISIR pipeline one needs:

- one of the C compilers listed above,
- a version of the `tar` file-archiving program,
- the GNU software: `gzip`, `perl`, `make`.

On the above mentioned systems a Java Development Kit (JDK) version 1.5.0 will additionally allow the usage of Gasgano (part of this distribution).

A.2.2 Compiling and installing the VISIR pipeline

The VISIR pipeline distribution kit 3.0.0 contains:

visir-manual-1.2.pdf
install_pipeline
cfitsio2510.tar.gz
cpl-4.0.1.tar.gz
esorex-3.6.5.tar.gz
gasgano-2.2.7.tar.gz
visir-3.0.0.tar.gz
visir-calib-3.0.0.tar.gz

The VISIR pipeline manual
Install script
CFITSIO 2.510
CPL 4.0.1
esorex 3.6.5
GASGANO 2.2.7
VISIR 3.0.0
VISIR calibration files 3.0.0

Here is a description of the installation procedure:

1. Change directory to where you want to retrieve the VISIR pipeline recipes 3.0.0 package. It can be any directory of your choice but not:

```
$HOME/gasgano
$HOME/.esorex
```

2. Download from the ESO ftp server, <http://www.eso.org/pipelines>, the latest release of the VISIR pipeline distribution.

3. Unpack using the following command:

```
gzip -dc visir-kit-3.0.0.tar.gz | tar xf -
```

4. Install: after moving to the top installation directory,

```
cd visir-kit-3.0.0
```

ESO	VISIR Pipeline User Manual	Doc:	VLT-MAN-ESO-19500-3852
		Issue:	Issue 1.2
		Date:	Date 21st January 2008
		Page:	67 of 77

it is possible to perform a default installation using the available installer script (*recommended*):

```
./install_pipeline
```

(beware: the execution may take a few minutes on Linux and several minutes on SunOS).

By default the script will install the VISIR recipes, *Gasgano*, *EsoRex*, all the necessary libraries, and the static calibration tables, into a directory tree rooted at \$HOME. A different path may be specified as soon as the script is run.

The only exception to all this is the *Gasgano* tool, that will always be installed under the directory \$HOME/gasgano. Note that the installer will move an existing \$HOME/gasgano directory to \$HOME/gasgano.old before the new *Gasgano* version is installed.

Important: the installation script would ensure that any existing *Gasgano* and *EsoRex* setup would be inherited into the newly installed configuration files (avoiding in this way any conflict with other installed instrument pipelines).

Alternatively, it is possible to perform a manual installation (*experienced users only*): the README file located in the top installation directory contains more detailed information about a step-by-step installation.

ESO	VISIR Pipeline User Manual	Doc:	VLT-MAN-ESO-19500-3852
		Issue:	Issue 1.2
		Date:	Date 21st January 2008
		Page:	68 of 77

B QC Parameters

This appendix describes the QC Parameters created by the VISIR pipeline:

Parameter Name:	QC BACKGD MEAN
Class:	header qc-log
Context:	process
Type:	double
Value Format:	%e
Unit:	ADU
Comment Field:	Background level from Half-Cycle frames.
Description:	Background level from Half-Cycle frames. This number does not include the offset correction.
Parameter Name:	QC BACKGD SIGMA
Class:	header qc-log
Context:	process
Type:	double
Value Format:	%e
Unit:	ADU
Comment Field:	Background noise.
Description:	Background noise determined with 5 iterations of sigma=3 clipping.
Parameter Name:	QC CAPA
Class:	header qc-log
Context:	process
Type:	string
Value Format:	%s
Unit:	
Comment Field:	The pixel capacity (large, small or problem)
Description:	The pixel capacity (large, small or problem) based on DET VOLT1 DCTA9 and DET VOLT1 DCTB9 (in imaging) DET VOLT2 DCTA9 and DET VOLT2 DCTB9 (in spectroscopy). If the mean of DCTA9 and DCTB9 is less than 1: small If the mean of DCTA9 and DCTB9 exceeds 4.5: large, otherwise problem.
Parameter Name:	QC CONVER
Class:	header qc-log
Context:	process
Type:	double
Value Format:	%e
Unit:	ADU/Jy

ESO	VISIR Pipeline User Manual	Doc:	VLT-MAN-ESO-19500-3852
		Issue:	Issue 1.2
		Date:	Date 21st January 2008
		Page:	69 of 77

Comment Field: The conversion factor in imaging
Description: The conversion factor in imaging

Parameter Name: QC DARKMED
Class: header|qc-log
Context: process
Type: double
Value Format: %f
Unit: ADU
Comment Field: Dark current
Description: Median of the dark produced image

Parameter Name: QC EXPTIME
Class: header|qc-log
Context: process
Type: double
Value Format: %e
Unit: seconds
Comment Field: Exposure time
Description: Exposure time

Parameter Name: QC FILTER
Class: header|qc-log
Context: process
Type: string
Value Format: %20s
Unit:
Comment Field: The filter used to observe the star.
Description: The filter used to observe the star.

Parameter Name: QC FLUXSNR
Class: header|qc-log
Context: process
Type: double
Value Format: %e
Unit: ADU
Comment Field: Star flux obtained for the best SNR ratio.
Description: Star flux obtained for the best SNR ratio.

Parameter Name: QC FLUXSNR NOISE
Class: header|qc-log
Context: process
Type: double
Value Format: %e

ESO	VISIR Pipeline User Manual	Doc:	VLT-MAN-ESO-19500-3852
		Issue:	Issue 1.2
		Date:	Date 21st January 2008
		Page:	70 of 77

Unit: ADU
Comment Field: Noise obtained for the best SNR ratio.
Description: Noise obtained for the best SNR ratio.

Parameter Name: QC FLUXTOT
Class: header|qc-log
Context: process
Type: double
Value Format: %e
Unit: ADU
Comment Field: Total flux of the star.
Description: Total flux of the star.

Parameter Name: QC FPNOISE
Class: header|qc-log
Context: process
Type: double
Value Format: %f
Unit: ADU
Comment Field: Fixed Pattern Noise
Description: Largest noise component in raw images

Parameter Name: QC FWHMX NEG1
Class: header|qc-log
Context: process
Type: double
Value Format: %e
Unit: pixels
Comment Field: FWHM in x of the first negative star
Description: The Full Width at Half Maximum in x of the first negative star

Parameter Name: QC FWHMX NEG2
Class: header|qc-log
Context: process
Type: double
Value Format: %e
Unit: pixels
Comment Field: FWHM in x of the second negative star
Description: The Full Width at Half Maximum in x of the second negative star

Parameter Name: QC FWHMX POS1
Class: header|qc-log

ESO	VISIR Pipeline User Manual	Doc:	VLT-MAN-ESO-19500-3852
		Issue:	Issue 1.2
		Date:	Date 21st January 2008
		Page:	71 of 77

Context: process
 Type: double
 Value Format: %e
 Unit: pixels
 Comment Field: FWHM in x of the first positive star
 Description: The Full Width at Half Maximum in x of the first positive star

Parameter Name: QC FWHMX POS2
 Class: header|qc-log
 Context: process
 Type: double
 Value Format: %e
 Unit: pixels
 Comment Field: FWHM in x of the second positive star
 Description: The Full Width at Half Maximum in x of the second positive star

Parameter Name: QC FWHMY NEG1
 Class: header|qc-log
 Context: process
 Type: double
 Value Format: %e
 Unit: pixels
 Comment Field: FWHM in y of the first negative star
 Description: The Full Width at Half Maximum in y of the first negative star

Parameter Name: QC FWHMY NEG2
 Class: header|qc-log
 Context: process
 Type: double
 Value Format: %e
 Unit: pixels
 Comment Field: FWHM in y of the second negative star
 Description: The Full Width at Half Maximum in y of the second negative star

Parameter Name: QC FWHMY POS1
 Class: header|qc-log
 Context: process
 Type: double
 Value Format: %e
 Unit: pixels

ESO	VISIR Pipeline User Manual	Doc:	VLT-MAN-ESO-19500-3852
		Issue:	Issue 1.2
		Date:	Date 21st January 2008
		Page:	72 of 77

Comment Field: FWHM in y of the first positive star
Description: The Full Width at Half Maximum in y of the first positive star

Parameter Name: QC FWHMY POS2
Class: header|qc-log
Context: process
Type: double
Value Format: %e
Unit: pixels
Comment Field: FWHM in y of the second positive star
Description: The Full Width at Half Maximum in y of the second positive star

Parameter Name: QC JYVAL
Class: header|qc-log
Context: process
Type: double
Value Format: %e
Unit: Jansky
Comment Field: Jansky value for a given star in a given band from a catalog.
Description: Jansky value for a given star in a given band from a catalog.

Parameter Name: QC LAMPFLUX
Class: header|qc-log
Context: process
Type: double
Value Format: %e
Unit: ADU/s
Comment Field: The median flux of the first lampflat difference per DIT.
Description: The median flux of the difference between the first two lampflats using the central part of the detector, divided by the DIT. Used to monitor the lamp evolution.

Parameter Name: QC NBBADPIX
Class: header|qc-log
Context: process
Type: integer
Value Format: %d
Unit: pixels
Comment Field: Number of bad pixels.
Description: Number of bad pixels.

ESO	VISIR Pipeline User Manual	Doc:	VLT-MAN-ESO-19500-3852
		Issue:	Issue 1.2
		Date:	Date 21st January 2008
		Page:	73 of 77

Parameter Name: QC NBCOLPIX
 Class: header|qc-log
 Context: process
 Type: integer
 Value Format: %d
 Unit: nb of pixels
 Comment Field: Number of cold pixels
 Description: Number of cold pixels

Parameter Name: QC NBDEVPIX
 Class: header|qc-log
 Context: process
 Type: integer
 Value Format: %d
 Unit: nb of pixels
 Comment Field: Number of deviant pixels
 Description: Number of deviant pixels

Parameter Name: QC NBHOTPIX
 Class: header|qc-log
 Context: process
 Type: integer
 Value Format: %d
 Unit: nb of pixels
 Comment Field: Number of hot pixels
 Description: Number of hot pixels

Parameter Name: QC PHDEGREE
 Class: header|qc-log
 Context: process
 Type: integer
 Value Format: %d
 Unit:
 Comment Field: The degree of the model dispersion polynomial
 Description: The degree of the dispersion polynomial from the physical model. It is currently 1.

Parameter Name: QC PHDISPX0
 Class: header|qc-log
 Context: process
 Type: double
 Value Format: %e
 Unit: meter
 Comment Field: wavelength = PHDISPX0 + i * PHDISPX1, i=1,2,...

ESO	VISIR Pipeline User Manual	Doc:	VLT-MAN-ESO-19500-3852
		Issue:	Issue 1.2
		Date:	Date 21st January 2008
		Page:	74 of 77

Description: The constant term of the dispersion polynomial from the physical model, $\text{wavelength} = f(\text{pixel})$.

Parameter Name: QC PHDISPX1
Class: header|qc-log
Context: process
Type: double
Value Format: %e
Unit: meter/pixel
Comment Field: $\text{wavelength} = \text{PHDISPX0} + i * \text{PHDISPX1}$, $i=1,2,\dots$
Description: The linear term of the dispersion polynomial from the physical model, $\text{wavelength} = f(\text{pixel})$.

Parameter Name: QC RONi
Class: header|qc-log
Context: process
Type: double
Value Format: %f
Unit: ADU
Comment Field: Read-out noise of the i th pair of the set
Description: Measured read-out noise on the whole array.

Parameter Name: QC SENSIT
Class: header|qc-log
Context: process
Type: double
Value Format: %e
Unit: mJy/10sigma/1hour
Comment Field: The sensitivity in imaging
Description: The sensitivity in imaging

Parameter Name: QC SENS MEAN
Class: header|qc-log
Context: process
Type: double
Value Format: %e
Unit: mJy
Comment Field: Mean of the spectroscopic sensitivities
Description: Mean of the spectroscopic sensitivities over the whole spectral range

Parameter Name: QC SENS STDEV
Class: header|qc-log
Context: process

ESO	VISIR Pipeline User Manual	Doc:	VLT-MAN-ESO-19500-3852
		Issue:	Issue 1.2
		Date:	Date 21st January 2008
		Page:	75 of 77

Type: double
 Value Format: %e
 Unit: mJy
 Comment Field: Standard deviation of the spectroscopic sensitivities
 Description: Standard deviation of the spectroscopic sensitivities over the whole spectral range

Parameter Name: QC STARNAME
 Class: header|qc-log
 Context: process
 Type: string
 Value Format: %30s
 Unit:
 Comment Field: Standard star name
 Description: Standard star name

Parameter Name: QC STREHL
 Class: header|qc-log
 Context: process
 Type: double
 Value Format: %e
 Unit:
 Comment Field: The strehl ratio
 Description: The strehl ratio

Parameter Name: QC STREHL ERROR
 Class: header|qc-log
 Context: process
 Type: double
 Value Format: %e
 Unit:
 Comment Field: The error bound on the strehl ratio
 Description: The error bound on the strehl ratio

Parameter Name: QC XC
 Class: header|qc-log
 Context: process
 Type: double
 Value Format: %e
 Unit:
 Comment Field: The cross-correlation, ranging from 0 to 1.
 Description: The cross-correlation between the observed sky spectrum and a model spectrum that has been shifted such that it has maximal cross-correlation with the observed sky spectrum. Range from 0 to 1.

ESO	VISIR Pipeline User Manual	Doc:	VLT-MAN-ESO-19500-3852
		Issue:	Issue 1.2
		Date:	Date 21st January 2008
		Page:	76 of 77

Parameter Name: QC XCDEGREE
 Class: header|qc-log
 Context: process
 Type: integer
 Value Format: %d
 Unit:
 Comment Field: The degree of the calibration dispersion polynomial
 Description: The degree of the dispersion polynomial from the cross-correlation. It is currently 1.

Parameter Name: QC XCDISPX0
 Class: header|qc-log
 Context: process
 Type: double
 Value Format: %e
 Unit: meter
 Comment Field: wavelength = XCDISPX0 + i * XCDISPX1, i=1,2,...
 Description: The constant term of the dispersion polynomial from the cross-correlation, wavelength = f(pixel).

Parameter Name: QC XCDISPX1
 Class: header|qc-log
 Context: process
 Type: double
 Value Format: %e
 Unit: meter/pixel
 Comment Field: wavelength = XCDISPX0 + i * XCDISPX1, i=1,2,...
 Description: The linear term of the dispersion polynomial from the cross-correlation, wavelength = f(pixel). It is currently equal to PHDISPX1.

Parameter Name: QC XCENROI
 Class: header|qc-log
 Context: process
 Type: double
 Value Format: %e
 Unit: pixel
 Comment Field: The x-centroid of the spectrums brightest object
 Description: The location (centroid) in the field-direction of the brightest object of the spectrum

Parameter Name: QC XCSHIFT
 Class: header|qc-log
 Context: process

ESO	VISIR Pipeline User Manual	Doc:	VLT-MAN-ESO-19500-3852
		Issue:	Issue 1.2
		Date:	Date 21st January 2008
		Page:	77 of 77

Type: double
 Value Format: %e
 Unit: pixel
 Comment Field: The shift in pixels of the model spectrum
 Description: The shift in pixels of the model spectrum that maximizes the cross-correlation between the observed sky spectrum and the model spectrum. A positive number means that the FITS- headers WLEN is too large. The range is bound by the detector size, -256 to 256

Parameter Name: QC XCWLEN
 Class: header|qc-log
 Context: process
 Type: double
 Value Format: %e
 Unit: meter
 Comment Field: The calibrated Central Wavelength
 Description: The actual Central Wavelength (at pixel 128.5) as determined by the wavelength calibration.

Parameter Name: QC XFWHM
 Class: header|qc-log
 Context: process
 Type: double
 Value Format: %e
 Unit: pixel
 Comment Field: The Full Width at Half Maximum of the object at XCENTROI
 Description: The Full Width at Half Maximum of the brightest object of the spectrum, located at XCENTROI